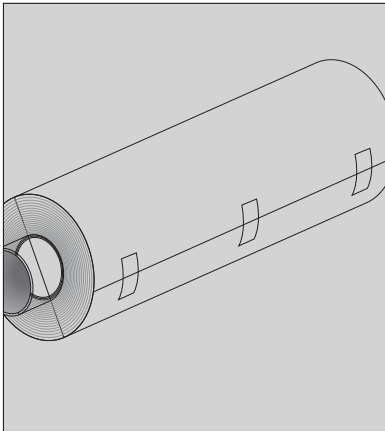
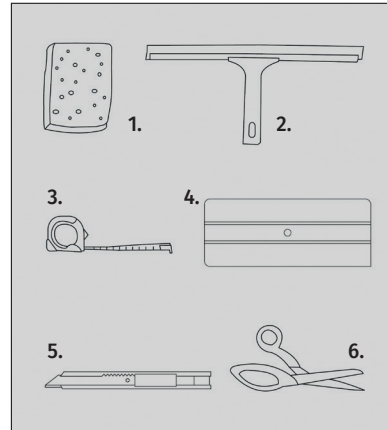


A totally new and easy way
to dress up your window

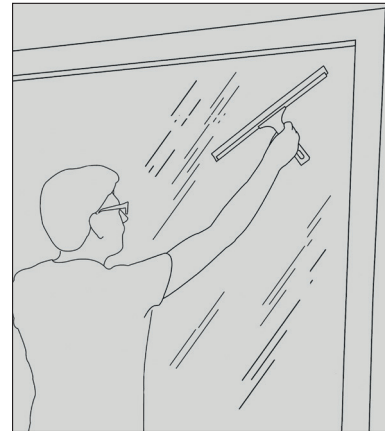
WARNING: please read carefully



Keep Decorative Textile Film tightly wrapped around its carton core until the moment of installation. It must be firmly attached with 3 adhesive tapes evenly spread over the width of the roll, in the center, left end and right end.



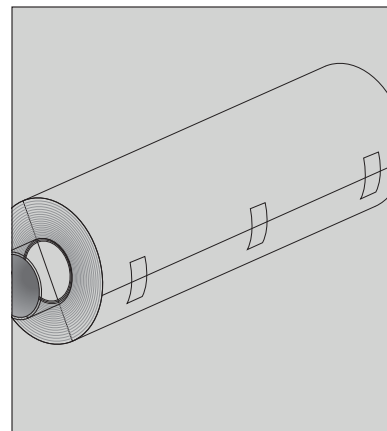
Tools: window cleaning tools (1-2), measuring tape (3), plastic squeegee (4), cutter with stainless steel spare blades (5), scissors (6).



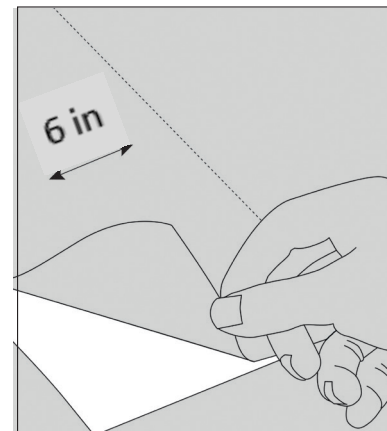
Clean and degrease the window thoroughly with water and a dash of ammoniac or alcohol. Dry the window thoroughly with a lint-free cloth.



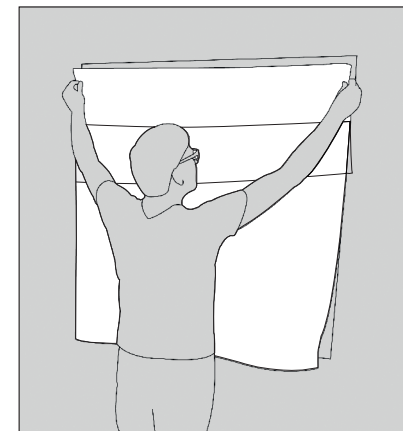
Measure the width and the height of the window. Add 2" to width and height for overlap



After cutting a piece of Decorative Textile Film, always make sure to wrap the remaining Fabric tightly around its carton core and fix it firmly with 3 adhesive tapes evenly spread over the width of the roll. If textile Film is not kept tightly enough around the core, this might create permanent bubbles or creases in the fabric.



Pull out the backing paper behind Decorative Textile Film on ± 6 in and fold it.



Align the Decorative Textile Film with the top of the window and press the textile gently onto the glass. Take out the remaining backing paper little by little, by section of ± 6 in each, while pressing gently the fabric onto the window from top to bottom and from the middle to the side.

WARNING: please read carefully

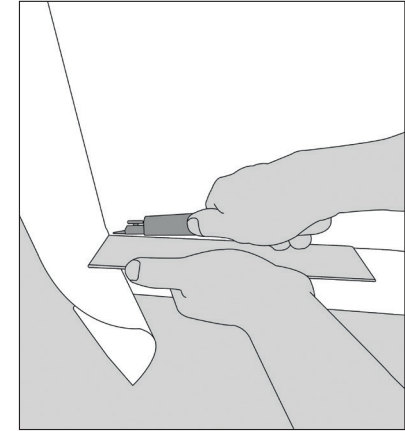
In case of bubble or crease, detach gently the fabric from the window, without applying tension, up to the level beyond the bubble or crease (A).



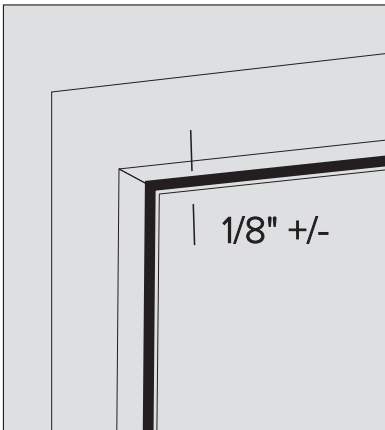
Then let it fall again smoothly onto the window, while accompanying it with your hand or with the squeegee. Never try to push out bubbles or creases by pressing with the squeegee because this would cause permanent deformations in the fabric.



When Decorative Textile Film is perfectly flat on the window, use the squeegee to adhere it well to the glass. Press from the center outwards (see arrows). Press over the entire surface well, including the edges and the corners.



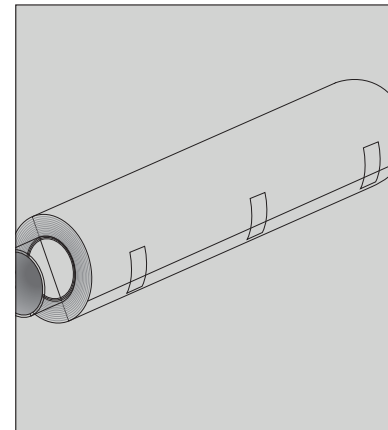
Place the squeegee next to the window silicon joint, with the cutter on the inside. Carefully cut to remove the excess, with a regular movement using strong pressure and a sharp angle. Use a new blade every 78 in and for every corner, in order to avoid tearing the yarn.



For best results, it is recommended to leave a 1/8 in. gap between the silicon joint and Decorative Textile Film



Apply a strong pressure with the squeegee over the whole Decorative textile Film surface, horizontally and vertically, in order to activate the glue. This is very important to avoid the formation of bubbles in Decorative Textile Film



If you have some Decorative Textile Film left over, keep it in its original packaging, tightly wrapped around its carton core, and firmly fixed with 3 adhesive tapes evenly spread over the width of the roll, that is in the center, left end and right end.



Enjoy your Decorative Textile Film