

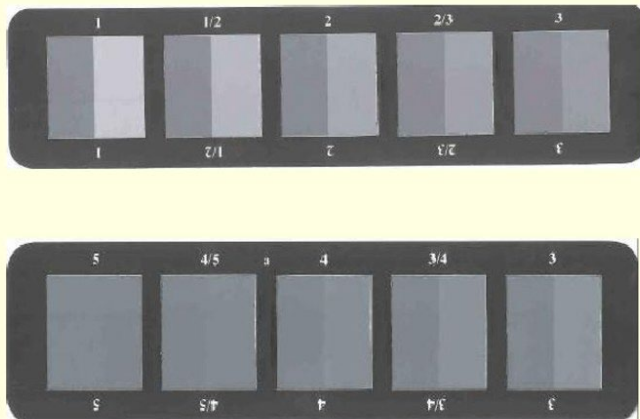
Lightfastness and Colorfastness

You may have heard the terms “lightfastness” or “colorfastness to light” when shopping for the perfect outdoor fabric. Maybe you have seen a lightfastness rating or a particular number of light hours listed on a fabric's specs, but maybe you didn't know what they meant or fully understood their significance. Lightfastness or Colorfastness to light is, “the degree to which a dye resists fading due to constant light exposure. Although this may be particularly important when shopping for fabric that will be used in a sunroom or outdoors, it is important to note that all dyes have some susceptibility to light damage. Problems with fading tend to occur when the fabric chosen was not produced to meet the end use, like using a basic multipurpose cotton print on patio furniture.

Most fabric manufacturers complete UV tests that provide consumers with a rating that directly correlates with the fabric's ability to resist fading or its lightfastness. The most commonly used method in the United States is the American Standard AATCC 169.3. With this test the fabric is exposed under specific conditions to a controlled light source which simulates the sun spectrum of Albuquerque, New Mexico. At timed intervals, the test swatch is compared visually to a gray scale and the degree of fading is rated on a scale from 1 to 8.

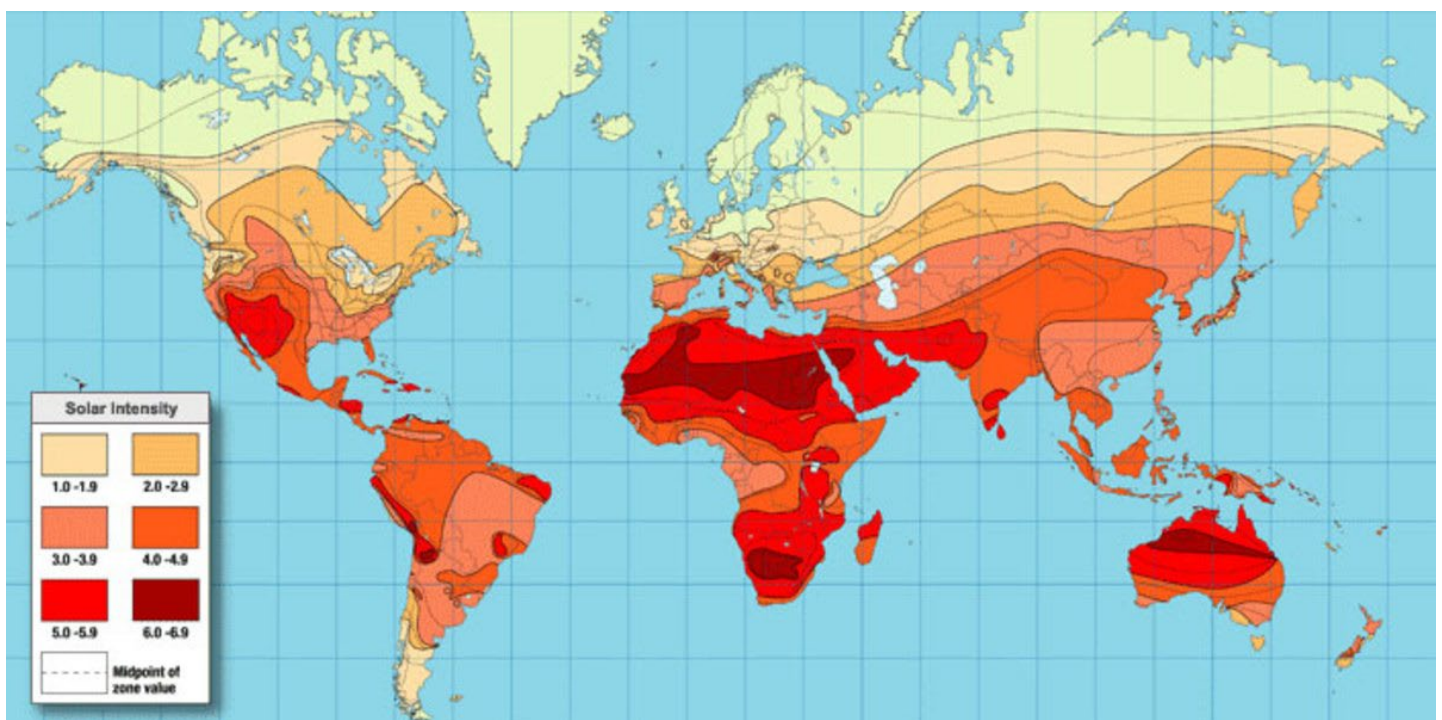
Grade	Degree of Fading	Light Fastness Type
8	No fading	Outstanding
7	Very slight fading	Excellent (over 100 years)
6	Slight fading	Very good (50-100 years)
5	Moderate fading	Good (25-50 years)
4	Appreciable fading	Moderate (25-50 years)
3	Significant fading	Fair (15-50 years)
2	Extensive fading	Poor (2-15 years)
1	Very extensive fading	Very poor (less than 2 years)

Grey Scales For Coloring



AATCC 169.3 American Standard Test

Manufacturers may also provide a lightfastness in number of sunlight hours. Any number of hours could be given, but outdoor fabrics usually rate anywhere from 500-2000+. The exact number of hours or years a fabric will last without fading is impossible to determine as there are many factors that come into play, such as the type of dye used, fiber content of the fabric, sun intensity and geographical location. Take a moment to consider the difference of the sun's intensity in New York compared to that of New Mexico. Other factors that may affect lightfastness include temperature, humidity, and airflow.



Global Solar Intensity Potential

Keep in mind that we are affected by the sun's UV rays all year round and even on overcast days. The sunlight that shines into our rooms in both summer and winter can cause color fading. Line draperies with protective lining, consider the harshness of the sun's light through your windows, the number of hours of direct sunlight, and whether or not your fabric will be protected by the shade when selecting your fabric. Remember that ALL fabrics will fade over time.

RM COCO Performance Indoor/Outdoor Products and their ratings.

- Tommy Bahama Home ~ 2,000 Hours
- Bahama Breeze Trimming ~ Grade 7
- Surfside Trimming ~ Grade 4.5

- **Cabana Book:**

Bayside IO ~ Grade 4.5
Beach Blanket IO ~ Grade 4.5
Ebb Tide IO ~ Grade 4.5
Oceanaire IO ~ Grade 4.5
Sand Dune IO ~ Grade 4.5
Seaspray Texture IO ~ Grade 4.5
Thatched Hut IO ~ Grade 4.5
Tidal Pool IO ~ Grade 4.5

- **Veranda Book:**

Bali Hai IO ~ Grade 4.5
Bamboo Garden IO ~ 500 Hours
Bar Harbour IO ~ 500 Hours
Beach Club IO ~ 2,000 Hours
Beach Party Stripe IO ~ 800 Hours
Boardwalk Stripe IO ~ 2,000 Hours
Cabo IO ~ Grade 4.5
Coral Garden IO ~ 1,500 Hours
Del Mar IO ~ 1,500 Hours
Festiva IO ~ 800 Hours
Fish Tale IO ~ 2,000 Hours
Hanako IO ~ 1,500 Hours
Ipanema IO ~ 800 Hours
Kahala Trellis IO ~ Grade 4.5
Kahuna Stripe IO ~ 2,000 Hours
Kapiolani Gardens IO ~ 2,000 Hours
Kelp Stripe IO ~ 2,000 Hours
Kokomo Stripe IO ~ 800 Hours
Majorca IO ~ 500 Hours
Mykonos IO ~ 800 Hours
Na Pali Garden IO ~ 500 Hours

Nassau Trellis IO ~ 800 Hours
Nautical Stripe IO ~ Grade 4.5
Never Fret IO ~ Grade 4.5
Ocean Trellis IO ~ Grade 4.5
Pago Pago IO ~ 800 Hours
Palm Harbor IO ~ 2,000 Hours
Papillon IO ~ 1,500 Hours
Pismo Beach IO ~ 500 Hours
Poipu Plaid IO ~ 2,000 Hours
Puerto Vallarta IO ~ 2,000 Hours
Saipan Fret IO ~ 1,500 Hours
Sea Tales IO ~ 2,000 Hours
Sea Treasures IO ~ Grade 4.5
Shoreline Stripe IO ~ 2,000 Hours
Something's Fishy IO ~ 2,000 Hours
Star Dance IO ~ 2,000 Hours
Starbright IO ~ 1,500 Hours
Surfside Stripe IO ~ 600 Hours
Tiny Bubbles IO ~ Grade 4.5
Waimea Fret IO ~ 800 Hours