

CUSTOM PANEL PROGRAM

Suggested Retail Pricing | No Other Discounts Apply | March 2021

			Finished Length to 90"				Finished Length to 124"				Finished Length to 150"			
			1 Width Panel	2 Width Panel	*3 Width Pair Only	*4 Width Pair Only	1 Width Panel	2 Width Panel	*3 Width Pair Only	*4 Width Pair Only	1 Width Panel	2 Width Panel	*3 Width Pair Only	*4 Width Pair Only
Linen Blends & Textures	Barrister	80% Polyester, 20% Linen Herringbone Solid	\$156	\$313	\$469	\$626	\$206	\$412	\$619	\$825	\$294	\$589	\$883	\$1,178
	Bruges	100% Linen Medium Weight Linen	\$189	\$378	\$567	\$757	\$250	\$499	\$749	\$999	\$340	\$681	\$1,021	\$1,361
	Harbor Club	80% Polyester, 20% Linen Slubbed Linen Blend Texture	\$147	\$294	\$440	\$587	\$193	\$387	\$580	\$774	\$279	\$559	\$838	\$1,117
	Harlow	85% Polyester, 15% Linen Casual Linen Blend Texture	\$159	\$318	\$476	\$635	\$209	\$419	\$628	\$838	\$298	\$597	\$895	\$1,193
	Landen	95% Polyester, 5% Linen Casual Linen Blend Texture	\$161	\$322	\$484	\$645	\$213	\$425	\$638	\$851	\$302	\$604	\$906	\$1,208
	Monte Carlo	100% Polyester Casual Linen Blend Texture	\$137	\$274	\$412	\$549	\$181	\$361	\$542	\$723	\$264	\$528	\$792	\$1,056
	Saint Tropez	100% Polyester Faux Linen Solid	\$142	\$284	\$426	\$568	\$187	\$374	\$561	\$748	\$272	\$543	\$815	\$1,087
	Smart Move	100% Polyester Pearlescent Solid Texture	\$155	\$311	\$466	\$622	\$205	\$410	\$615	\$820	\$293	\$586	\$879	\$1,172
	Stonebriar	100% Polyester Casual Textured Solid	\$140	\$279	\$419	\$558	\$184	\$368	\$552	\$735	\$268	\$536	\$804	\$1,072
	Strata	76% Viscose, 24% Linen Vertical Strié Texture	\$192	\$383	\$575	\$767	\$253	\$506	\$759	\$1,013	\$344	\$689	\$1,033	\$1,377
	Sutton	100% Polyester Faux Linen Twill	\$156	\$313	\$469	\$626	\$206	\$412	\$619	\$825	\$294	\$589	\$883	\$1,178
Chenilles, Velvets, & Plush Textures	Ascot	90% Polyester, 10% Nylon Pebbled Textured Chenille	\$152	\$303	\$455	\$606	\$200	\$400	\$600	\$799	\$287	\$574	\$861	\$1,148
	Bronco	100% Polyester Multi Colored Textured Chenille	\$140	\$279	\$419	\$558	\$184	\$368	\$552	\$735	\$268	\$536	\$804	\$1,072
	Cortland	85% Polyester, 15% Rayon Cross Hatched Chenille	\$161	\$322	\$484	\$645	\$213	\$425	\$638	\$851	\$302	\$604	\$906	\$1,208
	Deauville	100% Polyester Multi Purpose Texture	\$204	\$409	\$613	\$818	\$270	\$540	\$811	\$1,081	\$370	\$741	\$1,111	\$1,482
	Durango Suede	100% Polyester Heavyweight Suede	\$156	\$313	\$469	\$626	\$206	\$412	\$619	\$825	\$294	\$589	\$883	\$1,178
	Esquire	100% Polyester Multi Purpose Texture	\$147	\$294	\$440	\$587	\$193	\$387	\$580	\$774	\$279	\$559	\$838	\$1,117
	Maison Royale	100% Polyester Multi Purpose Textured Chenille	\$252	\$505	\$757	\$1,010	\$334	\$668	\$1,003	\$1,337	\$446	\$893	\$1,339	\$1,786
	Penthouse	51% Viscose, 49% Polyester Textured Chenille Solid	\$166	\$332	\$498	\$664	\$219	\$438	\$657	\$876	\$310	\$619	\$929	\$1,239
	Piper	100% Polyester Brushed Solid Texture	\$178	\$356	\$534	\$712	\$235	\$470	\$705	\$940	\$329	\$657	\$986	\$1,315
	Plush	100% Polyester Chenille Textured Solid	\$156	\$313	\$469	\$626	\$206	\$412	\$619	\$825	\$294	\$589	\$883	\$1,178
	Rialto	100% Polyester Strié Faille Chenille	\$152	\$303	\$455	\$606	\$200	\$400	\$600	\$799	\$287	\$574	\$861	\$1,148
	San Moritz	100% Polyester Distressed Chenille Texture	\$192	\$385	\$577	\$770	\$254	\$508	\$763	\$1,017	\$351	\$703	\$1,054	\$1,406
	Soirée	100% Polyester Multi Purpose Performance Velvet	\$319	\$638	\$958	\$1,277	\$423	\$846	\$1,269	\$1,693	\$546	\$1,092	\$1,639	\$2,185
	Villa	100% Polyester Plush Velvet Solid	\$140	\$279	\$419	\$558	\$184	\$368	\$552	\$735	\$268	\$536	\$804	\$1,072
	Well Suited	100% Polyester Two-toned Chenille Texture	\$152	\$303	\$455	\$606	\$200	\$400	\$600	\$799	\$287	\$574	\$861	\$1,148
	Wellington	95% Polyester, 5% Nylon Low Pile Chenille Solid	\$147	\$294	\$440	\$587	\$193	\$387	\$580	\$774	\$279	\$559	\$838	\$1,117
	Westover	100% Polyester Antiqued Chenille Solid	\$178	\$356	\$534	\$712	\$235	\$470	\$705	\$940	\$329	\$657	\$986	\$1,315

CUSTOM PANEL PROGRAM

Suggested Retail Pricing | No Other Discounts Apply | March 2021

			Finished Length to 90"				Finished Length to 124"				Finished Length to 150"				
			1 Width Panel	2 Width Panel	*3 Width Pair Only	*4 Width Pair Only	1 Width Panel	2 Width Panel	*3 Width Pair Only	*4 Width Pair Only	1 Width Panel	2 Width Panel	*3 Width Pair Only	*4 Width Pair Only	
Classic Drapery Fabric	Organic Classics	Chimera	100% Polyester Faux Silk	\$147	\$294	\$440	\$587	\$193	\$387	\$580	\$774	\$279	\$559	\$838	\$1,117
		Contessa	100% Polyester Faux Silk Solid Texture	\$147	\$294	\$440	\$587	\$193	\$387	\$580	\$774	\$279	\$559	\$838	\$1,117
		Crown Moire	57% Cotton 43% Acetate Moire	\$128	\$255	\$383	\$510	\$168	\$336	\$504	\$671	\$249	\$498	\$747	\$996
		Keepsakes	100% Polyester Transitional Drapery Texture	\$137	\$274	\$412	\$549	\$181	\$361	\$542	\$723	\$264	\$528	\$792	\$1,056
		Everest	65% Recycled Polyester 35% Organic Cotton Eco-Twill Solid	\$156	\$313	\$469	\$626	\$206	\$412	\$619	\$825	\$294	\$589	\$883	\$1,178
		Expedition	100% Cotton Organic Cotton Twill	\$156	\$313	\$469	\$626	\$206	\$412	\$619	\$825	\$294	\$589	\$883	\$1,178
		Sailaway	100% Cotton Organic Cotton Duck	\$156	\$313	\$469	\$626	\$206	\$412	\$619	\$825	\$294	\$589	\$883	\$1,178
		Perception	100% Silk Machine Loomed Silk	\$293	\$586	\$880	\$1,173	\$389	\$777	\$1,166	\$1,555	\$511	\$1,022	\$1,533	\$2,044
		Prelude	100% Polyester Transitional Drapery Texture	\$132	\$265	\$397	\$530	\$174	\$348	\$523	\$697	\$256	\$513	\$769	\$1,026
		RM Dupioni	100% Silk Hand Loomed Silk	\$250	\$500	\$750	\$1,000	\$331	\$662	\$993	\$1,324	\$443	\$885	\$1,328	\$1,771
		Trieste Twill	100% Cotton Casual Twill Solid	\$125	\$251	\$376	\$502	\$165	\$329	\$494	\$659	\$239	\$479	\$718	\$957
		Vail Suede	100% Polyester Lightweight Suede	\$140	\$279	\$419	\$558	\$184	\$368	\$552	\$735	\$268	\$536	\$804	\$1,072
Light Control Fabrics	Unlined Twilight Dimmers	Illusion	100% Polyester Unlined Dimmer Drapery Textures	\$158	\$315	\$473	\$631	\$208	\$416	\$624	\$832	\$291	\$583	\$874	\$1,165
		Nightfall	100% Polyester Unlined Dimmer Drapery Textures	\$158	\$315	\$473	\$631	\$208	\$416	\$624	\$832	\$291	\$583	\$874	\$1,165
		Phantom	100% Polyester Unlined Dimmer Drapery Textures	\$158	\$315	\$473	\$631	\$208	\$416	\$624	\$832	\$291	\$583	\$874	\$1,165
		Umbra	100% Polyester Unlined Dimmer Drapery Textures	\$158	\$315	\$473	\$631	\$208	\$416	\$624	\$832	\$291	\$583	\$874	\$1,165
		Sunset	100% Polyester Unlined Dimmer Drapery Textures	\$158	\$315	\$473	\$631	\$208	\$416	\$624	\$832	\$291	\$583	\$874	\$1,165
		Eventide	100% Polyester Unlined Dimmer Drapery Textures	\$158	\$315	\$473	\$631	\$208	\$416	\$624	\$832	\$291	\$583	\$874	\$1,165
		Stardust	100% Polyester Unlined Dimmer Drapery Textures	\$158	\$315	\$473	\$631	\$208	\$416	\$624	\$832	\$291	\$583	\$874	\$1,165
		Vestige	100% Polyester Unlined Dimmer Drapery Textures	\$158	\$315	\$473	\$631	\$208	\$416	\$624	\$832	\$291	\$583	\$874	\$1,165
		Twilight	100% Polyester Unlined Dimmer Drapery Textures	\$134	\$267	\$401	\$535	\$176	\$352	\$528	\$704	\$253	\$507	\$760	\$1,013
	Lined Twilight Dimmers	Illusion	100% Polyester Lined Dimmer Drapery Textures	\$171	\$342	\$512	\$683	\$225	\$451	\$676	\$902	\$317	\$635	\$952	\$1,269
		Nightfall	100% Polyester Lined Dimmer Drapery Textures	\$171	\$342	\$512	\$683	\$225	\$451	\$676	\$902	\$317	\$635	\$952	\$1,269
		Phantom	100% Polyester Lined Dimmer Drapery Textures	\$171	\$342	\$512	\$683	\$225	\$451	\$676	\$902	\$317	\$635	\$952	\$1,269
		Umbra	100% Polyester Lined Dimmer Drapery Textures	\$171	\$342	\$512	\$683	\$225	\$451	\$676	\$902	\$317	\$635	\$952	\$1,269
		Sunset	100% Polyester Lined Dimmer Drapery Textures	\$171	\$342	\$512	\$683	\$225	\$451	\$676	\$902	\$317	\$635	\$952	\$1,269
		Eventide	100% Polyester Lined Dimmer Drapery Textures	\$171	\$342	\$512	\$683	\$225	\$451	\$676	\$902	\$317	\$635	\$952	\$1,269
		Stardust	100% Polyester Lined Dimmer Drapery Textures	\$171	\$342	\$512	\$683	\$225	\$451	\$676	\$902	\$317	\$635	\$952	\$1,269
		Vestige	100% Polyester Lined Dimmer Drapery Textures	\$171	\$342	\$512	\$683	\$225	\$451	\$676	\$902	\$317	\$635	\$952	\$1,269
		Twilight	100% Polyester Lined Dimmer Drapery Textures	\$147	\$294	\$440	\$587	\$193	\$387	\$580	\$774	\$279	\$559	\$838	\$1,117

CUSTOM PANEL PROGRAM

Suggested Retail Pricing | No Other Discounts Apply | March 2021

Additional Options (add to panel price)	Finished Length to 90"				Finished Length to 124"				Finished Length to 150"			
	1 Width Panel	2 Width Panel	*3 Width Pair Only	*4 Width Pair Only	1 Width Panel	2 Width Panel	*3 Width Pair Only	*4 Width Pair Only	1 Width Panel	2 Width Panel	*3 Width Pair Only	*4 Width Pair Only
Grommet Top	\$72	\$144	\$216	\$288	\$72	\$144	\$216	\$288	\$72	\$144	\$216	\$288
Interlining or Blackout Lining	\$44	\$65	\$85	\$106	\$57	\$84	\$112	\$139	\$62	\$95	\$127	\$159

Trim on Leading Edges (add labor per vertical row and cost of trim to panel price)	Length to:	36"	48"	60"	72"	84"	96"	108"	120"	132"	144"	150"
	Labor per vertical row	\$21	\$32	\$37	\$42	\$53	\$58	\$64	\$75	\$86	\$97	\$108
	Yardage required	1.25	1.50	1.75	2.25	2.50	2.75	3.25	3.50	3.75	4.25	4.50

RM COCO trim selections only. Trim top stitched on vertical edge only, no horizontal application or inserted trim.

Trim Options (add labor per vertical row and cost of trim to panel price)	Pattern	Collection	Retail/Yard	Pattern	Collection	Retail/Yard
	BD111	Artisano	\$69.90	BD108	Creative Threads	\$79.90
	BD112	Artisano	\$69.90	BD109	Creative Threads	\$39.90
	BD113	Artisano	\$79.90	BD110	Creative Threads	\$79.90
	BD114	Artisano	\$79.90	BD100	Bahama Breeze	\$49.90
	BD115	Artisano	\$69.90	BD101	Bahama Breeze	\$42.90
	BD116	Artisano	\$79.90	BD102	Bahama Breeze	\$40.90
	BD117	Artisano	\$89.90	BD103	Bahama Breeze	\$24.90
				BD104	Bahama Breeze	\$44.90

Five Pleat Styles Available 2 1/2 x's Fullness



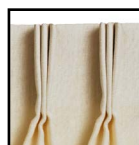
Reverse Pleat



Soft Goblet



Tacked at Top



Three Prong Pleat



Two Prong Pleat**



Shirred
1" heading & 1 1/2" pocket

Pleated or Shirred Features

- 5 pleats per width
- Lined with RM Sateen white or ivory
- Heading-4" turned with crinoline
- Bottom Hem-4" double turned blind stitched
- Side Hem-1 1/2" double turned blind stitched
- Matched thread
- Pin setting up to 1 3/4"
- Cloth covered weights in hem corners
- 1 width pleats to approximately 20"
- ** 2 Prong Pleats have 1 width pleats to approximately 24 inches and has 6 pleats per width

no other discounts apply



Grommet Top Standard Features

- 8 grommets per width
- Lined with RM Sateen white or ivory
- Heading-4" turned with crinoline
- Bottom Hem-4" double turned blind stitched
- Side Hem-1 1/2" double turned blind stitched
- Matched thread
- Cloth covered weights in hem corners

no other discounts apply

Pleated or Shirred Ordering Information Required

- Fabric
- Fabric Color
- Royal Sateen: White or Ivory
- Quantity of Panels or Pairs
- Widths per Panel or Pair
- Finished Length
- Pin Setting
- Pleat Style
- Interlined or Blackout Lined: Add on

Grommet Top Ordering Information Required

- Fabric
- Fabric Color
- Royal Sateen: White or Ivory
- Quantity of Panels or Pairs
- Widths per Panel or Pair
- Finished Length (from top of panel)
- Grommet Size
- Grommet Color
- Interlined or Blackout Lined: Add on

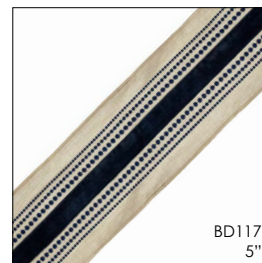
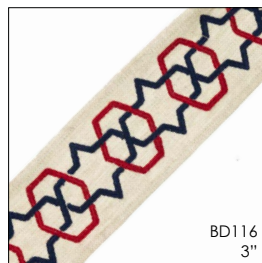
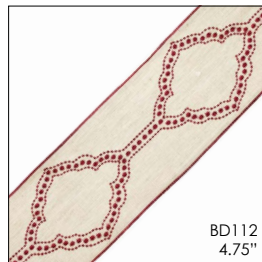
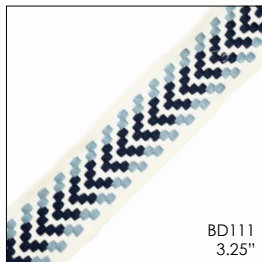
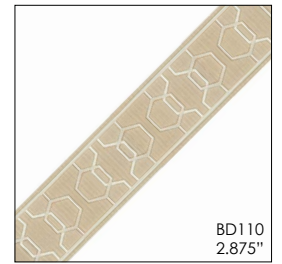
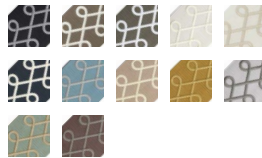
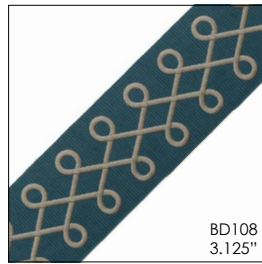
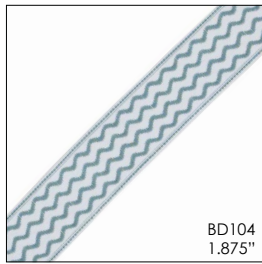
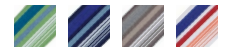
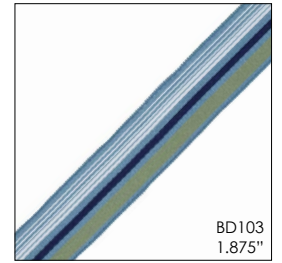
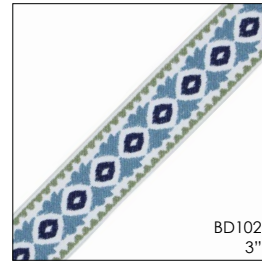
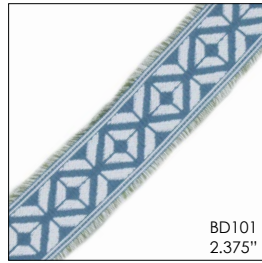
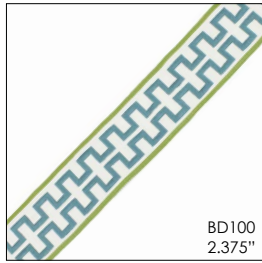
Grommet Sizes

- Inside diameter of opening
- 3/4"
- 1 1/8"
- 1 7/16"
- 1 9/16"

Grommet Colors

- Antique Brass
- Antique Copper
- Brass
- Black
- Matte Nickel
- Nickel
- Oil Rubbed Bronze - 1 9/16" only
- Satin Smoke

ELIGIBLE PANEL PROGRAM TRIM



VIEW OUR ENTIRE
TRIM COLLECTION

TO ORDER:

AVAILABLE ONLINE AT RMCOCO.COM

800.325.8025 OPTION 1 | FAX: 800.501.6810 | EMAIL: CUSTOMCREATIONS@RMCOCO.COM



Custom
Creations

a division of RM CO CO

*Fabrics & Furnishings for Living
Style for Life*



WESCO FABRICS

118" SHEER PROGRAM

Suggested Retail Pricing | No Other Discounts Apply

Gossamer

27 available colors

Per Finished Inch
(rod face + overlap and returns)

\$ 7.46

Royal Batiste

White, Winter White, Marble, Cream

Per Finished Inch
(rod face + overlap and returns)

\$ 3.70

Value Voile

White, Winter White, Marble, Cream

Per Finished Inch
(rod face + overlap and returns)

\$ 3.70

Beaded Weight

(add to per inch price)

Per Finished Inch
(rod face + overlap and returns)

\$ 0.30

Bottom Heading & Rod Pocket

(add to per inch price)

Per Finished Inch

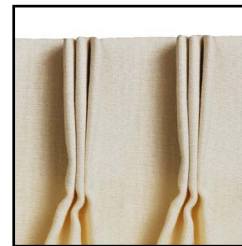
\$ 0.30

Pinch Pleated or Shirred
3 x Fullness



Shirred

*Panels in shirred style have
1" heading and 1 1/2" pocket*



Three Prong Pleat

118" Sheer Ordering Information Required

- Fabric: Batiste or Voile
- Fabric Color
- Quantity of Panels or Pairs
- Widths per Panel or Pair
- Finished Length
- Pin Setting
- Pleat or Shirred Style
- Options: Add on

118 " Sheer Standard Features

- 3 x fullness
- Unlined
- Max finished length 99"
- Max finished width 180"
- Heading-4" turned with crinoline
- Bottom Hem-4" double turned blind stitched
- Side Hem-1 1/2" double turned blind stitched
- Matching thread
- Pin setting up to 1 3/4"
- Cloth covered weights in hem corners

no other discounts apply

TO ORDER:

AVAILABLE ONLINE AT RMCOCO.COM

800.325.8025 OPTION 1 | FAX: 800.501.6810 | EMAIL: CUSTOMCREATIONS@RMCOCO.COM

FAUX FUR PROGRAM

Suggest Retail Pricing | No Other Discounts Apply

PILLOWS - Front and back of pillows are fabricated with selected fur

14" X 20" - \$104.90

18" X 18" - \$129.90

24" X 24" - \$139.90

30" X 30" - \$249.90

BED RUNNER - Runner fits double, queen, and king size beds (drop varies on each) and is fabricated with railroaded fur on both sides.

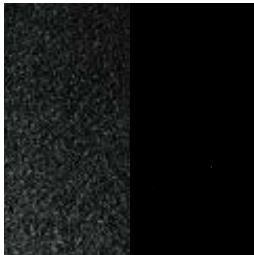
24.5" X 88" - \$341.90

FULL THROW - Throw will be backed with Villa velvet in coordinating color featured below.

50" X 60" - \$300.90

LAP THROW - Throw will be backed with Villa velvet in coordinating color featured below.

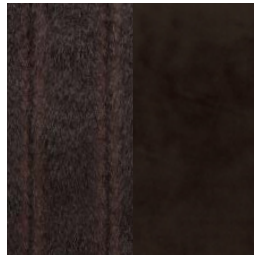
50" X 36" - \$199.90



66SR S68 | BLACK



67SR S1 | TAN



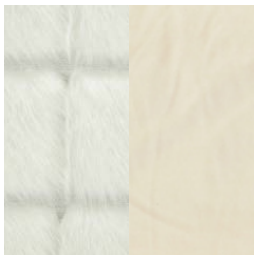
68SR S181 | BROWN



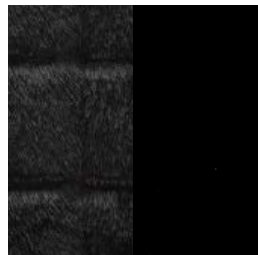
70SR S68 | ASH



69SR S2 | ESPRESSO



71SR S8 | IVORY



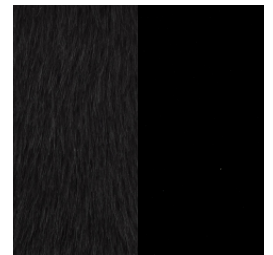
71SR S68 | BLACK



71SR S99 | BEIGE



72SR S15 | IVORY



72SR S68 | BLACK

TO ORDER:

AVAILABLE ONLINE AT RMCOCO.COM

800.325.8025 OPTION 1 | FAX: 800.501.6810 | EMAIL: CUSTOMCREATIONS@RMCOCO.COM