

RM COCO™

RETAIL PRICE LIST

Effective July 1, 2026



RM COCO™ FABRICS | COLORWORKS™ | WESCO FABRICS | TRIMMING | LINING



OUR MISSION is to provide the highest level of customer care, with extraordinary emphasis on quality products, ethics, integrity, and teamwork.

Contents

RM COCO Fabric.....5-31
 Wesco Fabric.....32-38
 Trimming.....39-41
 Lining.....42
 ColorWorks™.....43
 Hardware.....44-45
 Finishing Services.....46-47
 Panel Program.....48-52
 10DayQuickShip.....53-54
 Sheer by the Inch.....55



How to order

Toll Free: 800.325.8025

Customer Service ext. 2
Customer Creations ext. 1
Monday - Friday 8:00 am CST - 5:00 pm CST

Toll Free Fax: 800.501.6810

Email: customerservice@rmcoco.com

Online: www.rmcoco.com

Automated Phone:

- Press 1:** Custom Creations to place order or check on workroom order
- Press 2:** RM COCO Customer Service to place or check order in fabric, trim, or lining
- Press 3:** RM COCO Customer Service to place or check hardware order
- Press 4:** Account Relations
- Press 5:** Leave a message for your RM COCO sales representative
- Press *:** Directory



Accepting RM COCO Fabrics and C.O.M residential, business, and contract.
Call 800.325.8025 ext. 1 for more information

Terms and Conditions of Sale

General Information

Hours of Operation - Customer Service and Custom Creations Customer Service will be here to service your account from 8:00am CST to 5:00pm CST.

Prices - This price list is in effect as of the date stated on the cover, and while we endeavor to maintain quoted prices, these prices are subject to change without notice. Refer to rmcoco.com for the most current prices.

Payment Terms – Credit Card is our standard account payment terms and we accept Mastercard, VISA, Discover and American Express. Open account terms may be applied for with a credit application. Open accounts require full payment on or before 30 days from your invoice date. Prevailing interest rates will be charged on all past due accounts. Current orders will be held and reviewed on accounts with unpaid invoices exceeding 30 days. Until open accounts are established, you may inquire about being set up on a C.O.D. basis. Should you prefer to prepay your order, please contact us in advance so we may calculate freight charges and advise you of the total due. Electronic checks are also accepted for a \$5.00 processing fee.

Deposits - Special orders, large orders, slow moving items, and/or older items (even for active stocked items) may require a non-cancellation purchase order and deposit as well as a minimum order quantity.

Shipping & Delivery – All in-stock fabric orders are filled and shipped within 24 business hours via the fastest and most economical method unless you specify a carrier. All shipments are subject to shipping and/or handling charges.

Damaged, Lost, or Short Shipments/Freight Claims – Shipment damage or loss in transit is the responsibility of the carrier (UPS, FedEx, freight line). Accepting or refusing damaged shipments are the responsibility of you, the receiver. CHECK ALL SHIPMENTS carefully for damages upon receipt and prior to signing for receipt. Have the delivery driver note on the freight bill the nature and extent of damages or shortage. On workroom and custom hardware items, open all packages, immediately and inspect the merchandise's condition, even if your installation is not until a later date. Contact RM COCO immediately, within 48 hours of receipt, to make arrangements and to file damage claim with carrier. Please do not destroy or throw away any of the packing materials until the shipment is inspected and the claim is settled. Damaged goods cannot be returned to RMCOCO without prior authorization.

Cancellations - Cancellations cannot be accepted after an order has been started or cut. Return goods policy will then apply for any goods shipped or not shipped. For any approved cancellations, you must obtain and keep record of the number provided by Customer Service.

Credits - Credits will not be honored unless an approval has been obtained from RM COCO. Requests for credits are best handled when submitted to us in writing and accompanied with your invoice. Please refrain from deducting any credits until you receive our credit memo. In the case of returns, credit memos can only be issued upon receipt of the merchandise by RM COCO.

Returns –

- No returns will be accepted for credit without authorization and will be subject to inspection. Request for return of merchandise must include reason, description, quantity, invoice number, and date of invoice covering shipments. Upon approval of return due to RM mistake, a prepaid return label will be sent to you. Simply call the toll-free number printed on the return label to schedule a pick-up of the return merchandise. Otherwise, freight to and from will be customer responsibility.
- Merchandise will not be accepted for credit 30 days after original shipping date.
- All credits will be applied toward your account. No cash refunds or checks will be issued.
- Cut yardage material should be inspected for flaws, pattern correctness, quality, color and dye lot before cutting and fabricating. If your order is drop shipped directly to your workroom, we suggest you order a cutting shipped to you from the same piece for prior approval. We cannot credit your account for goods which have been cut or fabricated. We do not guarantee dye lots and will not issue credit for dye lot variations unless a sample cutting was submitted with your order for matching.
- On authorized returns, the following schedule will apply: Defective goods, not cut or fabricated, will be credited at your cost-plus delivery charges (if RM fault) when authorized for return.
- When any merchandise is returned at no fault of the vendor, a 25% restocking fee, to be no less than \$25, will apply along with freight costs that were incurred. No returns on fabric, lining or trim will be accepted for 6 yards or less.
- Custom ordered products may not be returned except for defective workmanship and request for return authorization must be made within 2 weeks from date of invoice.
- No returns will be accepted without prior authorization. Fabric must be rolled on a tube and returned in same condition and packaging.
- Replacement orders are shipped and billed to your account or credit card. Upon receipt of your returned original order, a credit will be issued to your account for the goods returned based on inspection.

Limited Stock and Discontinued Items – All sales for limited stock or discontinued items are final and not eligible for return or credit.

Advertising - All advertising of RM COCO products must be dignified, tasteful and professional. Unauthorized use of our trademarks, without prior written approval by RM COCO is prohibited.

Fabric, Lining & Trim

Note: Minimum order (1) yard - Fabric, Lining & Trim orders have a minimum requirement of one yard unless a deposit/non-cancellation purchase order is required for special orders, large orders, slow moving items, and/or older items (even for active stock items).

Check Stock - It is recommended to check stock on all patterns and trims prior to placing orders as stock availability can change at any time.

Reserves - For customers with an account number, we will reserve yardage for ten (10) calendar days as a hold or swatch for approval. We are not obligated to inform customer that a reserve has expired.

Back Orders - If you approve your order as a back order and are given an expected shipment or arrival date, please note that back orders may arrive earlier or later than anticipated. Cancellation may be granted (as described previously) only prior to the vendor processing the order.

Cut Lengths - The length of your cuts is very important to us in the processing of your order. Occasionally, we must fill your order with more than one cut. Please make sure to specify your cuts when ordering.

Pattern Repeats - All pattern repeats are approximate. There may be slight variations from one dye lot to the next. In order to help avoid a shortage, we recommend you order slightly more when repeats are involved.

Dyelots - Due to inherent variation in dye lots, we cannot guarantee color matches unless a swatch of the desired color is submitted with the order. Due to color variability in computer and screen monitors, we have no liability if colors of the products do not match their display on the website. We will not accept the return of an order because of color variation from that of our sample. If dye lots are critical, please request a swatch for approval.

Silks - We do not guarantee silks against fading or for precise color matching, colorfastness and durability. Cutting from current stock is recommended.

Shrinkage - It is possible for atmospheric conditions to cause contraction or expansion in some fabrics. This is an inherent characteristic in many fabrics and we will not be held responsible should this occur. You may wish to minimize your risk by allowing adequate fabric in hems for potential adjustment, should it be necessary.

Flaws or Damages (Inherent Imperfections) - No one has come up with a remedy of eliminating flaws from fabric. One prevention for receiving a flaw in the middle of a panel is to include your desired cut lengths when ordering, so we may cut around flaws or allow additional yardage where necessary. In the event an extra length is necessary because of flaws, we urge you to advise us immediately as our yardage availability on the balance of your bolt of fabric may lessen each day as more orders come in. We keep a record of the bolt from which your cutting was made and at your request, will send you the additional yardage from that same bolt whenever possible.

Roll Direction - Many fabrics today are delivered to RM COCO rolled with the face side to the inside of the bolt, as well as with the face side to the outside of the bolt. RM COCO will make every effort to roll fabric face side in, however we cannot guarantee this. Many fabrics are reversible or appear reversible. It is imperative that your workroom or decorator knows which side is specified or intended to be used as the face side of your treatment. RM COCO is not responsible for errors made by using the incorrect face for your treatment.

Textile Finishing Services - Merchandise cannot be returned once it has undergone a process such as flame-proofing, water repelling, stain resistance, piece-dyeing, washing or dry cleaning.

Custom Creations

(Please see Fabric, Trim & Lining section for additional policies)

Custom Orders - Custom Creations by RM COCO fabricates custom draperies, top treatments, soft shades, bedspreads, pillows and many accessories. We will fabricate using COM (customer's own material) or RM COCO's material, which affords you special savings. Workroom Customer Service may be reached at 800.325.8025 ext. 1

Multiple Width Draperies - Because fabric, unlike paper, is not a completely stable "substance", it cannot be taken for granted that when it is printed the pattern is completely "square" on the cloth. Although in printing every effort is made to avoid distortion, occasionally it will exist. Therefore, when planning multiple width draperies, please make certain BEFORE CUTTING that pattern alignment is adequate to produce a satisfactory end result.

Guarantees - We guarantee all custom window treatments against defects in workmanship for a period of three months after date of shipment. Alternative products may have separate guarantees. Please refer to the individual vendor catalogs for more information concerning alternative product guarantees.

Please refer to the style guide for additional Custom Creations terms and conditions.

RM COCO Decor Ltd Fabric

Pattern Name	Fiber Content	Vertical Fire					Workroom	Suggested Retail
		Width	Repeat	Retardant	Exclusive	Railroaded	Price Code	
1058CB	75% Silk 25% Polyester	55"	4.75"	No	No	No	17	\$67.90
10SR	60% Cotton 40% Wool	51"		No	Yes	No	47	\$216.90
1239CB	55% Cotton 45% Polyester	54"	1.25"	No	No	No	14	\$56.90
1245CB	100% Cotton	54"	9"	No	No	No	10	\$39.90
1326CB	50% Polyester 50% Acrylic	54"	6"	No	Yes	No	18	\$72.00
1342CB	100% Linen	54"		No	No	No	40	\$160.20
1353CB	100% Polyester	56"		No	No	No	13	\$54.90
1358CB	74% Viscose 23% Polyester 3% C	54"	2.38"	No	Yes	No	25	\$130.90
1379CB	50% Cotton 28% Rayon 22% Polyester	54"	0.32"	No	No	No	16	\$67.90
1380CB	70% Cotton 30% Polyester	54"	0.58"	No	No	No	15	\$62.90
1483CB	88% Cotton 12% Polyester	54"	0.13"	No	No	Yes	12	\$51.90
1484CB	88% Cotton 12% Polyester	54"	0.27"	No	No	No	11	\$45.90
14SR	78% Linen 17% Viscose 5% Polyester	54"	15.75"	No	Yes	No	51	\$247.90
1509CB	74% Cotton 26% Polyester	58"	1.5"	No	No	No	7	\$28.90
1520CB	78% Acrylic 22% Polyester	54"	19"	No	Yes	No	22	\$103.90
1555CB	70% Cotton 30% Polyester	54"		No	No	No	17	\$75.90
1587CB	60% Cotton 40% Wool	55"	23"	No	Yes	No	31	\$175.90
15SR	48% Linen 52% Viscose	52"	31.5"	No	Yes	No	68	\$492.90
1616CB	80% Polyester 20% Rayon	54"	1.25"	No	No	No	14	\$59.90
1619CB		54"		No	No	No	10	\$43.90
1621CB	100% Polyester	54"		No	No	No	16	\$69.90
1623CB	84% Cotton 16% Acrylic	54"	4.2"	No	No	Yes	13	\$51.90
1628CB	88% Polyester 12% Rayon	54"	2"	No	No	No	10	\$43.00
1664CB	73% Rayon 27% Polyester	54"		No	No	No	38	\$144.90
1690CB	56% Rayon 44% Polyester	54"	17.94"	No	No	No	16	\$63.00
16SR	54% Linen 46% Viscose	54"	30.3"	No	Yes	No	53	\$240.90
1736CB	63% Polyester 35% Viscose 2% Plymde	55"		No	No	No	21	\$111.80
1755CB	100% Polyester	55"		No	No	No	9	\$39.90
1762CB	62% Viscose 19% Linen 16% Polyester	55"		No	Yes	No	26	\$143.90
1763CB	50% Silk 50% Cotton	53"	0.25"	No	Yes	No	30	\$190.90
1766CB	52% Rayon 48% Polyester	60"	3.25"	No	No	No	28	\$78.90
1826CB	52% Polyester 48% Nylon	50"	7.25"	No	No	No	18	\$76.10
1865CB	54% Cotton 46% Polyester	54"		No	No	No	16	\$67.90
1927CB	70% Cotton 30% Polyester	54"	0.58"	No	Yes	No	14	\$56.90
1982CB		54"	6.13"	No	Yes	No	16	\$64.90
2013CB	50% Polyester 50% Viscose	60"	1.38"	No	No	No	23	\$57.90
2014CB	75% Rayon 25% Polyester	54"	8.5"	No	No	No	30	\$89.90
2029CB	100% Cotton	52"	1"	No	Yes	No	27	\$159.90
2038CB	62% Polyester 32% Cotton 6% Rayon	54"	3.75"	No	No	No	14	\$55.90
2040CB	55% Linen 45% Cotton	54"	27"	No	No	No	23	\$105.90
2042CB	100% Cotton	54"		No	No	No	35	\$122.90
2052CB	100% Polyester	56"		No	No	No	29	\$86.90
2060CB	55% Linen 45% Rayon	54"		No	No	No	16	\$67.90
2143CB	100% Cotton	54"	7"	No	No	No	21	\$94.90
2166CB	100% Cotton	54"	9"	No	No	No	20	\$89.90
2170CB	100% Polyester	57"		No	No	No	27	\$75.90
2175CB	90% Linen 8% Viscose 2% Cotton	51"	2.5"	No	Yes	No	23	\$114.90
2176CB	58% Linen 23% Polyester Filament 12% Cotton	50"	1.75"	No	Yes	No	21	\$98.90
2177CB	57% Linen 24% Polyester Filament 10% Cotton	50"	3.8"	No	Yes	No	24	\$114.90
2178CB	75% Linen 25% Cotton	53"	6"	No	Yes	No	26	\$135.90
2182CB	61% Cotton 39% Polyester	57"	1.5"	No	No	No	30	\$93.90
2184CB	100% Polyester	54"	1.4"	Yes	No	No	20	\$94.90
2185CB	86% Rayon 14% Polyester	54"		No	No	No	16	\$67.90
2188CB	100% Polyester	55"	4.94"	No	Yes	No	20	\$87.90
2189CB	52.19% Rayon 47.81% Cotton	56"	3.5"	No	Yes	No	20	\$84.90

Prices are effective as of 7/1/2026 and are subject to change without notice.

Pattern Name	Fiber Content	Width	Vertical Repeat	Fire Retardant	Exclusive	Railroaded	Workroom Price Code	Suggested Retail
2195CB	100% Cotton	54"	14.88"	No	No	No	20	\$89.90
2200CB	100% Cotton	54"	3.5"	No	No	No	20	\$89.90
2215CB	100% Cotton	54"	14.4"	No	Yes	No	20	\$88.90
2227CB	100% Linen	56"		No	No	No	42	\$179.90
2239CB	100% Cotton	54"		No	No	No	16	\$71.90
2245CB	60% Cotton 25% Polyester 15% Rayon	56"	17"	No	No	No	30	\$86.90
2251CB	100% Polyester	57"	3.75"	No	No	No	15	\$56.90
2SR	55% Silk 45% Cotton	55"		No	Yes	Yes	65	\$599.90
31SR	59% Linen 37% Viscose Rayon 4% Spun Polyester	51.25"	24.8"	No	Yes	No	67	\$468.90
37SR	100% Polyester	53"	30.5"	No	Yes	No	41	\$289.90
38SR	63% Flax 35% Viscose 2% Cotton	54"	25.5"	No	Yes	No	46	\$199.90
39SR	74% Flax 24% Viscose 2% Cotton	55"	15.5"	No	Yes	No	41	\$166.90
40SR	63% Flax 35% Viscose 2% Cotton	54"	15.25"	No	Yes	No	31	\$191.90
41SR	66% Flax 32% Viscose 2% Cotton	54"	13.75"	No	Yes	No	48	\$218.90
43SR	100% Cotton	54"	15.13"	No	Yes	No	33	\$107.90
44SR	100% Linen	58"	15.38"	No	Yes	No	40	\$153.90
45SR	92% Linen 8% Viscose	54"	21.65"	No	Yes	No	55	\$265.90
46SR	74% Linen 19% Viscose 7% Spun Polyester	54"	31.49"	No	Yes	No	65	\$340.90
47SR	53% Linen 18% Silk 21% Viscose 8% Polyester	54"	10.43"	No	Yes	No	66	\$384.90
48SR	82% Linen 13% Viscose 5% Polyester	54"	31.49"	No	Yes	No	59	\$290.90
49SR	58% Linen 29% Viscose 13% Polyester	54"	25.98"	No	Yes	No	67	\$513.90
50SR	66% Linen 24% Viscose 10% Polyester	54"	15.74"	No	Yes	No	55	\$274.90
51SR	62% Linen 26% Viscose 12% Polyester	54"	15.74"	No	Yes	No	61	\$325.90
5SR	79% Viscose 12% Polyester 8% Linen 1% Silk	53"	41"	No	Yes	No	49	\$207.90
61SR	55% Linen 45% Viscose	53"	24.38"	No	Yes	No	37	\$126.90
62SR	55% Linen 45% Viscose	52"	25"	No	Yes	No	33	\$101.90
63SR	55% Linen 45% Viscose	52"	25"	No	Yes	No	35	\$108.90
64SR	55% Linen 45% Viscose	52"	25"	No	Yes	No	37	\$126.90
66SR	47% Acrylic 43% Polyester 10% Nylon	52"		No	No	No	34	\$119.90
70SR	70% Acrylic 30% Polyester	60"		No	No	No	35	\$125.90
72SR	84% Mod Acrylic 16% Polyester	60"		No	No	No	32	\$106.90
7SR	60% Cotton 40% Wool	55"	35"	No	Yes	No	47	\$199.90
9SR	60% Cotton 40% Wool	54"	54"	No	Yes	No	46	\$179.90
A0007	79% Viscose 12% Polyester 8% Linen 1% Silk	53"	41"	No	Yes	No	35	\$207.90
A0136	58% Silk 42% Linen	57"	40"	No	Yes	No	42	\$289.50
A0311	63% Cotton 36% Viscose 1% Polyester	55"	10.75"	No	Yes	No	27	\$142.90
A0312	73.37% Rayon 26.69% Polyester	56"	2.69"	No	Yes	No	21	\$105.40
A0313	75.63% Rayon 24.37% Polyester	58"	6.87"	No	Yes	Yes	22	\$99.10
A0314	54.26% Cotton 45.74% Polyester	56"	3.75"	No	Yes	Yes	21	\$92.20
A0315	76% Viscose 24% Polyester	55"		No	Yes	No	23	\$117.30
A0316	81% Viscose 19% Polyester	54"	14.17"	No	Yes	No	29	\$166.90
A0329	80% Linen 20% Viscose Rayon	51"	15.35"	No	Yes	No	52	\$249.40
A0331	55% Linen 45% Viscose	52"	24.5"	No	Yes	No	25	\$116.90
A0332	60% Linen 40% Cotton	53"	24"	No	Yes	No	28	\$144.90
A0333	58% Linen 42% Cotton	54"	38.9"	No	Yes	No	31	\$157.90

Prices are effective as of 7/1/2026 and are subject to change without notice.

Pattern Name	Fiber Content	Vertical Fire		Retardant	Exclusive	Railroaded	Workroom	Suggested
		Width	Repeat				Price	
A0335	95% Linen 5% Viscose Rayon	53"	35.4"	No	Yes	No	57	\$272.00
A0339	54.99% Polyester 45.01% Rayon	55"	13.06"	No	Yes	No	23	\$106.90
A0342	73% Rayon 27% Polyester	54"		No	Yes	No	38	\$144.90
A0349	50% Silk 45% Viscose Rayon 5% Spun Polyester	51.5"	12.71"	No	Yes	No	45	\$199.90
A0355	77% Linen 19% Viscose	51"	31.5"	No	Yes	No	59	\$294.90
A0356	54% Viscose 46% Silk	51"	31.5"	No	Yes	No	64	\$334.90
A0357	78% Silk 22% Viscose	51"	31.5"	No	Yes	No	68	\$399.90
A0358	78% Linen 22% Polyester	51"	31.5"	No	Yes	No	63	\$327.90
A0359	75% Linen 25% Viscose	51"	31.5"	No	Yes	No	56	\$264.90
A0360	65% Silk 35% Viscose	51"	31.5"	No	Yes	No	62	\$313.90
A0385	55% Linen 45% Viscose	52"	24.5"	No	Yes	No	24	\$107.60
A0415	64% Cotton 30% Rayon 6% Flax	60"	6.75"	No	Yes	No	23	\$112.90
A0416	68% Cotton 32% Rayon	57"	3.75"	No	Yes	No	22	\$100.60
A0418	100% Linen	54"	6"	No	No	No	17	\$69.10
A0420	100% Linen Embroidery; Blend Base	55"	15"	No	Yes	No	47	\$209.90
A0422	40% Cotton 25% Linen 20% Silk 15% Viscose	54"	14.96"	No	Yes	No	40	\$305.90
A0428	100% Cotton	54"		No	No	No	35	\$125.90
A0432	51% Viscose 49% Linen Embroidery: Viscose	54"	12.2"	No	Yes	No	28	\$156.90
A0433	52% Linen 48% Cotton	54"	14.12"	No	Yes	Yes	29	\$169.90
A0442	73% Linen 27% Viscose	53"	15.75"	No	Yes	No	49	\$220.90
A0455	100% Linen	54"	6"	No	No	No	27	\$140.90
A0456	100% Linen	54"	16"	No	No	No	45	\$199.90
A0457	100% Linen	54"	16"	No	No	No	28	\$151.90
A0460	49% Linen 51% Viscose Embroidery: Viscose Yarn	54"	16.9"	No	Yes	No	32	\$199.90
A0465	78% Viscose 22% Polyester	54"	12.88"	No	Yes	No	31	\$183.90
A0466	44% Polyamide 34% Polyester 17% Viscose	54"	2.5"	No	Yes	No	20	\$97.90
A0468	86% Viscose 14% Polyester	54"		No	Yes	No	31	\$199.90
A0469	84% Viscose 16% Polyester	54"		No	Yes	No	29	\$174.90
A0470	49% Linen 51% Viscose Embroidery: Viscose Yarn	54"	14.17"	No	Yes	Yes	37	\$277.90
A0475	78% Linen 11% Viscose 11% Spun Polyester	54"	25.6"	No	Yes	No	49	\$220.90
A0476	7% Silk 19% Linen 17% Cotton 10% Polyester 47% Viscose	54"	25.59"	No	Yes	No	58	\$295.90
A0480	70% Wool 30% Cotton	41"	35"	No	Yes	Yes	34	\$199.90
A0481	30% Wool 70% Linen	56"	51"	No	Yes	Yes	33	\$174.40
A0487	65% Cotton 35% Viscose Rayon	54"	12.75"	No	No	No	28	\$156.00
A0488	45% Cotton 30% Linen 8% Viscose 7% Polyester	54"	15.75"	No	Yes	No	45	\$199.90
A0489	38% OCT 25% Linen 26% Viscose 11% Polyester	54"	15.75"	No	Yes	No	45	\$199.90
A0490	89% Linen 8% Viscose 3% Spun Polyester	54"	3.15"	No	Yes	No	40	\$157.90
A0491	63% Cotton 26% Viscose 11% Spun Cotton	54"	31.5"	No	Yes	No	52	\$239.90
A0505	30% Polyester 24% Viscose 36% Linen 10% Cotton	54"	23.05"	No	Yes	No	23	\$99.90
A0506	36% Linen 30% Polyester 24% Viscose 10% Cotton	54"		No	Yes	No	21	\$99.90
A0507	36% Linen 30% Polyester 24% Viscose 10% Cotton	54"	8"	No	Yes	No	22	\$99.90
A0508	36% Linen 30% Polyester 24% Viscose 10% Cotton	54"	1.38"	No	Yes	No	21	\$99.90
Action - Sunbrella®	100% Acrylic	54"		Yes	No	No	38	\$145.90
ADAMS	41% Linen 46% Viscose 13% Polyester	51"	15"	No	Yes	No	45	\$199.90

Prices are effective as of 7/1/2026 and are subject to change without notice.

Pattern Name	Fiber Content	Vertical Fire					Railroaded	Workroom	Suggested Retail
		Width	Repeat	Retardant	Exclusive	Price Code			
ADAPTATION	58% Cotton 42% Polyester	55"		No	No	No	28	\$80.90	
AESOP	100% Polyester	54"	13"	No	No	No	15	\$59.90	
Akbar	100% Cotton	58"	6.25"	Yes	No	No	29	\$83.90	
Akbar Paisley	100% Cotton	58"	24"	Yes	No	No	30	\$83.90	
Ala Moana	65% Polyester 35% Cotton	55"	27.56"	Yes	No	No	25	\$56.90	
Alabaster	100% Cotton	54"	26.25"	Yes	No	No	32	\$94.90	
Algonquin	66% Polyester 34% Linen	54"	14.39"	No	No	No	29	\$80.90	
Alicante	90% Cotton / 10% Linen	55.5"		No	No	No	16	\$35.90	
All A Twitter	53% Rayon 40% Polyester 7% Flax	54"	8.63"	Yes	Yes	No	33	\$105.90	
All that Glitters	100% Polyester	51"		No	No	No	28	\$80.90	
Alton - FibreGuard®	100% Polyester	58"	4.13"	Yes	Yes	No	31	\$91.90	
Amalfi Damask	67% Viscose 20% Polyester 13% Cotton	56"	11"	No	Yes	No	34	\$108.90	
Amalfi Stripe	67% Viscose 20% Polyester 13% Cotton	56"	6.88"	No	Yes	No	34	\$108.90	
Amaya	65% Linen 24% Viscose 6% Spun Polyester 5% Cotton	58"	23.03"	No	Yes	No	50	\$225.90	
Anastasia	100% Polyester	54"	36"	Yes	No	No	32	\$86.90	
Angelica	85% Polyester 15% Cotton	54"	18.88"	No	Yes	No	37	\$130.90	
Animal Instinct	48.29% Rayon 39.27% Polyester	55"	14.06"	Yes	No	Yes	36	\$120.90	
ANSARI	100% Linen	51"	7.87"	No	Yes	No	45	\$199.90	
Ansley Park	90% Polyester 10% Viscose Embroidery: 100% Cotton	56"	18.5"	No	Yes	No	37	\$129.90	
Arasaig - Tommy Bahama® Sunbrella®	100% Acrylic	54"	1.81"	Yes	Yes	No	39	\$154.90	
Arcadia Scroll	72% Polyester 21% Cotton 7% Linen	54"	18.75"	Yes	Yes	No	31	\$90.90	
Arcodoro	100% Polyester	54"	13.5"	Yes	No	No	31	\$95.90	
Ardley	55% Cotton 45% Linen	54"	31"	Yes	No	No	31	\$118.90	
Armstrong Crypton	89% Polyester 11% Cotton	54"	1.12"	Yes	No	Yes	33	\$112.90	
Around In Circles	100% Polyester	55"	8.1"	Yes	No	No	26	\$67.90	
Arroyo Ikat	32% Viscose 26% Linen 22% Cotton 20% Spun Polyester	53"	15.35"	No	Yes	No	38	\$143.90	
Aruba	100% Polyester (UV)	55"	0.06"	Yes	No	Yes	31	\$99.90	
Assemblage	51.67% Rayon 29.02% Polyester	57"	9.5"	Yes	Yes	Yes	30	\$89.90	
Astaire Plaid	50% Polyester 50% Cotton	55"	6.25"	Yes	No	No	23	\$53.90	
Astonishing 130" FR Sheer	100% Polyester	130"		Yes	No	Yes	26B	\$99.90	
Astoria Stripe	100% Polyester FR	124"	15.13"	Yes	No	Yes	30B	\$123.90	
Astounding 130" FR Sheer	100% Polyester	130"		Yes	No	Yes	26B	\$96.90	
Atelier	88% Polyester 12% Viscose	55"		No	Yes	No	38	\$144.90	
ATHENA	100% Cotton	54"	1.68"	No	No	No	16	\$45.90	
Athens	100% Polyester	116"		Yes	No	Yes	21B	\$75.90	
Autumnal	69% Cotton 31% Polyester	55"	14.17"	No	Yes	No	26	\$69.90	
AVERY	100% Polyester	54"	3"	No	No	No	19	\$78.90	
Avignon Garden	31% Viscose 30% Cotton 25% Polyester 14% Linen	57"	7.5"	No	Yes	No	41	\$163.90	
Awash	55% PVC 40% Polyester 5% PU	54"		Yes	No	No	25	\$67.90	
Babylon	100% Cotton	54"	24.63"	Yes	No	No	31	\$89.90	
Bacharach Crypton	68% Cotton 27% Polyester 5% Recycled Polyester	54"		Yes	No	Yes	29	\$88.90	
Balmoral Garden	70% Rayon 20% Polyester 8% Cotton 2% Flax	56"	28"	Yes	No	No	47	\$199.90	
Bamboo Garden IO	100% Polyester	56"	13"	Yes	No	No	12	\$30.90	
BANGALORE	100% Cotton	54"	9"	Yes	No	No	25	\$63.90	
MEDALLION									
Bangkok	100% Polyester	116"	33"	Yes	No	Yes	26B	\$99.90	
Bar Harbour IO	100% Polyester	56"	13.25"	Yes	No	No	12	\$30.90	
Barbados	100% Polyester (UV)	55"		Yes	No	No	31	\$97.90	
Barcelona	100% Polyester	116"	30"	Yes	No	Yes	23B	\$81.90	

Prices are effective as of 7/1/2026 and are subject to change without notice.

Pattern Name	Fiber Content	Vertical Fire					Railroaded	Workroom	Suggested Retail
		Width	Repeat	Retardant	Exclusive	Price Code			
Barely There Wide-Width Casement	100% Acrylic	118"	0.5"	Yes	No	Yes	38B	\$176.90	
Bargello	93.96% Cotton 6.04% Flax	54"	2.25"	No	Yes	Yes	39	\$157.90	
BARRINGTON	35% Linen 54% Viscose 11% Polyester	51"	15.25"	No	Yes	No	28	\$151.90	
Barrister	80% Polyester 20% Linen	57"		No	Yes	No	21	\$50.90	
Barrymore Crypton	76% Polyester 24% Acrylic	54"		Yes	No	No	31	\$100.90	
Barzona	55% PVC 40% Polyester 5% PU	54"		Yes	No	No	25	\$67.90	
Basie Crypton	50% Acrylic 50% Polyester	54"	6"	Yes	No	Yes	36	\$123.90	
Batik Medallion IO-Tommy Bahama® Sunbrella®	100% Acrylic	54"	9.5"	Yes	Yes	No	39	\$148.90	
BATISTE	100% Polyester	118"		Yes	No	Yes	2B	\$25.90	
BATISTE 60	100% Polyester	60"		Yes	No	No	4	\$15.90	
Bauble	65% Viscose 22% Polyester 13% Cotton	56"	0.63"	No	Yes	No	33	\$108.90	
BAXTER PLAID	100% Cotton	54"	5.4"	Yes	No	No	22	\$65.90	
Bayside IO	50% Polypropylene 50% Polyester	54"		Yes	No	Yes	28	\$82.90	
Beach Blanket IO	57% Polypropylene 43% Polyester	55"	0.2"	Yes	No	No	28	\$82.90	
Beach Party	100% Polyester	54"	18"	Yes	No	No	27	\$74.90	
Beatrix's Garden	100% Cotton	55"	12.6"	No	No	No	26	\$68.90	
BECKETT	82% PVC 17% Polyester 1% PU	55"		Yes	Yes	No	16	\$47.90	
Beekman	54.78% Rayon 45.22% Cotton	53"	0.88"	No	Yes	Yes	36	\$135.90	
BEGONIA	100% Polyester	53"		Yes	No	No	15	\$32.90	
Beguile	46% Viscose 36% Polyester 18%	54"	7.99"	No	Yes	No	34	\$109.90	
Bel Air Plaid	80.3% Rayon 19.7% Polyester	55"	8.63"	No	Yes	No	31	\$94.90	
Bel Aire	69% Rayon 31% Polyester	54"	3.38"	No	Yes	No	30	\$89.90	
Belgique	100% Polyester	55"		Yes	No	No	22	\$56.90	
BELLS	100% Polyester	118"	5.75"	Yes	No	Yes	11B	\$77.90	
Belmont - Crypton®	100% Polyester	54"		Yes	No	No	27	\$76.90	
Belvedere Plaid	100% Cotton	54"	5.63"	Yes	No	No	31	\$94.90	
Bennett Crypton	65% Polyester 18% Recycled Polyester 17% Cotton	54"	13.5"	Yes	No	Yes	31	\$95.90	
Bergman Crypton	100% Polyester	54"		Yes	No	No	29	\$89.90	
Bespoke Stripe	100% Polyester	54"	1.3"	No	No	No	32	\$105.60	
Between The Lines	100% Polyester	118"	0.8"	Yes	No	Yes	24B	\$86.90	
Wide-Width Sheer									
Biarritz	62.97% Rayon 18.66% Polyester	56"	6.38"	No	Yes	Yes	33	\$103.90	
Bienville	70% Viscose 30% Linen Embroidery: 74% Viscose 26% Cotton	56"	12.13"	No	Yes	No	37	\$135.90	
Big Cat	74% Rayon 26% Polyester	54"	11"	Yes	Yes	No	37	\$133.90	
Biltmore Garden	56% Viscose 44% Polyester	54"	17"	No	Yes	No	39	\$144.90	
Blanton	100% Polyester	59"	5"	Yes	No	No	28	\$79.90	
BLEND	100% Polyester	54"		No	Yes	No	18	\$78.90	
Blend - Sunbrella®	97% Acrylic 3% Other	54"		Yes	No	No	36	\$129.90	
Blenheim Damask	56% Rayon 44% Polyester	56"	21"	No	No	No	38	\$129.90	
Blenheim Stripe	58% Polyester 42% Rayon	54"		No	No	No	29	\$88.90	
Blockbuster 130" FR Sheer	100% Polyester	130"		Yes	No	Yes	8B	\$30.90	
Blurred Lines	100% Polyester	59"	11.88"	Yes	No	No	23	\$56.90	
Bogart Crypton	73.79% Polyester 26.21% Olefin	54"		Yes	No	No	27	\$77.90	
Borghese Damask	100% Polyester	54"	43"	No	Yes	No	37	\$112.90	
Botanical Study	100% Polyester	55"	36.61"	No	No	No	36	\$107.90	
Boxed In	100% Polyester	57"	4"	Yes	No	No	24	\$59.90	
BOYLE	100% Polyester Embroidered	54"	6.38"	No	Yes	No	24	\$60.00	
Brando Crypton	86% Polyester 14% Modacrylic	55"		Yes	No	No	25	\$68.90	

Prices are effective as of 7/1/2026 and are subject to change without notice.

Pattern Name	Fiber Content	Vertical Fire		Retardant	Exclusive	Railroaded	Workroom Price Code	Suggested Retail
		Width	Repeat					
Braxton Stripe	78% Rayon 21% Cotton 1% Nylon	54"	1"	No	Yes	Yes	33	\$111.90
BREAKFRONT	75% Linen 25% Rayon	54"		No	No	No	36	\$135.90
Brentwood Court	100% Polyester	55"	13.5"	Yes	No	No	26	\$68.90
Briarwood	85% Polyester 15% Cotton	54"	9.5"	No	Yes	No	37	\$135.90
BRIDGEFORD	55% Linen 45% Rayon	54"		No	No	No	18	\$93.90
Bridlewood Paisley	82% Polypropylene 18% Polyester	54"	13.25"	Yes	No	No	30	\$85.90
Brigadoon	45% Viscose 35% Polyester 20% Linen	57"		No	No	No	25	\$68.90
Bronco	100% Polyester	58"		No	Yes	No	17	\$38.90
Bruges	100% Linen	56"		No	No	No	26	\$71.90
Brushstroke Check	100% Cotton	54"	6.5"	Yes	No	No	22	\$52.90
BUNGALOW	100% Polyester	55"		No	No	No	17	\$51.90
Burgoo - Crypton®	100% Polyester	54"		Yes	No	No	26	\$74.90
Button Trellis	100% Cotton Embroidery 100% Viscose Base	54"	11.38"	No	Yes	No	39	\$146.90
Cabo San Lucas	55% Linen 45% Polyester	116"	23"	No	No	Yes	25B	\$93.90
Cagney Crypton	70% Cotton 30% Polyester	54"		Yes	No	No	28	\$83.90
Cambridge Garden	100% Polyester	55"	18.11"	No	No	No	42	\$168.90
CAMERA	100% Polyester	118"		Yes	No	Yes	8B	\$40.90
CANADIAN	100% Polyester	124"		Yes	No	Yes	19B	\$63.90
Canaletto	100% Polyester	118"		Yes	No	Yes	21B	\$75.90
Canvas - Sunbrella®	100% Acrylic	54"		Yes	No	No	30	\$83.90
Capella	60% Rayon 40% Polyester	55"	14.17"	No	No	No	34	\$111.90
Capistrano	100% Polyester	55"		Yes	Yes	No	18	\$40.90
Caprice Scroll	85% Polyester 15% Cotton	54"	17.25"	Yes	No	No	26	\$65.90
Caravan Trellis	67% Polyester 33% Cotton	55"	5"	No	No	No	23	\$55.90
Carlyle	53% Polyester 47% Rayon	55"	2.13"	Yes	Yes	No	30	\$91.90
Carlyle Stripe	44.89% Rayon 31.2% Polyester 23.91% Cotton	55"	0.13"	No	Yes	Yes	29	\$88.90
CASSONE	100% Linen	55"		No	No	No	42	\$179.90
Cast - Sunbrella®	100% Acrylic	54"		Yes	No	No	27	\$79.90
CATSKILL	100% Polyester	120"		Yes	Yes	No	28B	\$112.90
Celestial	100% Polyester Face 100% Acrylic Backing	55"		Yes	No	No	28	\$81.90
Chain Maille	57.7% Polyester 40.5% Cotton 1.9% Flax	54.75"	0.44"	Yes	No	Yes	31	\$100.90
Chalcott Garden	65% Cotton 35% Polyester	54"	13.5"	Yes	No	No	28	\$75.90
CHANEL	49% Polyester 24% Cotton 23% Acrylic 4% Rayon	55"	4.25"	No	No	No	35	\$117.90
Changing Directions	100% Polyester	54"	3"	Yes	No	No	34	\$108.90
Chanteclair	81% Viscose 12% Polyester 7% Cotton	49"	27.6"	No	Yes	No	65	\$338.90
CHARTWELL	100% Polyester	54"	13.5"	Yes	No	No	28	\$100.90
DAMASK								
Cherry Blossom	70% Viscose 30% Linen Embroidery: 100% Viscose	57"	12.38"	No	Yes	No	40	\$153.90
Chevalier	100% Polyester	55"	9.5"	No	Yes	No	31	\$93.90
Chevon Wide-Width Sheer	88% Polyester 9% Acrylic 3% Wool	118"		Yes	Yes	Yes	34B	\$149.90
CHEVRON	72% Cotton 28% Polyester	54"	7.75"	No	No	No	23	\$73.90
Chevron Stripe	51.96% Rayon 26.82% Polyester 16.76% Cotton 4.46% Flax	57"	14"	Yes	Yes	Yes	37	\$128.90
Crypton®								
Chevronne	51% Rayon 25% Cotton 24% Polyester	54"	3.33"	No	Yes	No	35	\$114.90
Cheyenne	100% Polyester	54"	9.38"	Yes	No	No	33	\$105.60
Cheyenne Stripe	100% Polyester	55"		Yes	No	No	32	\$105.60
Chiclet	100% Cotton	54"	2.25"	Yes	No	No	26	\$73.90
China Obsession	100% Polyester	56"	27"	Yes	No	No	31	\$89.90
CHLOE	100% Cotton	54"	27"	No	No	No	26	\$63.50
Christoval Check	100% Polyester FR	118"	3.75"	Yes	No	Yes	32B	\$137.90
Cierra Fret	100% Polyester	60"	13.78"	Yes	No	No	25	\$63.90
Cimmaron Lodge	55% Linen 45% Viscose	56"	27"	Yes	No	No	33	\$99.90

Prices are effective as of 7/1/2026 and are subject to change without notice.

Pattern Name	Fiber Content	Vertical Width	Fire Repeat	Retardant	Exclusive	Railroaded	Workroom Price Code	Suggested Retail
Cipriani Damask	100% Polyester	55"	9.65"	No	No	No	32	\$99.90
Circus Friends	62% Viscose 28% Cotton 10% Polyester	54"	27"	Yes	No	No	39	\$137.90
Ciudad	70% Viscose 30% Linen	54"	27.5"	No	No	No	34	\$100.90
CLOSEUP	90% Polyester 10% Linen	118"		No	No	Yes	11B	\$49.90
Clubhouse	100% Polyester	58"		Yes	Yes	No	26	\$74.90
Clubhouse Turn - Crypton®	100% Polyester	54"		Yes	No	No	29	\$87.90
Clubroom Tweed	100% Polyester	55"		No	Yes	No	34	\$114.90
COLOBUS		118"		No	No	No	17B	\$77.90
ColorWorks Base Sample Deck Alicante - Natural	90% Cotton 10% Linen	55.5"		No	No	No	17	\$37.90
ColorWorks Base Sample Deck Bruges - White Optic	100% Linen	58"		No	No	No	21	\$51.90
ColorWorks Base Sample Deck Costello - Natural	90% Cotton 10% Linen	55.5"		No	No	No	18	\$41.90
ColorWorks Base Sample Deck Costello - White	90% Cotton 10% Linen	55.5"		No	No	No	18	\$41.90
ColorWorks Base Sample Deck Fernando - White	100% Cotton	57"		No	No	No	18	\$41.90
ColorWorks Base Sample Deck Harbor Club - Muslin	80% Polyester, 20% Linen	57"		No	No	No	17	\$37.90
ColorWorks Base Sample Deck Jalisco White	100% Cotton	59"		No	No	No	17	\$37.90
ColorWorks Base Sample Deck Ontario - White	100% Cotton	55.5"		No	No	No	17	\$37.90
ColorWorks Base Sample Deck Organic Cotton Sateen - W	100% Organic Cotton	60"		No	No	No	16	\$33.90
ColorWorks Base Sample Deck Perception - Pearl	100% Silk	55"		No	No	No	27	\$79.90
ColorWorks Base Sample Deck Portside Cotton Duck - Wh	100% Cotton	59"		No	No	No	16	\$33.90
ColorWorks Base Sample Deck Sailaway - Winter White	100% Organic Cotton	60"		No	No	No	17	\$37.90
ColorWorks Base Sample Deck Valencia - Natural	70% Viscose 30% Linen	59"		No	No	No	20	\$47.90
ColorWorks Base Sample Deck Valencia - White	70% Viscose 30% Linen	59"		No	No	No	20	\$47.90
ColorWorks Base Sample Deck Villa - White	100% Polyester	57"		No	No	No	17	\$37.90
Como Crypton	45% Polyester 55% Cotton	54"	1.75"	Yes	No	Yes	36	\$133.90
Confetti	60% Polyester 20% Acrylic 20% Cotton	55"	8.23"	Yes	No	No	33	\$104.90
Constantino	86% Rayon 13% Cotton 1% Nylon	54"		No	Yes	No	34	\$116.90
Contessa	100% Polyester	54"		Yes	No	No	16	\$35.90
Contours	55% PVC 40% Polyester 5% PU	54"		Yes	No	No	23	\$59.90
Coquette	100% Polyester	55"	4.13"	No	No	No	32	\$99.90

Prices are effective as of 7/1/2026 and are subject to change without notice.

Pattern Name	Fiber Content	Vertical Fire		Retardant	Exclusive	Railroaded	Workroom Price Code	Suggested Retail
		Width	Repeat					
Coquille	100% Cotton Embroidery 100% Viscose Base	54"	10.63"	No	Yes	No	37	\$135.90
Coral Splendor	72% Polyester 28% Viscose	56"	15"	No	No	No	33	\$105.90
Cortland	85% Polyester 15% Rayon	55"		No	Yes	No	21	\$49.90
Cosgrove	95% Polyester 5% Cotton	54"	15.75"	Yes	Yes	No	25	\$64.90
Cosgrove Stripe	95% Polyester 5% Cotton	54"		Yes	Yes	No	24	\$64.90
Costello	90% Cotton 10% Linen	55.5"		No	No	No	20	\$45.90
Cotswalds Garden	97% Polyester 3% Cotton	55"	23.88"	Yes	No	No	32	\$93.90
COUSHATTA	75% Cotton 25% Linen	54"	12.75"	Yes	No	No	30	\$86.90
Cracked Ice	100% Polyester	55"	9.17"	Yes	Yes	No	34	\$111.90
Crinkle	55% PVC 40% Polyester 5% PU	54"		Yes	No	No	25	\$67.90
Croc	67% Viscose 20% Polyester 13% Cotton	56"	7.63"	No	Yes	No	34	\$108.90
CROCUS	100% Linen	54"		No	No	No	28	\$83.90
Cromwell	100% Polyester	56"	18"	Yes	Yes	No	35	\$117.90
CRONUS	75% Viscose 25% Linen	55"	9.5"	No	No	No	39	\$144.90
Cross Stitch	75% Polyester 14% Cotton 8% Viscose 3% Linen	54"	14.25"	No	No	No	29	\$83.90
Crosscourt	55% PVC 40% Polyester 5% PU	54"		Yes	No	No	25	\$67.90
CROWN MOIRE	57% Cotton 43% Acetate	54"		No	No	No	23	\$59.90
Cubist	73% Polyester 27% Cotton	54"	1.88"	No	Yes	No	35	\$123.90
Cuddle Performance Boucle	100% Polyester	55"		Yes	No	No	22	\$53.90
Curzon	64% Polyester 32% Cotton 4% Linen	56"	4.72"	No	Yes	No	28	\$75.90
DAFFODIL	100% Polyester	53"	10.5"	Yes	No	No	17	\$67.90
DAHLIA	100% Polyester	118"		Yes	No	Yes	13	\$56.90
DALTON	100% Polyester Embroidered	54"	6.38"	No	Yes	No	24	\$60.00
Danbury Plaid	54% Cotton 46% Polyester	54"	7.25"	Yes	No	No	20	\$56.90
DANNY	52% Linen 48% Cotton	50"	4"	No	No	No	18	\$75.90
DAPPLE	100% Polyester	55"		No	No	No	20	\$62.90
Dashing Check	100% Polyester FR	120"	9"	Yes	No	Yes	33B	\$143.90
Dashing Sheer	77% Cotton 23% Polyester	55"	3.94"	No	Yes	Yes	34	\$113.90
Dashing Trellis	74% Recycled Polyester 26 Polyester	55"	5.91"	No	No	No	32	\$99.90
DAVENPORT	100% Polyester	51"	7.87"	No	No	No	30	\$85.90
DAYTONA		54"	7.25"	No	Yes	No	14	\$27.00
Daytona - Crypton®	100% Polyester	54"		Yes	No	No	25	\$65.90
Dazzle	55% PVC 40% Polyester 5% PU	54"		Yes	No	No	25	\$67.90
DEAN	100% Linen	54"	3.54"	No	Yes	No	28	\$158.90
Deauville	100% Polyester	54"		No	Yes	No	27	\$76.90
Deconstructed Stripe	100% Polyester FR	118"	2"	Yes	No	Yes	31B	\$131.90
Delacroix Damask	50% Polyester 50% Rayon	54"	19.75"	Yes	Yes	No	35	\$109.90
Deluxe Cotton Velvet	100% Cotton Face 100% Polyester Backing	54"		Yes	No	No	35	\$125.90
Derby Day - Crypton®	88% Polyester 12% Linen	54"		Yes	No	No	27	\$75.90
Devonshire	71% Polyester 28% Cotton 1% Lycra	53"	17.63"	No	Yes	No	22	\$50.90
Di Lido - FibreGuard®	100% Polyester	58"	3.13"	Yes	Yes	No	31	\$91.90
DIAMOND DAZE	58% Polyester 42% Cotton	54"	4.25"	No	No	No	26	\$90.90
Diamond Fret	66% Cotton 34% Spun Polyester	60"	15.35"	No	Yes	No	41	\$165.90
Diamond Illusion	75% Rayon 25% Polyester	56.5"	2.5"	Yes	No	No	33	\$108.90
Diamond Jubilee	47% Acrylic 42% Polyester 11% Cotton	55"	1.75"	Yes	No	No	30	\$92.90
Diamond Mine	43% Polyester 34% Cotton 23% Acrylic	55"	4.13"	Yes	No	No	27	\$70.90
Diamond Quilt	50.5% Cotton 49.5% Polyester	54"	2.36"	No	Yes	No	37	\$143.90
Diamond Stitch	55% PVC 40% Polyester 5% PU	54"	1.5"	Yes	No	No	25	\$67.90
Diamond Trellis	100% Polyester FR	118"	7.5"	Yes	No	Yes	35B	\$156.90

Prices are effective as of 7/1/2026 and are subject to change without notice.

Pattern Name	Fiber Content	Width	Vertical Repeat	Fire Retardant	Exclusive	Railroaded	Workroom Price Code	Suggested Retail
Diamond Trellis Sheer	73% Linen 22% Viscose 5% Spun Polyester	58"	15.55"	No	Yes	No	36	\$121.90
DIAZ	60% Linen 50% Viscose	51"		No	Yes	No	25	\$135.90
Diverge	55.61% Polyester 44.39% Cotton	55"	7.06"	Yes	Yes	Yes	30	\$89.90
Dockside Stripe	100% Cotton	54"		Yes	No	No	24	\$62.90
Dolby	65% Cotton 35% Polyester	55"	3"	Yes	No	No	28	\$79.90
Domani	55% Linen 45% Rayon	55"	13.5"	Yes	No	No	26	\$67.90
Donatello Damask	80.13% Rayon 19.87% Polyester	55"	24.5"	No	Yes	No	36	\$114.90
Doodle	100% Polyester	56.25"	14.5"	Yes	Yes	Yes	29	\$83.90
Dooley Stripe	63.55% Polyester 36.45% PCR Polyester	55"	0.13"	Yes	Yes	Yes	31	\$101.90
Crypton®	70% Polyester 30% Cotton	54"	4.5"	No	No	No	34	\$108.90
DORSET	100% Cotton	54"	12.75"	No	No	No	19	\$41.90
Dot To Dot	100% Polyester	54"		Yes	No	No	27	\$76.90
Down-The-Stretch - Crypton®								
DRAG	100% Linen	114"		No	No	Yes	18B	\$121.90
Drizzle	69% Recycled Polyester 31% Polyester	54"	10.24"	No	No	No	37	\$129.90
DROMEDARY		118"		No	No	No	12B	\$53.90
DUNHAM	100% Silk	51"	15.75"	No	Yes	No	45	\$199.90
Dunhill Wide-Width Sheer	73% Acrylic 27% Polyester	118"		Yes	No	Yes	31B	\$128.90
Dupione - Sunbrella®	100% Acrylic	54"		Yes	No	No	33	\$101.90
Durango Suede	100% Polyester	60"		No	No	No	25	\$69.90
DYNASTY TRELLIS	100% Cotton	54"	4.5"	Yes	No	No	17	\$45.90
Echo - Sunbrella®	100% Acrylic	54"		Yes	No	No	34	\$105.90
Eclipse	100% Polyester Face 100% Acrylic Backing	55"		Yes	No	No	28	\$81.90
EISENHOWER	32% Viscose 30% Polyester 26% Linen 12% Rayon	54"	5"	No	No	No	33	\$106.90
Elan	55% PVC 40% Polyester 5% PU	54"		Yes	No	No	25	\$67.90
Elan Stripe	69% Polyester 28% Cotton 3% Viscose	54"	7.87"	No	Yes	No	41	\$166.90
Eldorado	100% Cotton	54"	9"	Yes	No	No	28	\$76.90
Eliza	87% Linen 8% Viscose 3% Spun Viscose 2% Spun Polyester	55"	10.24"	No	No	No	40	\$154.90
ELK	100% Polyester	118"	8"	Yes	No	No	31B	\$128.90
Ellington Crypton	70% Cotton 30% Polyester	54"	0.88"	Yes	No	Yes	29	\$85.90
Emboss	55% PVC 40% Polyester 5% PU	54"		Yes	No	No	25	\$67.90
EMERSON	42% Rayon 31% Nylon 27% Polyester	53.5"	11"	No	No	No	20	\$86.90
EMPOLI	100% Polyester	118"		Yes	No	Yes	4B	\$45.90
Encantado	70% Viscose 30% Linen	54"	25.88"	No	No	No	33	\$100.90
Encantado Stripe	37.76% Rayon 36.32% Cotton 14% Polyester 11.64% PCR Polyester .28% Nylon	53"	0.25"	Yes	Yes	Yes	39	\$158.90
Crypton®								
Enchanted Garden	55% Linen 45% Rayon	54"	27"	Yes	No	No	36	\$119.90
Encircled	100% Cotton	54"	9"	No	No	No	19	\$41.90
Epitome 130" FR Sheer	100% Polyester	130"		Yes	No	Yes	9B	\$33.90
ESCAPADE	100% Cotton	54"		No	No	No	23	\$58.90
Esprit	100% Polyester	57"	11.22"	No	No	No	33	\$104.90
Essex Damask	66% Polyester 34% Cotton	55"	17"	Yes	Yes	No	26	\$68.90
Essex Fresco	66% Polyester 34% Cotton	55"	13.58"	Yes	Yes	No	26	\$68.90
Essex Trellis	66% Polyester 34% Cotton	55"	10.75"	Yes	Yes	No	26	\$68.90
Ethereal Wide-Width Casement	54% Polyester 33% Cotton 13% Acrylic	120"	2"	Yes	No	Yes	32B	\$133.90
Etruscan Trellis	100% Polyester	56"	7.5"	Yes	No	No	31	\$91.90
Etude	47% Acrylic 42% Polyester 11% Cotton	55"	2.25"	Yes	No	No	30	\$92.90

Prices are effective as of 7/1/2026 and are subject to change without notice.

Pattern Name	Fiber Content	Vertical Fire				Exclusive	Railroaded	Workroom	Suggested Retail
		Width	Repeat	Retardant	Price Code				
Eventide	100% Polyester	60"		Yes	No	No	30	\$90.90	
Everest	65% Recycled Polyester 35% Organic Cotton	60"		No	No	No	23	\$57.90	
Everglades	55% Linen 45% Viscose	52"	25"	No	Yes	No	37	\$126.90	
Exotica	38% Linen 25% Cotton 29% Viscose	54"	30.13"	No	Yes	No	48	\$206.90	
Expedition	100% Organic Cotton	60"		No	No	No	21	\$52.90	
Eyelash Sheer	65% Cotton 35% Polyester	55"	1.58"	No	Yes	No	39	\$156.90	
FAIRMONT	45% Viscose 55% Linen	55"		No	No	No	29	\$53.90	
Falling Leaves	100% Cotton Embroidery 100% Viscose Base	54"	15"	No	Yes	No	38	\$137.90	
Fandance	70% Viscose 30% Linen	59"	6.5"	No	Yes	No	28	\$79.90	
Fantasia	100% Wool Embroidery 100% Viscose	55"	30.25"	No	Yes	No	47	\$199.90	
Fantasia Paisley	37% Linen 32% Spun Polyester 31% Cotton	57"	22.05"	No	Yes	No	50	\$227.90	
Farrier - Crypton®	100% Polyester	54"		Yes	No	No	27	\$76.90	
FAULTLINE	100% Polyester	59"		No	No	No	17	\$51.90	
FAUX BOIS	45% Viscose 55% Linen	54"	25.2"	Yes	No	Yes	23	\$69.90	
Feather Dance	100% Cotton	54"	43"	Yes	No	No	34	\$94.90	
Feather In My Cap	84% Spun Viscose 16% Polyester	53"	24.8"	No	Yes	No	41	\$158.90	
Feliciano Crypton	100% Polyester	54"	27"	Yes	No	Yes	36	\$114.90	
FERN GROTTTO	59% Polyester 41% Cotton	54"	15.88"	Yes	No	No	27	\$93.90	
Fernando	100% Cotton	57"		No	No	No	21	\$49.90	
Fernwood	50% Linen 30% Rayon 20% Polyester	54"	15.5"	No	No	No	22	\$67.90	
FERVOR	100% Polyester	54"		Yes	No	No	21	\$53.90	
Festival Day	62% Spun Viscose 24% Cotton 14% Linen	59"	21.26"	No	Yes	No	41	\$152.90	
Festivale	52% Polyester 48% Acrylic	54"	5"	Yes	No	No	26	\$67.90	
Fiesta Key - Tommy Bahama® Sunbrella®	100% Acrylic	54"	37.25"	Yes	Yes	No	48	\$199.90	
FILAGREE	100% Polyester	104"	11.75"	No	No	Yes	17B	\$73.90	
FILLMORE	33% Viscose 27% Linen 27% Polyester 13% Rayon	54"	11.5"	No	No	No	36	\$126.90	
FILM	60% Rayon 40% Polyester	118"		No	No	Yes	18B	\$83.90	
FILTER	100% Polyester	118"		Yes	No	Yes	15B	\$67.90	
FINE FEATHERED	20% Linen 80% Polyester	54"	25.2"	Yes	No	Yes	23	\$69.90	
Firenza	70% Viscose 30% Linen	59.06"	11.75"	No	Yes	No	28	\$79.90	
Fitzgerald Crypton	47.32% Polyester 26.66% Recycled Polyester 26.02% Cotton	54"	13.5"	Yes	No	Yes	34	\$111.90	
FLAGLER	100% Cotton	54"		No	No	No	22	\$53.00	
FLASH	100% Polyester	118"		Yes	No	Yes	13	\$56.90	
Flash Force	64% Rayon 36% Polyester	57"	7"	Yes	No	No	28	\$77.90	
Flight of Fancy	69% Cotton 17% Viscose 10% Polyester 4% Metallic	54"	15"	No	Yes	No	62	\$333.90	
Florabella	100% Polyester	54"	25"	Yes	No	No	37	\$123.90	
Floral Maze	73% Polyester 27% Linen	60"	6"	No	No	No	27	\$70.90	
Floral Splash	70% Cotton 30% Linen	54"	24.63"	Yes	No	No	33	\$96.90	
Floral Splendor	58% Cotton 42% Polyester	54"	31.5"	No	Yes	No	47	\$199.90	
Florentina Stripe	100% Cotton	55"	12.6"	No	Yes	No	24	\$59.90	
Flower Power	100% Cotton	54"	12.75"	No	No	No	19	\$41.90	
Flower Show	55% Linen 45% Viscose	52"	25"	No	Yes	No	33	\$99.90	
Flurry	70% Rayon 30% Polyester	58"	3.63"	Yes	No	No	27	\$73.90	
Foliage Stripe	100% Polyester	53"	7.87"	No	No	No	32	\$96.90	
Forbidden City	41% Viscose 24% Polyester 20% Cotton 15% Spun Viscose	54"	13.39"	No	Yes	No	42	\$168.90	
Forestridge	100% Polyester	55"	24.41"	No	No	No	34	\$107.90	
Formidable 130" FR Sheer	100% Polyester	130"		Yes	No	Yes	26B	\$99.90	
Fortitude Performance Vinyl	100% PVC Backing 100% Polyester	54"		Yes	No	No	33	\$112.90	
Freehand Stripe	100% Polyester FR	118"		Yes	No	Yes	33B	\$140.90	

Prices are effective as of 7/1/2026 and are subject to change without notice.

Pattern Name	Fiber Content	Vertical Fire		Retardant	Exclusive	Railroaded	Workroom	Suggested
		Width	Repeat				Price	
French Laundry Stripe Crypton®	52.84% Poly 15.95% Cot 15.38% Pre CR Cot 9.64% Ray 3.85% PCR Poly 2.34% Fla	56"	0.5"	Yes	Yes	Yes	34	\$117.90
French Quarter	100% Polyester	57"	11.75"	No	No	No	24	\$59.90
Frescatti Damask	72% Spun Viscose 28% Polyester	54"	17.25"	No	Yes	No	28	\$79.90
Fringe Benefits	41% Cotton 35% Viscose 16% Linen 8% Polyester	54"	9.25"	No	Yes	No	37	\$128.90
Fronde Sheer	54% Cotton 15% Silk 13% Lurex 12% Viscose 6% Spun Polyester	54"	11.75"	No	Yes	No	41	\$165.90
Fronterra	66% Polyester 34% Linen	57"	5.41"	No	No	No	29	\$80.90
Front-Runner - Crypton®	84% Polyester 12% Cotton 4% Acrylic	54"		Yes	No	No	29	\$87.90
Full Grain	55% PVC 40% Polyester 5% PU	54"		Yes	No	No	25	\$67.90
Full Sail	100% Cotton	60"		No	No	No	21	\$51.90
Furlong - Crypton®	100% Polyester	54"		Yes	No	No	24	\$63.90
Furocious	100% Polyester	59"	15.5"	No	Yes	No	36	\$122.90
Gaelic Thistle	Base Fabric 72% Polyester 28% Cotton Embr 100% Polyester	55"	9.45"	No	No	No	39	\$144.90
Galloway	100% Polyester	116"		Yes	No	Yes	20B	\$69.90
Garden Path	100% Cotton	54"	27"	Yes	No	No	30	\$81.90
Garland Crypton	70.68% Cotton 29.32% Recycled Polyester	54"	1.31"	Yes	No	Yes	30	\$91.90
Gatsby	50% Cotton 50% Polyester	55"	24.88"	Yes	No	No	24	\$53.90
Gauze Stripe Wide- Width Sheer	80% Viscose 20% Polyester	122"		Yes	Yes	Yes	34B	\$149.90
GEBER	100% Polyester Embroidered	54"	6.38"	No	Yes	No	24	\$60.00
GIMBLET	55% Linen 45% Rayon	54"	27"	No	No	No	31	\$62.50
Gingko	85% Polyester 15% Cotton	55"	9.45"	No	Yes	No	35	\$117.90
Gisele	52% Viscose 36% Polyester 12% Cotton	56"	27.5"	No	Yes	No	36	\$109.90
Gisele Trellis	52% Viscose 36% Polyester 12% Cotton	56"	2.2"	No	Yes	No	33	\$109.90
Giverny Garden	55% Linen 45% Viscose	52"	25"	No	Yes	No	35	\$108.90
Glacier Bay	100% Polyester	57"		Yes	Yes	No	34	\$117.90
GLEAM	100% Polyester	54"		Yes	No	No	8	\$32.90
Glenwick	100% Polyester	57"	13"	No	Yes	No	35	\$116.90
GLOVER	80% Linen 20% Cotton	48"	3.54"	No	Yes	No	29	\$164.90
Gossamer	69% Polyester 31% Linen	118"		No	Yes	Yes	23B	\$82.90
Gossett Crypton	53% Cotton 47% Polyester	54"		Yes	No	No	30	\$92.90
GOSSIP	100% Polyester	54"		Yes	No	No	22	\$53.90
Grafton	72% Polyester 28% Cotton	54"	1.25"	No	No	No	21	\$51.90
Grand Cayman	70% Viscose 30% Linen	59"	20"	No	Yes	No	29	\$79.90
Grand Prix - Crypton®	100% Polyester	54"		Yes	No	No	31	\$96.90
Grandstand - Crypton®	100% Polyester	54"		Yes	No	No	28	\$81.90
Granite	82% Polyester 18% Cotton	54"	7.8"	No	Yes	No	37	\$129.90
Granular	55% PVC 40% Polyester 5% PU	54"		Yes	No	No	25	\$67.90
Greek Key Fret	73% Polyester 27% Cotton	55"	9.45"	Yes	Yes	No	35	\$119.90
Greenbriar	73% Polyester 27% Cotton	54"	9.5"	No	Yes	No	32	\$99.90
GROUCHO	100% Linen	50"	15.75"	No	Yes	No	31	\$189.90
Grove Park	100% Polyester	55"	14"	No	Yes	No	23	\$55.90
Grove Park Damask	100% Polyester	55.12"	25"	No	Yes	No	24	\$55.90
Grove Park Garden	100% Polyester	55"	8.78"	No	Yes	No	23	\$55.90
Gulf Breeze	100% Polyester	54"		Yes	No	No	19	\$44.30
HAILEY	100% Linen	54"		Yes	No	No	24	\$62.50
Halston Stripe Crypton®	42.11% Cotton 32.64% Rayon 23.05% Polyester 2.2% Flax	55"	0.94"	Yes	Yes	Yes	38	\$148.90
Hamilton	60% Cotton 40% Polyester	54"		No	No	No	24	\$64.90
HAMM	72% Linen 27% Viscose 1% Cotton	51"	11.5"	No	Yes	No	22	\$104.90
Hammersmith Garden	100% Polyester	55"	14.75"	Yes	No	No	25	\$62.90

Prices are effective as of 7/1/2026 and are subject to change without notice.

Pattern Name	Fiber Content	Vertical Fire		Exclusive	Railroaded	Workroom Price Code	Suggested Retail	
		Width Repeat	Retardant					
HAMPDEN	75% Linen 2% Cotton 23% Rayon	52"	10"	No	Yes	No	22	\$98.90
Hampton Court	56% Linen 36% Viscose 8% Polyester	54"	30"	No	Yes	No	56	\$267.90
Harbor Club	80% Polyester 20% Linen	57"		No	Yes	No	19	\$42.90
Harborside	100% Cotton	60"		No	No	No	20	\$47.90
HARPER	82% PVC 17% Polyester 1% PU	55"		Yes	Yes	No	20	\$48.90
Harrison Stripe	57% Rayon 43% Polyester	54"	0.25"	No	No	No	30	\$94.90
Hartley Check	100% Polyester	54"	6.69"	No	No	No	32	\$100.90
Hastings	100% Polyester	116"		Yes	No	Yes	21B	\$75.90
Hatteras	71% Polyester 29% Cotton	55"		Yes	No	No	21	\$50.90
Haversham	64.21% Rayon 35.63% Cotton 0.16% Nylon	54.5"	3.75"	Yes	No	No	36	\$122.90
Hayden Stripe	91.99% Cotton 8.01% Rayon	53"	0.19"	Yes	Yes	Yes	31	\$97.90
Crypton®								
HELIOS	70% Cotton 30% Polyester	51"	12.75"	No	No	No	19	\$83.90
Hepburn Crypton	69% Polyester 31% Acrylic	55"		Yes	No	No	25	\$67.90
Heritage - Sunbrella®	97% Acrylic 3% Other	54"		Yes	No	No	38	\$149.90
Hexum	100% Cotton	54"	24.75"	No	No	No	20	\$41.90
Highland Tweed	100% Polyester	55"		Yes	No	No	22	\$56.90
Hillwood Garden	97% Polyester 3% Cotton	55"	23.5"	Yes	No	No	31	\$87.90
Hive Stripe	100% Polyester	55"	0.98"	Yes	Yes	No	40	\$166.90
Homestretch - Crypton®	100% Polyester	54"		Yes	No	No	29	\$88.90
Honey Do	55% Spun Viscose 45% Polyester	54"	2.21"	No	Yes	No	34	\$117.90
Hooper	100% Polyester	54"		Yes	No	No	31	\$96.20
HOOVER	25% Rayon 25% Polyester 25% Cotton 25% Linen	54"		No	No	No	18	\$81.90
Hourglass Stripe Wide -Width Casement	83% Polyester 17% Cotton	118"	0.5"	Yes	No	Yes	36B	\$165.90
HURRICANE	100% Linen	114"		No	No	Yes	39B	\$186.90
Hybrid - Sunbrella®	98.6% Acrylic 1.4% Polyester	54"		Yes	No	No	38	\$151.90
Hyde Park Garden	100% Cotton	55"	27.17"	No	No	No	37	\$114.90
Ice Crystals	100% Polyester	58"	1.38"	Yes	No	No	26	\$70.90
Iguana	55% PVC 40% Polyester 5% PU	54"		Yes	No	No	25	\$67.90
Ikebana	60% Polyester 40% Viscose	55"	8.25"	Yes	No	No	28	\$75.90
Illusion	100% Polyester	54"		Yes	No	No	30	\$95.90
Illusion Stripe	63% Polyester 26% Linen 11% Viscose	59"	6.5"	No	No	No	28	\$76.90
Impala	80% Polyester 20% Rayon	57"	8.25"	Yes	No	No	24	\$60.90
Imperial Fret	62% Rayon 38% Polyester	54"	3.25"	Yes	Yes	No	29	\$83.90
Imperial Gate	60% Cotton 40% Polyester	54"	1"	Yes	No	No	37	\$138.90
INDY				No	No	No		\$38.00
Inner Circle	64% Rayon 36% Polyester	54"	1.63"	No	Yes	No	36	\$131.90
INSTINCT	100% Linen	54"		No	No	No	26	\$160.20
Intarsia	70% Polyester 30% Cotton	55.12"	1.77"	No	Yes	No	27	\$78.90
Interchange	72% Polyester 28% Cotton	54"	5.5"	No	No	No	22	\$51.90
Interlock Trellis	100% Polyester	54"	9.45"	No	Yes	No	32	\$100.90
Interlock Wide-Width Casement	84% Polyester 16% Acrylic	112"		Yes	No	Yes	31B	\$128.90
Intermezzo Stripe	71.23% Olefin 28.77% Polyester	54"	3.75"	No	Yes	No	28	\$79.90
Intermittent	52% Cotton 48% Polyester	55"	9.45"	No	Yes	No	35	\$118.90
Intermittent Stripe	100% Polyester FR	118"	2.25"	Yes	No	Yes	32B	\$136.90
Intersect	100% Cotton	54"	12.38"	No	No	No	18	\$38.90
Intertwined	100% Cotton	62"	2.25"	No	No	No	16	\$35.90
Introspective	37% Cotton 25% Linen 19% Polyester	54"	9.5"	No	Yes	No	30	\$89.90
ISHTAR	100% Cotton	54"	18"	Yes	No	No	17	\$45.90
JACKSON	36% Rayon 33% Polyester 21% Polupropy	56"	1.5"	No	No	No	31	\$97.90
Jagged Ikat	67% Polyester 33% Linen	60"	6.3"	No	No	No	27	\$70.90

Prices are effective as of 7/1/2026 and are subject to change without notice.

Pattern Name	Fiber Content	Vertical Fire				Exclusive	Railroaded	Workroom	Suggested Retail
		Width	Repeat	Retardant	Price Code				
JAGUAR	55% Cotton 45% Polyester	60"		No	No	No	8	\$35.90	
Jalisco	100% Cotton	59"		No	No	No	17	\$36.90	
Jamaica	100% Polyester (UV)	55.25"	0.06"	Yes	No	Yes	37	\$143.90	
Jambi Paisley	43% Polyester 57% Linen	56"	9.45"	No	Yes	No	30	\$87.90	
Jaunty Plaid	80% Cotton 20 % Polyester	56"	4.5"	Yes	No	No	23	\$56.90	
JAVA IKAT	55% Linen 45% Rayon	54"	25.25"	Yes	No	No	27	\$69.90	
Jockey Club - Crypton®	100% Polyester	54"		Yes	No	No	27	\$76.90	
Joie de vivre	73% Polyester 27% Cotton	54"	9.45"	No	Yes	No	35	\$119.90	
Joy	35% Viscose 31% Linen 20% Cotton 14% Polyester	55"	29.63"	No	Yes	No	68	\$399.90	
Jubilent	84% Polyester 16% Viscose	54"	9.45"	No	Yes	No	34	\$113.90	
Jungle Glam	71% Polyester 29% Cotton	54"	9"	No	Yes	No	23	\$55.90	
Justin	100% Polyester	54"		Yes	No	No	27	\$76.90	
Kabuki Fret	60% Cotton 40% Polyester	54"	7.75"	No	Yes	No	40	\$152.90	
	Embroidery: 100% Viscose								
Kadiri Paisley Border	80% Polyester 20% Linen	56"	12.13"	No	Yes	No	32	\$99.90	
Kafu Trellis	79% Polyester 21% Cotton	54"	9"	No	Yes	No	39	\$149.90	
	Embroidery: 100% Viscose								
Kahana Bloom - Tommy Bahama® Sunbrella®	100% Acrylic	54"	27.5"	Yes	Yes	No	41	\$148.90	
Kapiolani Gardens IO	100% Polypropylene	54"	25.88"	Yes	No	No	36	\$114.90	
KARACHI	100% Silk	54"		No	No	No	37	\$139.90	
Kasbah	87% Rayon 11% Polyester 2% Linen	54"	13.63"	No	Yes	Yes	51	\$241.90	
Katmai	100% Polyester	57.5"	1.94"	Yes	No	Yes	23	\$59.90	
Kavali	93% Polyester 7% Linen	54"	5.25"	No	No	No	21	\$45.90	
Keaton Crypton	57% Cotton 27% Recycled Polyester 16% Polyester	54"		Yes	No	No	34	\$116.90	
Keeper of the Keys	100% Polyester	54"	18"	Yes	No	No	27	\$74.90	
KEEPSAKES	100% Polyester	54"		No	No	No	25	\$65.90	
Keepsakes	100% Polyester	54"		No	No	No	25	\$65.90	
Kelmscott Garden	100% Polyester	55"	7"	Yes	No	No	26	\$68.90	
Kelmscott Stripe	95% Polyester 5% Cotton	55"		Yes	No	No	30	\$93.90	
Kendall Herringbone	62.03% Polyester(UV) 16.37% Cotton 8.96% Olefin 7.3% Rayon 5.34% Polyester	55"	0.19"	Yes	Yes	Yes	32	\$106.90	
Crypton®									
Kenswick Plaid	100% Polyester	54"	7.75"	Yes	No	No	32	\$100.50	
KENYA	100% Cotton	54"	25.25"	No	No	No	22	\$65.30	
Key Biscayne	100% Polyester	54"	1"	Yes	No	No	21	\$51.90	
Key West	100% Polyester (UV)	55.75"	0.25"	Yes	No	Yes	31	\$99.90	
Kittani	52% Polyester 33% Cotton 15% P	54"	1.5"	Yes	Yes	No	35	\$121.90	
KLAXON		118"		No	No	No	9B	\$32.90	
Kokomo Stripe IO	100% Polyester	54"		Yes	No	No	23	\$59.90	
Komodo	55% PVC 40% Polyester 5% PU	54"		Yes	No	No	25	\$67.90	
KURA	100% Polyester	118"		Yes	No	Yes	15B	\$87.90	
La Croix	55% Linen 45% Cotton	58"		No	No	No	18	\$39.90	
La Palma Check Wide -Width Sheer	100% Polyester	124"	4.5"	Yes	Yes	Yes	31B	\$128.90	
La Rocca	55% Linen 45% Rayon	58"		No	No	No	18	\$39.90	
Lace Trellis	95% Polyester 5% Linen	57"	5.75"	No	No	No	29	\$83.90	
Laguna	100% Polyester	56"	27.5"	Yes	No	No	32	\$89.90	
Lambeth Park	55% Linen 45% Rayon	54"	27"	Yes	No	No	34	\$102.90	
Landen	95% Polyester 5% Linen	57"		Yes	Yes	No	24	\$63.90	
LANDEN	95% Polyester 5% Linen	57"		Yes	Yes	No	24	\$63.90	
LATITUDE	100% Polyester	54"		No	No	No	14	\$59.90	
Le Cirque Stripe	50% Cotton 50% Polyester	55"		Yes	No	No	22	\$53.90	
Le Mans - Crypton®	97% Polyester 3% Cotton	54"		Yes	No	No	34	\$114.90	
Leafing Out	70% Polyester 30% Rayon	58"	3.6"	Yes	No	No	27	\$71.90	
Ledoux	67% Polyester 33% Cotton	55"	4"	No	No	No	18	\$37.90	
LENNON	100% Polyester	118"		Yes	No	Yes	1B	\$32.90	
LEVINE	60% Cotton 40% Polyester	110"		No	Yes	Yes	8B	\$62.90	

Prices are effective as of 7/1/2026 and are subject to change without notice.

Pattern Name	Fiber Content	Vertical Fire					Railroaded	Workroom	Suggested Retail
		Width	Repeat	Retardant	Exclusive	Price Code			
Lilibet's Garden	100% Polyester	55"	16.75"	No	No	No	33	\$107.90	
Linen - Sunbrella®	100% Acrylic	54"		Yes	No	No	30	\$95.90	
LISETTE	100% Polyester	54"	11.75"	No	No	No	27	\$93.90	
LIVORNO	100% Polyester	118"	0.5"	Yes	No	Yes	6B	\$53.90	
LOFT	100% Polyester	55"		No	No	No	18	\$53.90	
Longchamp	100% Polyester	54"		No	No	No	32	\$105.60	
Lorelei	60% Polyester 40% Viscose	55"	0.8"	Yes	No	No	32	\$106.90	
LORETTA	100% Polyester	54"		No	No	No	12	\$49.90	
Los Alamos	100% Cotton	58"	12.63"	Yes	No	No	29	\$83.90	
Ludlow	100% Polyester FR	120"	15"	Yes	No	Yes	28B	\$112.90	
LUPIN	100% Polyester	118"	3"	Yes	No	Yes	8B	\$40.90	
LYNCH	100% Linen	50"	15.75"	No	Yes	No	30	\$177.90	
MACDONALD	100% Silk	54"	3.54"	No	Yes	No	32	\$199.90	
Machu Picchu	100% Cotton	54"	7.87"	No	Yes	No	42	\$170.90	
Mainstreet - Sunbrella®	98% Acrylic 2% Polyester	54"	0.38"	Yes	No	No	41	\$175.90	
Maison Royale	100% Polyester	54"		No	Yes	No	26	\$70.90	
Majorca IO	100% Polyester	56"	12.5"	Yes	No	No	12	\$30.90	
Makai	100% Polyester	58"	15.13"	Yes	No	No	25	\$62.90	
Manchester	93% Polyester 7% Cotton	55"	27.5"	Yes	No	No	32	\$87.90	
Mancini Crypton	68% Polyester 32% Cotton	54"	13.5"	Yes	No	Yes	31	\$95.90	
MARBELLA	100% Cotton	54"	3.38"	No	No	No	22	\$67.90	
MARMARA	44.50% Cotton 55.50% Polyester	59"	11.75"	No	No	No	27	\$97.90	
Marmont Stripe	100% Polyester FR	118"	15"	Yes	No	Yes	35B	\$155.90	
Marquee FR Velvet	100% FR Polyester	59"		Yes	No	No	30	\$94.90	
Marseille	100% Polyester	116"		Yes	No	No	23B	\$81.90	
Mazatlan	100% Polyester	116"	47"	Yes	No	Yes	27B	\$105.90	
MCBRIDE	100% Linen	50"	16"	No	No	No	24	\$119.90	
McCamey Floral	34% Viscose 28% Polyester 21% Linen 11% Cotton 6% Silk	54"	26.77"	No	Yes	No	48	\$213.90	
McCartney Crypton	53% Polyester 47% Cotton	54"	13.5"	Yes	No	Yes	33	\$102.90	
Meandering Way	100% Polyester	53"	6.4"	Yes	No	No	19	\$55.90	
MEL SCALLOPED HEM	60% Cotton 40% Polyester	118"	13.7"	No	Yes	Yes	14B	\$90.80	
Melange	79.21% Polyester 20.79% Cotton	56"	18.13"	No	Yes	No	34	\$108.90	
MELODY	52% Polyester 48% Cotton	55"		No	No	No	16	\$67.90	
Mercer Check	100% Polyester	54"	2"	Yes	No	No	34	\$119.70	
Merritt	55% PVC 40% Polyester 5% PU	54"	1.06"	Yes	No	No	25	\$67.90	
Metro Grid	55% PVC 40% Polyester 5% PU	54"	2"	Yes	No	No	25	\$67.90	
Metro Stripe	100% Cotton	54"	1.25"	Yes	No	No	27	\$77.90	
Metropolis Trellis	100% Polyester	54"	21.5"	No	Yes	No	36	\$119.90	
Ming	70% Viscose 30% Linen	59"	23.5"	No	Yes	No	29	\$79.90	
Mingle	60% Polyester 21% Cotton 19% Rayon	57.25"	6.5"	Yes	No	No	36	\$122.90	
Misha	100% Polyester	57"	2"	Yes	No	No	29	\$89.90	
MISSISSIPPI	100% Polyester	122"	2.1"	Yes	No	No	25B	\$92.90	
Mocambo	100% Cotton	54"	9"	Yes	No	No	25	\$83.90	
Modern Lily	77% Polyester 23% Viscose	54"	7.48"	No	Yes	No	36	\$125.90	
Moderna Trellis	100% Cotton	54"	4.5"	Yes	No	No	21	\$47.90	
Mondrian	57% Rayon 43% Polyester	58"	2.5"	No	No	No	36	\$134.90	
Monet Floral	60% Linen 40% Cotton	53"	25"	No	Yes	No	33	\$99.90	
MONGOOSE		118"	0.88"	No	No	No	20B	\$90.90	
Montague Chevron	100% Polyester	54"	0.5"	No	No	No	31	\$96.20	
Monte Carlo	100% Polyester	57"		No	Yes	No	20	\$47.90	
Monteleone	64% Polyester 32% Cotton 4% Linen	56"	9.45"	No	Yes	No	32	\$99.90	
Montezuma Stripe	100% Cotton	56"	0.38"	No	No	No	22	\$53.20	
Moonbeam Wide-Width Sheer	75% Polyester 20% Linen 5% Polyamide	126"		Yes	Yes	Yes	32B	\$138.90	
MOORISH	100% Polyester	106"	11.6"	Yes	No	Yes	20B	\$89.90	
Moreno Crypton	80% Cotton 20% Polyester	54"		Yes	No	No	37	\$141.90	

Prices are effective as of 7/1/2026 and are subject to change without notice.

Pattern Name	Fiber Content	Vertical Fire		Retardant	Exclusive	Railroaded	Workroom Price Code	Suggested Retail
		Width	Repeat					
Mosaic	42% Linen 28% Cotton 21% Viscose 9% Polyester	54"	3.75"	No	Yes	No	59	\$304.90
Mosaic Trellis	50% Polyester 50% Cotton	54"	4"	No	Yes	No	28	\$79.90
Mottle	100% Polyester	54"	21.06"	No	No	No	33	\$96.90
Mukkara	100% Polyester	56"	29.25"	Yes	Yes	Yes	30	\$79.90
MURRAY	100% Polyester	118"		Yes	No	Yes	14B	\$90.90
MYERS	100% Polyester	52"	15"	No	No	No	16	\$63.70
Mystic Diamond	90% Viscose 10% Silk	56"	21.63"	No	Yes	No	51	\$236.90
Na Pali Garden IO	100% Polyester	56"	12.5"	Yes	No	No	12	\$30.90
Nassau	100% Polyester	116"		Yes	No	Yes	21B	\$75.90
Nassau Trellis IO	100% Polyester	54"	12.6"	Yes	No	No	24	\$59.90
Neapolitan Stripe	77.66% Rayon 22.34% Polyester	54"	7.25"	No	Yes	Yes	32	\$100.90
Nefertiti	63% Acrylic 30% Polyester 7% Cotton	55"	14"	Yes	No	No	34	\$113.90
Nemo	60% Polyester 20% Acrylic 20% Cotton	55"	13.75"	Yes	No	No	33	\$104.90
Nightfall	100% Polyester	60"		Yes	No	No	31	\$99.90
NINTU	100% Polyester	54"	2"	No	No	No	14	\$59.90
Nocturne	100% Polyester Face 100% Acrylic Backing	55"		Yes	No	No	28	\$81.90
Nolita Stripe	100% Polyester FR	120"	7.5"	Yes	No	Yes	36B	\$166.90
Nolita Trellis	74% Recycled Polyester 26 Polyester	55"	9.84"	No	No	No	32	\$99.90
Nom de Plume	80% Polyester 20% Linen Embroidery: 100% Polyester	59"	15.38"	No	Yes	No	38	\$139.90
NORMAN	75% Linen 2% Cotton 23% Rayon	52"	3.54"	No	Yes	No	26	\$131.90
Notting Hill	63% Rayon 37% Polyester	54"	3"	Yes	Yes	No	35	\$116.90
Nouvelle Nouveau	100% Polyester	55"	4.33"	No	No	No	32	\$99.90
Oakville Trellis	56% Linen 29% Polyester 15% Cotton	54"	9.5"	No	Yes	No	31	\$94.90
Obscura	55% Linen 45% Viscose	52"	25"	No	Yes	No	33	\$101.90
Ocean Breeze	100% Polyester	54"		Yes	No	No	21	\$50.50
Ocean Drive - FibreGuard®	100% Polyester	58"		Yes	Yes	No	28	\$80.90
Ogee Stipple	76% Polyester 24% Spun Viscose	54"	11.02"	No	Yes	No	37	\$128.90
Ogee Trellis	100% Polyester	57"	2"	Yes	No	No	28	\$82.90
OJAI STRIPE	100% Cotton	54"		No	No	No	22	\$71.90
OLIVE GROVE	100% Polyester	118"		Yes	No	Yes	1B	\$32.90
Ombre Horizons - Tommy Bahama® Sunbrella®	100% Acrylic	54"	7.25"	Yes	Yes	No	38	\$138.90
Ombre Stripe	80.31% Rayon 19.69% Polyester	54"	13.5"	No	Yes	Yes	31	\$94.90
On the Fringe	58% Cotton 42% Polyester	54"	7.87"	No	Yes	No	39	\$148.90
O'NEAL	100% Linen	50"	15.74"	No	Yes	No	31	\$189.90
Ontario	100% Cotton	55.5"		No	No	No	17	\$36.90
OPAQUE	100% Polyester	118"		Yes	No	Yes	10B	\$45.90
Optima	55% PVC 40% Polyester 5% PU	54"		Yes	No	No	25	\$67.90
Orbits	55% PVC 40% Polyester 5% PU	54"	6"	Yes	No	No	26	\$67.90
Organic Cotton Sateen	100% Organic Cotton	60"		No	No	No	15	\$31.90
Oslo Lattice	100% Polyester	58"	11"	Yes	No	No	24	\$60.90
Otomi	84% Polyester 16% Cotton	58"	28.13"	No	Yes	No	44	\$175.90
Overland Plaid	100% Cotton	55"	3.38"	Yes	No	No	26	\$67.90
Oxford	100% Polyester	55.5"		Yes	No	No	32	\$105.90
Oxford Stripe	100% Polyester	54"		No	No	No	34	\$117.30
Paddington	61% Cotton 28% Olefin 11% Polyester	54"	1.75"	No	No	Yes	30	\$90.90
Pago Pago IO	100% Polyester	54"	8.38"	Yes	No	No	24	\$59.90

Prices are effective as of 7/1/2026 and are subject to change without notice.

Pattern Name	Fiber Content	Vertical Fire		Exclusive	Railroaded	Workroom Price Code	Suggested Retail	
		Width Repeat	Retardant					
Painterly Check	45% Cotton 33% Polyester 22% Spun Viscose	54"	15.35"	No	Yes	No	36	\$125.90
Painterly Stripe Wide-Width Sheer	82% Polyester 18% Cotton	118"		Yes	No	Yes	30B	\$122.90
Palais Royale Mohair Velvet	100% Mohair face 100% Polyester backing	54"		Yes	No	No	65	\$371.90
Palermo	100% Polyester	116"		Yes	No	Yes	20B	\$69.90
Palladium	55% Linen 45% Cotton	54"	11.81"	No	Yes	No	45	\$199.90
Palm Garden	59% Polyester 41% Viscose	54"	31.5"	No	Yes	No	43	\$161.90
Palm Grove	82.69% Rayon 17.31% Nylon	55"	32.25"	No	Yes	No	41	\$151.90
Palm Springs	100% Polyester	54"	28.25"	Yes	No	No	35	\$102.90
Palomar Paisley	55% Linen 45% Viscose	53"	25.2"	No	Yes	No	37	\$126.90
PAMPLONA	55% Linen 45% Viscose	54"	27"	Yes	No	No	31	\$88.90
Panache	69.53% Rayon 21.26% Polyester	55"	13.5"	Yes	No	No	30	\$85.90
Papago	58% Cotton 42% Polyester Embroidery: 100% Viscose	54"	15"	No	Yes	No	38	\$143.90
Papara - Tommy Bahama® Sunbrella®	100% Acrylic	54"	8.13"	Yes	Yes	No	45	\$199.90
Paradise Found	46% Linen 30% Cotton 19% Viscose	54"	25"	No	Yes	No	51	\$236.90
Paradise Garden	100% Polyester	55"	18.31"	No	No	No	33	\$107.90
PARAMOUNT	63.8% Viscose 36.2% Polyester	54"	12.75"	Yes	No	No	32	\$100.90
Park Avenue Stripe	100% Polyester	54"		Yes	No	No	19	\$56.90
Park Lane Wide-Width Sheer	95% Polyester 5% Cotton	118"		Yes	Yes	Yes	31B	\$128.90
Parrot Clay	85% Polyester 15% Cotton	54"	51"	Yes	No	No	29	\$65.90
Pascal	100% Polyester	55"	8.58"	Yes	No	No	27	\$74.90
Pascale	100% Polyester	55"	14.96"	No	No	No	32	\$99.90
Paseos	57% Polyester 43% Cotton	54"	8.75"	No	Yes	No	27	\$70.90
Passementerie	86% Viscose 11% Silk 3% Plastic	54"	30"	No	Yes	No	68	\$372.90
Passementerie Stripe	36.81% Rayon 32.15% Polyester 28% Cotton	57.25"	1.63"	Yes	No	Yes	35	\$122.90
PASTA	100% Polyester	60"		Yes	No	No	11	\$45.90
Pathway Trellis	84% Polyester 16% Spun Viscose	53"	6.3"	No	Yes	No	37	\$131.90
Pave Diamonds	60% Rayon 40% Polyester	58"	12.25"	No	No	No	37	\$132.90
PEARL STRANDS	100% Polyester	53"	8"	No	No	No	25	\$84.90
PENTEL	67% Viscose 25% Silk 8% Acrylic	55"	21"	No	Yes	No	31	\$173.90
Penthouse	51% Viscose 49% Polyester	58"		No	Yes	No	22	\$55.90
Peony Bird	73% Rayon 15% Cotton 12% Nylon	56"	26.5"	No	Yes	No	45	\$188.90
Per Se	100% Polyester	122"		Yes	No	Yes	30B	\$123.90
PERCEPTION	100% Silk	54"		No	No	No	37	\$139.90
Perception	100% Silk	54"		No	No	No	37	\$139.90
Peretti	35% Linen 30% Viscose 23% Cotton 12% Polyester	57"	1.5"	No	Yes	No	59	\$314.90
Perot Trellis	100% Polyester	57"	3"	Yes	No	No	25	\$64.90
Petal Pop	63% Polyester 26% Linen 11% Viscose	59"	7"	No	No	No	28	\$76.90
Petite Faux Bois	65% Rayon 35% Polyester	54"	8.5"	Yes	Yes	No	35	\$116.90
Petite Pinstripe Wide-Width Sheer	83% Polyester 17% Cotton	118"		Yes	No	Yes	31B	\$128.90
Phantom	100% Polyester	55"		Yes	No	No	30	\$94.90
PHLOX	100% Polyester	118"		Yes	No	Yes	10B	\$45.90
Picardie Trellis	32% Viscose 30% Polyester 26% Linen 12% Rayon	55"	5"	Yes	No	No	33	\$106.90
Pickford	94% Polyester 6% Nylon	55"		Yes	No	No	19	\$44.90
PICKWICK CHECK	100% Cotton	54"	2.31"	Yes	No	No	21	\$67.90
Pied a Terre Rayon Velvet	100% Rayon Face with 67% Cotton 33% Polyester Backing	54"		Yes	No	No	37	\$136.90

Prices are effective as of 7/1/2026 and are subject to change without notice.

Pattern Name	Fiber Content	Vertical Fire		Retardant	Exclusive	Railroaded	Workroom Price Code	Suggested Retail
		Width	Repeat					
Pietro Paisley	71% Polyester 28% Cotton 1% Lycra	53"	23.5"	No	Yes	No	23	\$50.90
Pinata	68% Polyester 32% Cotton	55"	28.63"	No	Yes	No	37	\$114.90
PINNACLE	78% Polyester 22% Cotton	54"	14.7"	No	No	No	25	\$62.90
Pintuck Stripe	100% Polyester	118"		Yes	No	Yes	27B	\$105.90
Pique Trellis	57.1% Viscose 42.9% Polyester	55"	1.57"	Yes	No	No	28	\$84.90
Pismo Beach IO	100% Polyester	56"	1"	Yes	No	No	11	\$30.90
PITTSFIELD	84% Polyester 16% Cotton	52"	12.6"	No	Yes	No	22	\$100.90
Pivotal	100% Polyester	56.25"	7"	Yes	No	No	29	\$84.90
Platform - Sunbrella®	100% Acrylic	54"		Yes	No	No	38	\$149.90
PLATINUM	100% Combed Cotton	54"		No	No	No	21	\$67.90
PLUSH	100% Polyester	54"		No	No	No	9	\$39.90
Poipu Plaid IO	55% Polypropylene 45% Polyester	54"	7"	Yes	No	Yes	31	\$92.90
Poitier Crypton	100% Polyester	55"		Yes	No	No	28	\$81.90
POLAROID	100% Polyester	118"	0.58"	Yes	No	Yes	31B	\$127.90
POMME DE TERRE	100% Polyester	118"		Yes	No	Yes	17B	\$92.90
Pompadour Stripe	Base 59% Cotton 41% Polyester Emb. 70% Viscose 20% Spun Polyester 10% Cotton	58"	11.61"	No	Yes	No	42	\$172.90
Portside	100% Cotton	60"		No	No	No	18	\$41.90
POSE	100% Polyester	118"	11.75"	No	No	Yes	19B	\$64.50
Positano Damask	37% Cotton 25% Linen 19% Polyester 19% Viscose	54"	18"	No	Yes	No	42	\$172.90
Preakness - Crypton®	88% Polyester 12% Nylon	54"		Yes	No	No	27	\$79.90
Precipice	55% Viscose 25% Cotton 10% Acrylic 10% Silk	52"	6.25"	No	Yes	No	46	\$206.90
Prelude	100% Polyester	59"		Yes	Yes	No	17	\$36.90
PRESLEY	100% Polyester	118"	0.5"	Yes	No	Yes	6B	\$53.90
Primrose Garden	35% Cotton 27% Spun Polyester 22% Viscose 16% Linen	55"	15.35"	No	Yes	No	36	\$127.90
Prismatic	100% Polyester	57"	6.88"	Yes	No	No	29	\$81.90
Protea Garden	100% Cotton	54"	26.5"	No	No	No	34	\$102.90
Puerto Vallarta IO	100% Polypropylene	54"	13.25"	Yes	No	No	35	\$114.90
Purr	61% Polyester 39% Rayon	54"	14.5"	Yes	Yes	No	36	\$122.90
Pyramids	71% Polyester 28% Cotton 1% Lycra	53"	11.88"	No	Yes	No	22	\$50.90
Python	55% PVC 40% Polyester 5% PU	54"		Yes	No	No	25	\$67.90
Quarry Find	85% Cotton 15% Linen	54"	26.25"	No	No	No	26	\$62.90
Queen's Garden	50% Cotton 50% Polyester	55"	24.75"	Yes	No	No	24	\$53.90
Quentin	100% Polyester	110"		Yes	No	Yes	19B	\$66.90
Quigley	100% Polyester	110"		Yes	No	Yes	21B	\$71.90
QUILL	62% Rayon 38% Polyester	53"	4.7"	No	Yes	No	30	\$89.90
Quilt Craft	92% Polyester 8% Rayon	54"	2.5"	Yes	No	No	32	\$107.90
Quiltcraft	50.5% Cotton 49.5% Polyester	54"	3.15"	No	Yes	No	40	\$154.90
Quilting Bee	50.5% Cotton 49.5% Polyester	54"	2.36"	No	Yes	No	38	\$148.90
Quinella - Crypton®	92% Polyester 8% Linen	54"		Yes	No	No	24	\$61.90
Quinton	100% Polyester	110"		Yes	No	Yes	21B	\$71.90
Quitman	100% Polyester	110"	7.2"	Yes	No	Yes	21B	\$71.90
R601	100% Silk	55"	17.5"	No	Yes	No	45	\$222.90
Radiate	100% Polyester	56"	4.5"	Yes	No	No	24	\$57.90
Raku	91% Polyester 9% Cotton	53"	14.75"	Yes	No	No	30	\$89.90
Rallycross - Crypton®	100% Polyester	54"		Yes	No	No	25	\$65.90
Ramone Crypton	70% Cotton 30% Polyester	54"	8.75"	Yes	No	Yes	29	\$81.90
Rangoon Stripe	54.82% Cotton 45.18% Polyester	56"	13.25"	Yes	Yes	Yes	29	\$81.90
Rapallo Trellis	65% Viscose 22% Polyester 13% Cotton	56"	2.25"	No	Yes	No	33	\$108.90
Ravi	65% Polyester 35% Cotton	54"	0.63"	Yes	No	No	27	\$79.90
Razzle Dazzle	100% Polyester	55"		No	No	No	27	\$79.90
Rendezvous	100% Polyester	54"	3.11"	Yes	Yes	No	32	\$101.90

Prices are effective as of 7/1/2026 and are subject to change without notice.

Pattern Name	Fiber Content	Vertical Fire					Railroaded	Workroom	Suggested Retail
		Width	Repeat	Retardant	Exclusive	Price Code			
Reverb Stripe Crypton®	53% Pre-Cr Cotton 47% PCR Polyester	57"	0.13"	Yes	Yes	Yes	30	\$92.90	
Rialto	100% Polyester	58"		No	Yes	No	19	\$43.90	
Rialto Damask	100% Polyester	56"	33.47"	No	No	No	39	\$134.90	
Rialto Diamond	100% Polyester	54"	1.77"	No	No	No	36	\$134.90	
Ric Rac	47% Acrylic 42% Polyester 11% Cotton	55"	2.87"	Yes	No	No	30	\$92.90	
Ricci Trellis	92% Polyester 8% Linen	58"	7.75"	No	No	No	37	\$132.90	
Rimple	29% Spun Viscose 27% Polyester 22% Cotton 22% Viscose	54"	24.61"	No	Yes	No	38	\$131.90	
Ring Out	100% Polyester	55"	1.25"	No	No	No	15	\$32.90	
Ring Toss	60% Polyester 30% Cotton 10% Linen	55"	0.75"	No	Yes	No	32	\$105.90	
Ring-A-Ling	100% Polyester FR	118"	7.25"	Yes	No	Yes	38B	\$176.90	
Rio Arriba	46% Polyester 25% Rayon 16% Cotton 13% Nylon	59"	7.38"	No	Yes	Yes	36	\$127.90	
Rio Vista	81% Spun Viscose 19% Polyester	54"	9.25"	No	Yes	No	38	\$141.90	
Ripple	75% Polyester 25% Linen	59"	23"	Yes	No	No	26	\$63.90	
Ripple Stripe Wide- Width Sheer	100% Polyester	120"		Yes	Yes	Yes	32B	\$133.90	
RITZ DAMASK	100% Polyester	57"	17.75"	Yes	No	No	24	\$78.90	
Ritz Velvet	100% Polyester	57"		Yes	No	No	22	\$53.90	
Rivo Alto - FibreGuard®	100% Polyester	59"	7.88"	Yes	Yes	No	31	\$91.90	
Rizzolli	51% Rayon 49% Polyester	54"	0.75"	Yes	Yes	No	32	\$105.90	
RM Designer Royal Batiste	100% Polyester	118"		Yes	No	No	6B	\$27.90	
RM Designer Voile	100% Polyester	118"		Yes	No	No	4B	\$15.90	
Roar	60% Rayon 40% Polyester	58"	14.25"	No	No	No	37	\$132.90	
Romanza	70% Viscose 30% Linen	59"	24.5"	No	Yes	No	29	\$79.90	
Romesco Trellis	100% Polyester Embroidery 100% Polyester Base	54"	4.75"	No	Yes	No	37	\$130.90	
Rondelle	80% Cotton 20% Rayon	54"	4.33"	Yes	Yes	No	34	\$109.90	
Room With A View Wide-Width Casement	100% Polyester	110"	0.5"	Yes	Yes	Yes	34B	\$149.90	
Roped In	64% Polyester 32% Cotton 4% Linen	56"	9.13"	No	Yes	No	27	\$73.90	
Rosemary Garden	63% Cotton 37% Polyester	53"	7.28"	No	No	No	37	\$128.90	
ROWAN	83% PVC 16% Polyester 1% PU	55"		Yes	Yes	No	20	\$48.90	
Royal Fret	60% Spun Viscose 34% Filament Polyester	54"	9.2"	No	Yes	No	41	\$163.90	
Royalton FR Strie Sateen	100% IFR Polyester	54"		Yes	No	No	33	\$109.90	
RUMAKI	100% Cotton	54"	18"	Yes	No	No	20	\$57.90	
S330	100% Silk	54"		No	No	No	38	\$144.90	
S333	100% Silk	54"	12"	No	No	No	45	\$199.90	
S336	100% Silk	54"	10.25"	No	No	No	42	\$168.90	
S339	100% Silk	53"	15.12"	No	Yes	No	59	\$309.90	
S342	100% Silk	53"	12.45"	No	Yes	No	55	\$277.90	
Sailaway	100% Organic Cotton	60"		No	No	No	22	\$55.90	
Sailcloth - Sunbrella®	100% Acrylic	54"		Yes	No	No	38	\$151.90	
Saint Tropez	100% Polyester	59"		No	Yes	No	21	\$51.90	
Samarkand	40% Cotton 40% Viscose 20% Polyester	55"	34.65"	No	Yes	No	41	\$147.90	
San Torini	85% Polyester 15% Rayon	58.27"	19.75"	No	Yes	No	25	\$59.90	
San Torini Stripe	85% Polyester 15% Rayon	58.27"	5.25"	No	Yes	No	24	\$59.90	
Sanremo Scroll	67% Viscose 20% Polyester 13% Cotton	56"	18.38"	No	Yes	No	34	\$108.90	
SARAYI	58% Polyester 42% Cotton	54"	5"	Yes	No	No	24	\$77.90	

Prices are effective as of 7/1/2026 and are subject to change without notice.

Pattern Name	Fiber Content	Vertical Fire					Railroaded	Workroom	Suggested Retail
		Width	Repeat	Retardant	Exclusive	Price Code			
Saville Row Stripe Crypton®	45.33% Rayon 30.17% Polyester(uv) 16.03% Cotton 5.43% Polyester 1.97% PIR P	57"	0.06"	Yes	Yes	Yes	36	\$128.90	
Savoir Faire Performance Velvet	100% Polyester	54"		Yes	No	No	35	\$97.90	
Savoy Stripe	55% Spun Viscose 45% Polyester	56"		No	No	No	36	\$132.90	
Savoy Velvet	100% Polyester	118"		Yes	No	Yes	25B	\$93.90	
Scraffitti	35% Cotton 29% Linen 23% Viscose 13% Polyester	56"	7.25"	No	Yes	No	57	\$289.90	
Scroll Dance	73% Polyester 27% Cotton	54"	9.5"	No	Yes	No	32	\$99.90	
Sea Breeze	100% Polyester	54"		Yes	No	No	21	\$50.50	
Seaspray Texture IO	100% Polypropylene	54"	0.5"	Yes	No	No	32	\$107.90	
Secret Garden Floral	58% Polyester 42% Viscose	55"	6.1"	No	Yes	No	37	\$129.90	
SEINFELD	80% Linen 18% Viscose 2% Cotton	54"	15"	No	Yes	No	23	\$112.90	
SEISMIC	100% Polyester	58"	11.81"	No	No	No	26	\$89.90	
SENEGAL	100% Cotton Embroidery 100% Spun Polyester Base	52"	7.5"	Yes	No	No	23	\$75.90	
Serenade	66% Cotton 34% Polyester	54"		Yes	No	No	28	\$80.90	
Serendipitoua	85% Polyester 15% Cotton	56"	12.5"	No	Yes	No	30	\$85.90	
Serengeti	48.47% Cotton 34.38% Polyester 17.15 Rayon	56"	25"	No	Yes	No	42	\$160.90	
Serenity	100% Polyester	54"	6"	Yes	No	No	32	\$98.90	
Seychelles	100% Polyester (UV)	55.5"	0.06"	Yes	No	Yes	31	\$99.90	
Shadow - Sunbrella®	100% Acrylic	54"		Yes	No	No	25	\$67.90	
Shadowbox	74% Polyester 13% Viscose 13% Linen	57"	0.5"	Yes	Yes	No	36	\$128.90	
Sheer Tempo - Tommy Bahama®	100% Acrylic	59"	1.63"	Yes	Yes	No	33	\$110.90	
Sunbrella®									
Shere Khan	43% Rayon 29% Cotton 28% Polyester	55"	27.38"	Yes	No	No	41	\$151.90	
SHERLOCK	100% Cotton	54"	1.42"	No	No	No	27	\$100.90	
Shibori Diamond - Tommy Bahama®	100% Acrylic	54"	9.38"	Yes	Yes	No	38	\$137.90	
Sunbrella®									
Shimmer	55% PVC 40% Polyester 5% PU	54"		Yes	No	No	25	\$67.90	
Sho Sho Shan	47% Acrylic 42% Polyester 11% Cotton	55"	5"	Yes	No	No	31	\$92.90	
Shoji Fret	37% Polyester 36% Rayon 27% Cotton	54"	1.75"	Yes	Yes	No	36	\$132.90	
Shoreline Stripe IO	100% Polypropylene	54"	13.88"	Yes	No	Yes	35	\$114.90	
SHRUB	100% Polyester	118"	0.13"	Yes	No	Yes	5B	\$32.90	
Sidewinder	100% Polyester	54"	9.65"	Yes	Yes	No	28	\$79.90	
SILHOUETTES	44% Polyester 56% Viscose	54"	6.13"	No	Yes	No	15	\$58.90	
Silken Strands	55% PVC 40% Polyester 5% PU	54"		Yes	No	No	25	\$67.90	
Silverstone - Crypton®	100% Polyester	54"		Yes	No	No	26	\$71.90	
Single File Wide- Width Sheer	54% Polyester 28% Acrylic 18% Cotton	124"		Yes	Yes	Yes	32B	\$133.90	
Sketch	100% Polyester	54"	12.5"	No	Yes	No	34	\$111.90	
Sketchy	40.56% Cotton 34.80% Polyester 24.64% Ole	57"	4.81"	Yes	No	Yes	27	\$73.90	
Smart Move	100% Polyester	55"		Yes	No	No	23	\$59.90	
Snuggle Performance Boucle	95% Polyester 5% Acrylic	55"		Yes	No	No	31	\$100.90	
Soho Chic	83% Vis 9% Silk 8% Acrylic	50"	17.25"	No	Yes	No	49	\$224.90	
Soiree	100% Polyester	57.48"		Yes	Yes	No	29	\$89.90	
Something's Fishy IO	100% Polypropylene	54"	4.13"	Yes	No	No	35	\$114.90	
Sondheim Crypton	47.01% Polyester 43.72% Cotton 9.27% Recycled Polyester	54"	6.75"	Yes	No	Yes	28	\$77.90	

Prices are effective as of 7/1/2026 and are subject to change without notice.

Pattern Name	Fiber Content	Vertical Fire					Railroaded	Workroom	Suggested Retail
		Width	Repeat	Retardant	Exclusive	Price Code			
Sotto	100% Cotton	62"	1"	No	No	No	16	\$35.90	
Spangle Stripe	Base 70% Viscose 30% Linen Emb. 70% Spun Polyester 30% Viscose	54"	0.98"	No	Yes	No	39	\$158.90	
Sparkle	90% Polyester 10% Metallic Yarn	54"	28.5"	No	Yes	No	35	\$103.90	
Spectrum - Sunbrella®	100% Acrylic	54"		Yes	No	No	29	\$75.90	
Spectrum Ombre Crypton®	60.43% Rayon 23.51% Cotton 16.06% Polyester	56"	28.69"	Yes	Yes	Yes	42	\$156.90	
Spezia	65% Viscose 22% Polyester 13% Cotton	56"	2.75"	No	Yes	No	33	\$108.90	
Spirograph	50% Polyester 40% Cotton 10% Linen	58"	7.75"	No	No	No	29	\$83.90	
Splendide	60% Cotton 40% Polyester	54"	11.18"	No	Yes	No	43	\$181.90	
Sporadic	95% Polyester 5% Cotton	57"	1"	Yes	No	No	24	\$64.90	
Spring Song	85% Polyester 15% Linen	56"	12.38"	No	Yes	No	30	\$89.90	
SPRINGFIELD	100% Polyester	118"		Yes	No	Yes	4B	\$45.90	
Spritz Stripe	100% Polyester FR	118"		Yes	No	Yes	30B	\$125.90	
Square Illusion	96% Polyester 4% Linen	59"	6.18"	No	No	No	26	\$67.90	
Square Pegs	73% Polyester 27% Cotton	54"	9"	No	Yes	No	30	\$89.90	
St. Honoré Damask	65% Viscose 21% Spun Polyester	59"	19.63"	No	Yes	No	39	\$141.90	
St. Regis Stripe Crypton®	48.14% Polyester 27.16% Rayon 24.7% Polyester (UV)	55"	0.06"	Yes	Yes	Yes	30	\$94.90	
STANHOPE	62% Cotton 38% Polyester	54"	14.25"	Yes	No	No	27	\$96.90	
STANHOPE STRIPE	57% Polyester 43% Viscose	54"		Yes	No	No	28	\$82.90	
Star Dance IO	57% Polypropylene 43% Polyester	54"	8"	Yes	No	No	31	\$94.90	
Stardust	100% Polyester	54"		Yes	No	No	28	\$80.90	
Starglow	100% Polyester	59"	6.25"	Yes	No	No	27	\$70.90	
Statler	100% Polyester	56"	4.5"	Yes	No	No	23	\$53.90	
Steeplechase - Crypton®	85% Polyester 10% Acrylic 5% Linen	54"		Yes	No	No	28	\$84.90	
STEM	100% Cotton	54"	27"	No	No	No	21	\$85.90	
Step Down	70% Polyester 30% Cotton	55.12"	1.77"	No	Yes	No	27	\$78.90	
Step Up Trellis	61% Polyester 39% Rayon	54"	3"	Yes	Yes	No	34	\$110.90	
STEPPENWOLF	100% Polyester	118"		Yes	No	Yes	3B	\$42.90	
STIPPLE	100% Polyester	57"	3.7"	Yes	No	No	35	\$118.90	
Stitch in Time	53% Rayon 30% Polyester 12% Linen 3% Cotton 1% Flax 1% Nylon	55"	5.88"	No	Yes	No	35	\$116.90	
Stitchery Trellis	60% Polyester 40% Cotton Embroidery: 100% Polyester	55"	11.5"	No	Yes	No	36	\$127.90	
STITCHWORK STRIPE	100% Cotton	54"		Yes	No	No	24	\$83.90	
Stockard	55.02% Cotton 44.98% Polyester	54"	0.69"	Yes	No	No	34	\$114.90	
Stockholm	100% Polyester	116"	15"	Yes	No	Yes	21B	\$75.90	
Stockton Stripe	37% Cotton 25% Linen 19% Polyester	54"		No	Yes	Yes	36	\$130.90	
Stonebriar	100% Polyester	59"		No	Yes	No	19	\$43.90	
Stonegate	55% PVC 40% Polyester 5% PU	54"		Yes	No	No	25	\$67.90	
STONELEIGH TRELLIS	32% Viscose 28% Polyester 28% Linen 10% Rayon	54"	15.2"	Yes	No	No	36	\$125.90	
Straight & Narrow	94.13% Cotton 5.87% Flax	52"	2"	No	Yes	No	36	\$135.90	
Straight Arrow	86% Cotton 14% Polyester	55.25"	0.25"	Yes	No	Yes	21	\$51.90	
Strand - FibreGuard®	100% Polyester	59"	2.63"	Yes	Yes	No	30	\$91.90	
Strand Stripe	100% Polyester FR	118"		Yes	No	Yes	33B	\$140.90	
Strata	76% Viscose 24% Linen	55"		Yes	Yes	No	26	\$73.90	
Stratosphere	33% Viscose 27% Polyester 27% Linen	58"	11.75"	Yes	No	No	32	\$99.90	
Streisand Crypton	100% Polyester	54"	1.12"	Yes	No	Yes	34	\$119.90	
Striated Stripe	100% Polyester FR	118"		Yes	No	Yes	30B	\$121.90	

Prices are effective as of 7/1/2026 and are subject to change without notice.

Pattern Name	Fiber Content	Vertical Fire					Railroaded	Workroom	Suggested
		Width	Repeat	Retardant	Exclusive	Price Code		Retail	
String Along	100% Polyester	53"	9.5"	Yes	No	No	27	\$95.90	
Summer Breeze	100% Polyester	54"		Yes	No	No	27	\$75.10	
Sunset	100% Polyester	54"		Yes	No	No	27	\$75.90	
Suri Ikat	100% Cotton	62"	11.75"	No	No	No	16	\$35.90	
Sutash	73% Polyester 27% Cotton	54"	18.88"	No	Yes	No	35	\$114.90	
Sutton	100% Polyester	57"		No	Yes	No	22	\$54.90	
SWINDON		118"		No	No	No	5B	\$25.90	
Swirl-A-Way	37% Cotton 25% Linen 19% Polyester 19% Viscose Embroidery: Polyester	54"	6.38"	No	Yes	No	33	\$107.90	
Swirling Stripe Wide-Width Casement	35% Acrylic, 33% Viscose 22% Polyester 10% Cotton	120"		Yes	No	Yes	34B	\$149.90	
Swivel	100% Polyester	54"	9.65"	Yes	Yes	No	29	\$81.90	
Sydney	100% Polyester	116"	21"	Yes	No	Yes	21B	\$75.90	
TABBY	100% Cotton	54"	0.4"	No	No	No	24	\$83.90	
Tahiti	66.55% Polyester (UV)27.82% Olefin (UV) 5.63% PCR Polyester (UV)	55"	2.31"	Yes	No	Yes	31	\$99.90	
Talladega - Crypton®	100% Polyester	54"		Yes	No	No	25	\$68.90	
Tampico	81% Cotton 14% Polyester 4% Rayon 1% Metallic	58"	9.25"	No	Yes	No	34	\$108.90	
Tandy Crypton	100% Polyester	55"	13.75"	Yes	No	No	30	\$89.90	
Tangier	79% Polyester 21% Cotton Embroidery: 100% Viscose	54"	9.38"	No	Yes	No	34	\$112.90	
Technicolor Stripe	100% Polyester	58"	18.43"	No	Yes	No	24	\$59.90	
Techno	55% PVC 40% Polyester 5% PU	54"		Yes	No	No	25	\$67.90	
Termiz Ikat	35% Viscose 33% Cotton 16% Linen 16% Polyester	56"	9"	No	Yes	No	37	\$131.90	
Tetley	100% Polyester	56"		No	No	No	22	\$56.90	
Textura Wide-Width Casement	68% Polyester 32% Viscose	124"		Yes	No	Yes	36B	\$165.90	
Thatch	55% PVC 40% Polyester 5% PU	54"		Yes	No	No	25	\$67.90	
Thatched Hut IO	100% Polypropylene	54"	10"	Yes	No	No	32	\$96.90	
The Right Track	85% Cotton 15% Linen	54"	8"	No	No	No	26	\$66.90	
Thebes	63% Acrylic 30% Polyester 7% Cotton	55"	1.23"	Yes	No	No	33	\$113.90	
Thunderhill - Crypton®	100% Polyester	54"		Yes	No	No	26	\$74.90	
Tiberon Stripe	52% Polyester 48% Cotton Embroidery: 100% Viscose	54"	9.25"	No	Yes	No	39	\$146.90	
Tidbits	35% Polyester 54% Spun Viscose 11% Cotton	54"	1"	No	Yes	No	31	\$100.90	
Tiddly	100% Polyester	55"	1.45"	No	Yes	No	24	\$61.90	
Tie Die	100% Cotton	54"	13.5"	Yes	No	No	22	\$50.90	
Tie Dye Trellis	100% Polyester	63"	13.78"	No	Yes	No	32	\$96.90	
Timber	71% Polyester 28% Cotton 1% Lycra	54"	26.75"	No	Yes	No	24	\$55.90	
Timeless Ogee	100% Polyester	122"	5.9"	Yes	No	Yes	24B	\$87.90	
Tinsdale	100% Polyester	54"	0.5"	Yes	No	No	25	\$66.90	
Tivoli Damask	85% Polyester 15% Cotton	56"	12.5"	No	No	No	33	\$105.90	
Tivoli Fresco	85% Polyester 15% Cotton	56"	18"	No	No	No	33	\$105.90	
TOMLIN	100% Linen	54"	15.74"	No	Yes	No	31	\$184.90	
Top Notch 130" FR Sheer	100% Polyester	130"		Yes	No	Yes	18B	\$59.90	
TOPKAPI	58% Polyester 42% Cotton	54"	8.25"	Yes	No	No	24	\$77.90	
TOPKAPI STRIPE	58% Polyester 42% Cotton	54"	13"	Yes	No	No	24	\$77.90	
Tortola	100% Polyester	56"	27"	Yes	No	No	31	\$89.90	
TOSH	54% Linen 46% Cotton Viscose	51"	9"	No	Yes	No	26	\$133.90	
TOWNSHIP	100% Cotton	54"	32"	No	No	No	34	\$97.90	
Track Spotter	100% Polyester	58"	3.63"	Yes	No	No	26	\$66.90	
Tradewinds	40% Polyester 35% Cotton 25% Viscose Embroidery: 100% Cotton	57"	16.25"	No	Yes	No	35	\$119.90	

Prices are effective as of 7/1/2026 and are subject to change without notice.

Pattern Name	Fiber Content	Vertical Fire		Retardant	Exclusive	Railroaded	Workroom	Suggested
		Width	Repeat				Price	
Tree House	70% Polyester 30% Cotton	54"	16"	No	Yes	No	26	\$69.90
Tribal Threads	100% Cotton Embroidery 100% Viscose Base	60"	49.5"	No	Yes	No	51	\$209.90
Trieste	100% Polyester	54"	15.5"	No	Yes	No	25	\$64.50
TRIESTE TWILL	100% Cotton	59"		No	No	No	22	\$54.90
Trifecta - Crypton®	100% Polyester	54"		Yes	No	No	28	\$84.90
Triple Crown - Crypton®	100% Polyester	54"		Yes	No	No	27	\$75.90
Trocadéro Damask	73% Polyester 27% Cotton	54"	18.88"	No	Yes	No	39	\$150.90
Tropic Rainforest	100% Polyester	55"	37.01"	No	No	No	36	\$107.90
Tropic Splendor	100% Polyester	55"	31.25"	Yes	No	No	28	\$69.90
Tropix	55% Linen 45% Viscose	52"	24.5"	No	Yes	No	33	\$99.90
Trovaso Trellis	72% Polyester 21% Cotton 7% Linen	54"	9.33"	No	Yes	No	31	\$94.90
TUCKERTON STRIPE	100% Cotton	54"		Yes	No	No	22	\$73.90
Tucumcari	100% Polyester	57"	5.75"	Yes	Yes	Yes	28	\$75.90
Tudor Lattice	75% Polyester 25% Linen	59"	8.2"	No	No	No	28	\$76.90
Tufts	55% PVC 40% Polyester 5% PU	54"	0.5"	Yes	No	No	25	\$67.90
Tulluride	85% Polyester 15% Rayon	58.27"	16"	No	Yes	No	24	\$59.90
Tumbridge Wells	100% Polyester	55"	17.72"	No	No	No	33	\$107.90
Tupinamba Swirl	100% Cotton Embroidery 100% Polyester Base	55"	15"	No	Yes	No	35	\$119.90
Turkistan	73% Polyester 27% Cotton	54"	6.38"	No	Yes	No	30	\$87.90
Tussah	55% PVC 40% Polyester 5% PU	54"		Yes	No	No	25	\$67.90
Tuxedo Park	100% Polyester Embroidery 100% Polyester Base	54"	18.25"	No	Yes	No	38	\$143.90
Tweet	100% Cotton	54"	9"	No	No	No	22	\$49.90
Twilight	100% Polyester	54"		Yes	No	No	26	\$72.90
Twist Of Fate	43% Polyester 34% Cotton 23% Acrylic	55"	2.76"	Yes	No	No	26	\$70.90
U210	100% Silk	54"		No	No	No	37	\$139.90
U218	100% Silk	40"	0.75"	No	No	No	31	\$199.90
U220	100% Silk	54"	3"	No	No	No	30	\$174.90
U232	100% Silk	54"		No	No	No	37	\$139.90
Ulrich	100% Polyester	110"		Yes	No	Yes	19B	\$66.90
Umbra	100% Polyester	54"		Yes	No	No	30	\$95.90
Underwood	100% Polyester	110"		Yes	No	Yes	21B	\$71.90
Undulate	55% PVC 40% Polyester 5% PU	54"		Yes	No	No	25	\$67.90
Unraveled	70% Polyester 30% Cotton	54"	2.35"	No	No	No	27	\$77.90
Uplike	100% Polyester	110"		Yes	No	Yes	19B	\$66.90
Upland	100% Polyester	110"		Yes	No	Yes	21B	\$71.90
Upswept	100% Polyester	110"		Yes	No	Yes	21B	\$71.90
Upswing	100% Polyester	110"		Yes	No	Yes	21B	\$71.90
Uptempo	100% Polyester	110"		Yes	No	Yes	21B	\$71.90
Upton	100% Polyester	110"		Yes	No	Yes	21B	\$71.90
Upward	100% Polyester	110"		Yes	No	Yes	21B	\$71.90
Upward Trend	100% Polyester	55"	15.1"	Yes	No	No	26	\$67.90
Utley	100% Polyester	110"		Yes	No	Yes	21B	\$71.90
Uvalde	100% Polyester	110"		Yes	No	Yes	21B	\$71.90
Vail Suede	100% Polyester	60"		No	No	No	18	\$41.90
VALENCIA	100% Combed Cotton	54"		No	No	No	12	\$51.90
Valencia	70% Viscose 30% Linen	59"		No	No	No	23	\$59.90
Valenti	100% Polyester	110"		Yes	No	Yes	21B	\$71.90
Valentino Stripe	82.7% Rayon 17.30% Polyester	56"	0.12"	Yes	Yes	Yes	35	\$124.90
Crypton®								
Valjean	100% Polyester	110"		Yes	No	Yes	21B	\$71.90
Valleyview	100% Polyester	110"		Yes	No	Yes	21B	\$71.90
Valmont	100% Polyester	110"		Yes	No	Yes	21B	\$71.90
Van Horn	100% Polyester	110"		Yes	No	Yes	21B	\$71.90
Van Nuys	100% Polyester	110"		Yes	No	Yes	21B	\$71.90
Van Zandt	100% Polyester	110"		Yes	No	Yes	21B	\$71.90

Prices are effective as of 7/1/2026 and are subject to change without notice.

Pattern Name	Fiber Content	Vertical Fire		Retardant	Exclusive	Railroaded	Workroom	Suggested
		Width	Repeat				Price	
Vance	100% Polyester	110"		Yes	No	Yes	19B	\$66.90
Vandemere	100% Polyester	110"		Yes	No	Yes	19B	\$66.90
Vanetta	100% Polyester	110"		Yes	No	Yes	21B	\$71.90
Vanishing Point	100% Cotton	54"	12"	No	No	No	31	\$93.90
Varga	100% Polyester	110"	1"	Yes	No	Yes	21B	\$71.90
Varner	100% Polyester	110"		Yes	No	Yes	21B	\$71.90
Vauxhall Gardens	82.17% Polyester 17.83% Cotton	57.25"	9.72"	Yes	No	Yes	31	\$94.90
Venice	44% Viscose 38% Linen 18% Polyester	116"	15"	No	No	Yes	26B	\$99.90
Ventura	58% Polyester 42% Cotton	54"	11"	Yes	No	No	28	\$78.90
Verge	100% Polyester	110"		Yes	No	Yes	21B	\$71.90
Vesey	100% Polyester	110"		Yes	No	Yes	19B	\$66.90
Vicari	100% Polyester	110"		Yes	No	Yes	21B	\$71.90
Vichey	100% Polyester	58"	16.5"	Yes	No	No	25	\$62.90
Vickers	100% Polyester	110"	1.2"	Yes	No	Yes	19B	\$66.90
Vickory	100% Polyester	110"		Yes	No	Yes	21B	\$71.90
Villa	100% Polyester	57"		Yes	Yes	No	19	\$42.90
Villa Fronds - Tommy Bahama® Sunbrella®	100% Acrylic	54"	27.25"	Yes	Yes	No	46	\$189.90
Villanova	100% Polyester	110"		Yes	No	Yes	21B	\$71.90
VINCE	63% Polyester 35% Viscose 2% Plymde	55"		No	No	No	33	\$111.80
Vincenti	100% Polyester	110"		Yes	No	Yes	21B	\$71.90
VINEYARD	100% Polyester	118"		Yes	No	Yes	3B	\$42.90
Virgo	100% Polyester	110"		Yes	No	Yes	21B	\$71.90
Vistadale	100% Polyester	110"		Yes	No	Yes	21B	\$71.90
Vistancia	100% Polyester	110"		Yes	No	Yes	21B	\$71.90
Voight	100% Polyester	110"		Yes	No	Yes	19B	\$66.90
VOILE 60	100% Polyester	60"		No	No	No	4	\$14.90
W07910	50% Viscose Chenille 23% Polyester	55"	2.33"	No	Yes	No	27	\$79.90
W079100	57% Silk 43% Viscose (Rayon)	53"		No	Yes	No	34	\$231.90
W079103	100% Silk	54"	11.81"	No	No	No	32	\$199.90
W079117	100% Silk	54"	15"	No	Yes	No	45	\$199.90
W079120	100% Silk Embroidery Viscose Base	54"	12.9"	No	Yes	No	66	\$399.90
W079121	100% Silk Embroidery Viscose Base	54"	15.7"	No	Yes	No	66	\$441.90
W079122	100% Silk Embroidery Viscose Base	54"	12.9"	No	Yes	No	66	\$407.90
W079123	100% Silk Embroidery Viscose Base	54"	7.8"	No	Yes	No	60	\$314.90
W079124	55% Silk 45% Cotton	55"	25.2"	No	Yes	No	67	\$399.90
W079125	100% Silk	54"	14.75"	No	Yes	No	43	\$359.90
W079127	100% Silk	54"	11.25"	No	No	No	31	\$188.90
W079130	55% Silk 45% Cotton	55"		No	Yes	No	57	\$599.90
W0792	41% Rayon 34% Polyester 25% Cotton	54"	6.88"	No	Yes	Yes	18	\$76.60
W07938	45% Polyester 28% Cotton 27% Post Industrial Polyester	59.25"	6.63"	No	Yes	No	18	\$75.40
W07956	100% Silk	55"	11.5"	No	Yes	No	36	\$243.90
W07957	57% Polyester 43% Acrylic	54"	0.88"	No	No	No	16	\$67.00
W07958	57% Polyester 43% Acrylic	54"	2.13"	No	Yes	No	16	\$69.40
W07959	74% Acrylic 26% Polyester	54"	19.75"	No	Yes	No	22	\$92.90
W07973	100% Silk	54"		No	Yes	No	46	\$210.90
W07974	92% Polyester 7% Rayon	60"		No	No	No	44	\$199.90
W07975	100% Silk	60"		No	No	No	44	\$199.90
W07976	100% Silk	60"		No	No	No	44	\$199.90
W07977	100% Silk	60"		No	No	No	44	\$199.90
W07978	100% Silk	60"		No	No	No	44	\$199.90
W07979	100% Silk	60"		No	No	No	44	\$199.90
W07980	100% Silk	60"		No	No	No	44	\$199.90
W07981	100% Silk	60"		No	No	No	44	\$199.90
W07984	100% Silk	54"		No	No	No	44	\$199.90

Prices are effective as of 7/1/2026 and are subject to change without notice.

Pattern Name	Fiber Content	Vertical Fire				Exclusive	Railroaded	Workroom	Suggested Retail
		Width	Repeat	Retardant	Price Code				
W07985	100% Silk	54"		No	No	No	44	\$199.90	
W07987	100% Silk	54"		No	No	No	44	\$199.90	
W07988	100% Silk	54"		No	No	No	44	\$199.90	
W07989	100% Silk	54"		No	No	No	26	\$144.90	
W07990	100% Silk	54"		No	No	No	44	\$199.90	
W07999	100% Silk	53"		No	Yes	No	34	\$229.90	
W083122	50% Viscose Chenille 23% Polyester	55"	2.35"	No	Yes	No	18	\$79.90	
W08988	100% Silk	55"	17.44"	No	Yes	No	34	\$222.90	
W141	40% Cotton 40% Polyester 20% Rayon	60"	29"	No	Yes	Yes	19	\$69.70	
W198	58% Acrylic 21% Polypropylene	54"	12.75"	No	Yes	No	22	\$105.90	
Waddell	100% Polyester	110"	1.1"	Yes	No	Yes	21B	\$71.90	
Wagner	100% Polyester	118"		Yes	No	Yes	21B	\$71.90	
Waimea Fret IO	100% Polyester	54"	6.3"	Yes	No	No	24	\$59.90	
Wakefield	100% Polyester	110"		Yes	No	Yes	21B	\$71.90	
Wakeman	100% Polyester	110"		Yes	No	Yes	21B	\$71.90	
Walsh	100% Polyester	110"		Yes	No	Yes	19B	\$66.90	
Waltham	100% Polyester	110"		Yes	No	Yes	21B	\$71.90	
Wandering Vine	100% Polyester	54"	19.13"	No	Yes	No	32	\$94.90	
Waneta	100% Polyester	57"	0.5"	Yes	No	No	23	\$58.90	
Warburton	100% Polyester	110"		Yes	No	Yes	21B	\$71.90	
Wardlow	100% Polyester	110"		Yes	No	Yes	21B	\$71.90	
Waring	100% Polyester	110"	3"	Yes	No	Yes	19B	\$66.90	
Warrington	100% Polyester	110"		Yes	No	Yes	21B	\$71.90	
Washburn	100% Polyester	110"	1.2"	Yes	No	Yes	21B	\$71.90	
Waskom	53% Cotton 47% Polyester	57"	11.8"	Yes	No	No	25	\$64.90	
Watauga	100% Polyester	110"		Yes	No	Yes	21B	\$71.90	
Waterbury	100% Polyester	110"		Yes	No	Yes	21B	\$71.90	
Watercolor Floral	100% Polyester	58.27"	14.5"	No	Yes	No	27	\$71.90	
Watercolor Paisley	100% Polyester	58.27"	19"	No	No	No	28	\$75.90	
Watercolor Trellis	100% Polyester	58.27"	9.75"	No	Yes	No	24	\$59.90	
Waterman	100% Polyester	110"		Yes	No	Yes	21B	\$71.90	
Waterscape Damask	44% Rayon 30% Polyester 16% Nylon 10% Cotton	58"	26"	No	Yes	No	41	\$159.90	
Watkins	100% Polyester	110"		Yes	No	Yes	21B	\$71.90	
WAVELENGTH	100% Polyester	59"		No	No	No	25	\$89.90	
Waverunner Stripe	100% Polyester FR	118"		Yes	No	Yes	37B	\$169.90	
Wavy Stripe	98% Polyester 2% Linen	57"	11"	No	No	No	28	\$78.90	
Waycrest	100% Polyester	110"		Yes	No	Yes	21B	\$71.90	
Wayside	100% Polyester	110"		Yes	No	Yes	21B	\$71.90	
Weir	100% Polyester	110"		Yes	No	Yes	19B	\$66.90	
Well Suited	100% Polyester	58"		No	Yes	No	19	\$43.90	
Wembley	100% Polyester	118"	7.1"	Yes	No	Yes	21B	\$71.90	
Wendover	100% Polyester	110"		Yes	No	Yes	21B	\$71.90	
Wentworth	100% Polyester	110"		Yes	No	Yes	21B	\$71.90	
Wentworth Damask	55% Polyester 45% Viscose	55"	14.75"	Yes	No	No	18	\$38.90	
Westdale	100% Polyester	110"	6.9"	Yes	No	Yes	21B	\$71.90	
Westerly	100% Polyester	110"		Yes	No	Yes	21B	\$71.90	
Westlake	100% Polyester	110"		Yes	No	Yes	21B	\$71.90	
Westmoreland	100% Polyester	110"		Yes	No	Yes	21B	\$71.90	
Westwood	100% Polyester	110"		Yes	No	Yes	21B	\$71.90	
Wexford	100% Polyester	110"	3.7"	Yes	No	Yes	21B	\$71.90	
Wexley	100% Polyester	110"		Yes	No	Yes	21B	\$71.90	
Wharton	100% Polyester	110"		Yes	No	Yes	21B	\$71.90	
Wheeler	100% Polyester	110"		Yes	No	Yes	21B	\$71.90	
Whetherby	100% Polyester	110"	3.5"	Yes	No	Yes	21B	\$71.90	
Whitaker	100% Polyester	110"		Yes	No	Yes	19B	\$66.90	
Whitehall	100% Polyester	110"		Yes	No	Yes	21B	\$71.90	
Whitten	100% Polyester	110"		Yes	No	Yes	21B	\$71.90	
Whittley	100% Polyester	110"		Yes	No	Yes	21B	\$71.90	
WHOOPI	52% Linen 48% Cotton	50"	16"	No	No	No	22	\$105.90	
Wickes	100% Polyester	110"		Yes	No	Yes	19B	\$66.90	
Wiggins	100% Polyester	110"		Yes	No	Yes	21B	\$71.90	
Wightwick Manor	100% Cotton	54"	17"	Yes	No	No	25	\$61.90	

Prices are effective as of 7/1/2026 and are subject to change without notice.

Pattern Name	Fiber Content	Width	Vertical Fire		Exclusive	Railroaded	Workroom	Suggested
			Repeat	Retardant			Price	
Wilcox	100% Polyester	110"		Yes	No	Yes	19B	\$66.90
Wild Thing	63% Rayon 37% Polyester	55"	14.17"	No	No	No	35	\$118.90
WILDCAT	100% Polyester	55"	3.5"	Yes	No	No	30	\$89.90
Wildflower Fields	52% Cotton 48% Polyester	55"	4.75"	No	Yes	No	32	\$96.90
Wildflower Garden	100% Polyester	56"	6.89"	No	No	No	31	\$95.90
Wildwood	100% Polyester	110"		Yes	No	Yes	21B	\$71.90
Wilfrid	100% Polyester	110"		Yes	No	Yes	21B	\$71.90
Wilhelmina	100% Polyester	110"	6.7"	Yes	No	Yes	21B	\$71.90
Wilkinson	100% Polyester	110"		Yes	No	Yes	21B	\$71.90
Willerby	100% Polyester	110"	4.8"	Yes	No	Yes	21B	\$71.90
WILLIAMSTOWN	65% Linen 35% Viscose Rayon	54"	15.25"	No	No	No	45	\$199.90
Willmington	100% Polyester	110"		Yes	No	Yes	21B	\$71.90
Willowbrooke	100% Polyester	110"		Yes	No	Yes	21B	\$71.90
Wilshire	100% Polyester	110"		Yes	No	Yes	21B	\$71.90
Windermere	100% Cotton	54"	27"	No	No	No	30	\$81.90
Windfield	100% Polyester	110"		Yes	No	Yes	21B	\$71.90
Windsong	100% Polyester	110"		Yes	No	Yes	21B	\$71.90
Winsome	100% Polyester	110"		Yes	No	Yes	21B	\$71.90
Wolcott	100% Polyester	110"		Yes	No	Yes	21B	\$71.90
Woodburn	100% Polyester	110"		Yes	No	Yes	21B	\$71.90
Woodhouse	100% Polyester	110"		Yes	No	Yes	21B	\$71.90
Woodlawn	100% Polyester	110"		Yes	No	Yes	21B	\$71.90
Woodruff	100% Polyester	110"	10.5"	Yes	No	Yes	19B	\$66.90
Woodson	55% PVC 40% Polyester 5% PU	54"		Yes	No	No	25	\$67.90
Woodward	100% Polyester	110"		Yes	No	Yes	21B	\$71.90
WOODY	80.6% Linen 19.4% Viscose	51"	12"	No	Yes	No	26	\$133.90
Wooster	100% Polyester	110"		Yes	No	Yes	21B	\$71.90
Wooten	100% Polyester	110"		Yes	No	Yes	21B	\$71.90
Wyatt	100% Polyester	110"		Yes	No	Yes	21B	\$71.90
Wynnewood	100% Polyester	110"		Yes	No	Yes	21B	\$71.90
Xavier	100% Polyester	110"	1"	Yes	No	Yes	21B	\$71.90
Yacht Club	100% Cotton	60"		No	No	No	23	\$57.90
Yaeger	100% Polyester	110"		Yes	No	Yes	21B	\$71.90
Yakimo	100% Polyester	110"		Yes	No	Yes	21B	\$71.90
Yale	100% Polyester	110"		Yes	No	Yes	19B	\$66.90
Yancy	100% Polyester	110"		Yes	No	Yes	21B	\$71.90
Yardena	100% Polyester	110"		Yes	No	Yes	21B	\$71.90
Yardley	100% Polyester	110"		Yes	No	Yes	21B	\$71.90
Yasmine	100% Polyester	110"		Yes	No	Yes	21B	\$71.90
Yazoo	100% Polyester	110"		Yes	No	Yes	21B	\$71.90
Yolanda	100% Polyester	110"		Yes	No	Yes	21B	\$71.90
Yorkmont	100% Polyester	110"		Yes	No	Yes	21B	\$71.90
Yvette	100% Polyester	110"		Yes	No	Yes	21B	\$71.90
Yvonne	100% Polyester	110"		Yes	No	Yes	21B	\$71.90
Zachary	100% Polyester	118"		Yes	No	Yes	19B	\$66.90
Zamora	100% Polyester	118"		Yes	No	Yes	21B	\$71.90
ZANZIBAR	100% Cotton	54"	4.5"	Yes	No	No	25	\$83.90
Zapata	100% Polyester	110"		Yes	No	Yes	21B	\$71.90
Zaring	100% Polyester	110"		Yes	No	Yes	21B	\$71.90
Zavala	100% Polyester	110"		Yes	No	Yes	21B	\$71.90
Zebly	100% Polyester	110"		Yes	No	Yes	21B	\$71.90
Zeda	100% Polyester	110"		Yes	No	Yes	21B	\$71.90
Zee	100% Polyester	110"		Yes	No	Yes	21B	\$71.90
Zeigler	100% Polyester	110"		Yes	No	Yes	21B	\$71.90
Zemeny	100% Polyester	110"		Yes	No	Yes	21B	\$71.90
Zenith	44% Viscose 33% Cotton 23% Linen	55"	4.5"	No	Yes	No	52	\$248.90
Zeno	100% Polyester	110"		Yes	No	Yes	21B	\$71.90
Ziggy	100% Polyester	55"	0.63"	Yes	No	No	28	\$81.90
Ziggy Diamond	38% Viscose 33% Spun Viscose 29% Polyester	52"	11.02"	No	Yes	No	36	\$124.90
Zinnia	52% Cotton 34% Polyester 14% Spun Viscose	54"	7.68"	No	Yes	No	37	\$134.90

Prices are effective as of 7/1/2026 and are subject to change without notice.

Pattern Name	Fiber Content	Vertical Width	Fire Repeat	Retardant	Exclusive	Railroaded	Workroom Price Code	Suggested Retail
Zip Line	55% PVC 40% Polyester 5% PU	54"		Yes	No	No	25	\$67.90
Ziv	100% Polyester	110"		Yes	No	Yes	21B	\$71.90
Zola	100% Polyester	110"		Yes	No	Yes	21B	\$71.90
ZOOEY	100% Linen	50"	15.75"	No	Yes	No	30	\$177.90
Zora	100% Polyester	110"		Yes	No	Yes	21B	\$71.90
Zuber	100% Polyester	110"		Yes	No	Yes	21B	\$71.90
Zuider	100% Polyester	110"	7.1"	Yes	No	Yes	21B	\$71.90

Prices are effective as of 7/1/2026 and are subject to change without notice.

Wesco Fabric

Pattern Name	Fiber Content	Width	Vertical Repeat	Fire Retardant	Exclusive	Railroaded	Workroom Price Code	Suggested Retail
A NOTCH ABOVE	58% Viscose 31% Cotton 11% Polyester	54"	13.25"	No	Yes	No	19	\$79.90
A1	100% Polyester	54"	4.5"	No	Yes	No	15	\$56.98
ABOVE AVERAGE	100% Silk	56"		No	Yes	No	26	\$145.90
ACHIEVEMENT	66% Polyester 34% Cotton	54"	13.5"	No	Yes	No	12	\$44.98
ADVOCATE	55% Cotton 45% Polyester	54"		No	No	No	12	\$50.90
AGAINST THE WIND	100% Polyester	51.5"	11.75"	No	Yes	No	14	\$53.90
ALADDIN	100% Polyester Embroidery 100% Cotton Base	52"	11.63"	No	No	No	7	\$26.90
ALICANTE	68% Polyester 32% Rayon	57"	9.75"	No	No	No	19	\$78.90
ALL ANGLES	66% Polyester 34% Cotton	56"	3.25"	No	No	No	13	\$50.90
AMAZEMENT	100% Polyester	54"	12"	No	No	No	15	\$59.30
AMERISTAR	100% Polyester	54"		No	No	No	11	\$53.90
ANGELINA	100% Polyester	118"	1"	Yes	No	Yes	4B	\$45.90
ANTIBES	100% Cotton	55"	8.75"	No	No	No	19	\$78.90
APPALOOSA STRIPE	60% Polyester 40% Linen	116"		No	No	Yes	5B	\$48.90
ARDEN HOUSE	86% Polyester 14% Cotton	49"	12.5"	No	No	No	21	\$96.90
ART WALK	90% Polyester 10% Cotton	54"	6.5"	No	No	No	15	\$57.90
BANGLES AND RINGS	39% Cotton 33% Polyester 28% Rayon	57"	12.5"	No	No	No	19	\$78.90
BARETTA	57% Polyester 43% Cotton	54.25"	7"	No	Yes	No	13	\$50.90
BAROMETER	54% Linen 32% Cotton 14% Polyester	50"	6.25"	No	No	No	22	\$103.90
BASE HIT	80% Polyester 20% Cotton	57"	1.75"	No	No	No	8	\$33.90
BASKET WEAVE	100% Polyester	56.75"	2.25"	No	No	No	18	\$79.90
BE MY GUEST	100% Cotton	55"	26.25"	No	No	No	16	\$59.90
BEYOND THE PINES	100% Cotton	50"	15"	No	Yes	No	21	\$96.90
BIG BANG	100% Polyester	54"		No	No	No	19	\$87.90
BILLIONAIRE	69% Cotton 31% Polyester	54"	1"	No	No	No	18	\$82.90
BITS AND PIECES	58% Polyester 42% Cotton	54"	2"	No	No	No	12	\$50.90
BONA FIDE	100% Cotton	54"		No	No	No	16	\$69.90
BOURBON STRIPE	100% Linen	55"		No	Yes	No	14	\$59.90
BREAK A LEG	63% Acetate 37% Rayon	59.25"		No	No	No	16	\$66.98
BREAK THE ICE	45% Viscose 40% Cotton 15% Silk	51"		No	Yes	No	16	\$66.90
BREAKDANCE	55% Cotton 45% Polyester	54"	10.75"	No	Yes	No	14	\$54.90
BREATHLESS	100% Silk	52"	31"	No	Yes	No	32	\$176.90
BRING ABOUT	52% Cotton 48% Polyester	54"	14.5"	No	No	No	11	\$40.90
BRIXTON	88% Polyester 12% Viscose	54.5"		No	No	No	11	\$47.90
BUDAPEST	100% Cotton	55"	27"	No	No	No	18	\$63.90
BUGATTI	90% Linen 10% Lurex	51"	12.5"	No	Yes	No	31	\$180.90

Prices are effective as of 7/1/2026 and are subject to change without notice.

Pattern Name	Fiber Content	Width	Vertical Repeat	Fire Retardant	Exclusive	Railroaded	Workroom Price Code	Suggested Retail
CALLAHAN	100% Polyester	55"		Yes	No	No	12	\$49.90
CAMELIA	100% Polyester	54"	14.75"	No	No	No	20	\$87.90
CAPILANO	56% Rayon 44% Polyester	55"		No	No	No	18	\$81.90
CAPILANO	56% Rayon 44% Polyester	55"		No	No	No	19	\$86.90
CASA MILA	55% Linen 45% Viscose	54"	24.25"	No	No	No	18	\$70.90
CHANGE THE WORLD	70% Silk 30% Viscose	54"	2.5"	No	Yes	No	18	\$79.98
CHORUS	100% Polyester	53"		No	No	No	25	\$65.90
COASTLINE	100% Cotton	58"		No	No	No	15	\$63.90
COME RAIN OR SHINE	55% Linen 45% Viscose	55.25"	25.25"	No	No	No	19	\$76.90
COMFORTABLE	100% Combed Cotton	58.5"		No	No	No	12	\$51.90
COMMON GROUND	70% Viscose 30% Cotton	54.5"		No	Yes	No	17	\$77.90
COOL RIVER	100% Polyester	54"	18"	No	Yes	No	19	\$83.90
CORVALLIS	100% Polyester	54"		No	No	No	18	\$80.90
COUSTEAU	56% Polyester 32% Cotton 12% Rayon	56"	24.5"	No	No	No	17	\$62.90
COVENT GARDEN	77% Polyester 23% Viscose	55"		No	No	No	21	\$103.90
CRAFTWORKS	100% Polyester	55"	0.5"	No	No	No	18	\$91.60
CRAVEN HEIGHTS	55% Rayon 45% Polyester	57"	14.25"	No	No	No	21	\$91.90
CROSS THE LINE	57% Polyester 43% Cotton	54.25"	4.5"	No	Yes	No	13	\$50.90
CULTURE	100% Silk	52"	10"	No	Yes	No	25	\$127.90
CUMBERLAND	100% Polyester	59"	22.25"	No	No	No	8	\$24.90
CURACAO	100% Cotton	49.5"	15.25"	No	Yes	No	25	\$123.90
CYBERSPACE	100% Polyester	51.25"	6.25"	No	No	No	22	\$103.90
DEPEND ON ME	100% Silk	51"	15.25"	No	Yes	No	26	\$139.98
DIAMOND ANNIVERSARY	100% Silk	52.5"	7"	No	Yes	No	32	\$199.90
DIAMOND HEAD	90% Viscose 10% Silk	52"	10.25"	No	Yes	No	22	\$99.90
DIAMONDS ARE FOREVER	100% Silk	54"	9"	No	Yes	No	32	\$199.90
DIEGO	100% Polyester	116"		Yes	No	Yes	5B	\$48.90
DIFFERENT STROKES	100% Cotton	54"		No	No	No	9	\$39.90
DREAM HOUSE	100% Viscose Applique 100% Viscose Base	49.5"	7.75"	No	Yes	No	30	\$176.90
DREAM TICKET	70% Silk 30% Polyester	54"	17.75"	No	Yes	No	24	\$117.90
EIGHTH WONDER	60% Cotton 40% Polyester	54.5"	15.25"	No	Yes	No	23	\$107.90
ENTWINE	100% Polyester	60"		Yes	No	No	12	\$48.90
EVERY BREATH YOU TAKE	80% Viscose 20% Linen	52"	9.5"	No	Yes	No	22	\$98.90
EXCEPTIONAL	61% Polyester 39% Cotton Linen	54"	17.75"	No	Yes	No	17	\$68.90
EXPRESSWAY	34% Rayon 34% Cotton 32% Polyester	55.75"	3.75"	No	No	No	20	\$84.90
EXTINCT	100% Polyester	58"	9.25"	No	No	No	18	\$73.40
EXTRA CREDIT	100% Polyester	54"		Yes	No	No	10	\$41.90
FAVORITE TRINKET	100% Polyester	52.5"	11.5"	No	Yes	No	13	\$48.98
FELLOWSHIP	50% Viscose 27% Polyester 23% Cotton	57.75"		No	No	No	15	\$60.90
FIELD DAY	60% Polyester 30% Cotton 10% Linen	54.25"	17.5"	No	Yes	No	19	\$79.90

Prices are effective as of 7/1/2026 and are subject to change without notice.

Pattern Name	Fiber Content	Width	Vertical Repeat	Fire Retardant	Exclusive	Railroaded	Workroom Price Code	Suggested Retail
FINE ART	53% Viscose 30% Polyester 17% Spun Viscose	55.25"	30.75"	No	Yes	No	24	\$99.98
FINER THINGS	59% Polyester 29% Viscose 12% Silk	52"	17"	No	Yes	No	21	\$92.90
FIRST AND FOREMOST	70% Silk 30% Polyester	55.5"	5.25"	No	Yes	No	24	\$117.90
FLOWER OF THE SEA	59% Cotton 41% Linen	49.25"	7.25"	No	Yes	No	22	\$99.90
FOCUS	100% Polyester	58"	15"	No	Yes	No	10	\$39.90
FONTHILL	75% Cotton 25% Linen	55"	24.7"	No	No	No	16	\$59.90
FOOTLIGHTS	100% Cotton	54"		No	No	No	16	\$69.98
FOOTLOOSE	100% Polyester	54"	11.5"	No	Yes	No	14	\$53.90
FREESTYLE	100% Polyester	60"	16.75"	No	Yes	No	10	\$36.90
FRIENDSHIP	100% Polyester	54.25"	11.5"	No	Yes	No	13	\$51.90
GARDEN FLAGSTONE	57% Polyester 43% Cotton	54"	8"	No	Yes	No	13	\$50.90
GARDENIA	61% Cotton 27% Viscose 12% Polyester	54"	18.5"	No	Yes	No	18	\$75.90
GLACIAL LAKE	100% Polyester	53.25"	7.5"	No	Yes	No	17	\$70.90
GLAMOROUS	92% Polyester 8% Cotton	55"		No	No	No	11	\$45.90
GLEE	100% Polyester	56"	24"	No	Yes	No	19	\$74.90
GLOCESTER	100% Polyester	59"	4"	No	No	No	7	\$26.90
GO WITH THE FLOW	85% Cotton 12% Polyester 3% Zari	53"	3.75"	No	No	No	22	\$99.90
GOAL ORIENTED	88% Polyester 12% Polyamide	58"	17"	No	Yes	No	11	\$43.90
GOOD DEED	100% Polyester	53"	11.75"	No	Yes	No	15	\$59.90
GUADALAJARA	100% Linen	55"		No	Yes	No	13	\$53.90
GUILTY PLEASURE	56% Polyester 44% Cotton	51.75"	6.25"	No	No	No	19	\$79.90
HALF MOON BAY	87% Cotton 13% Rayon	58"		No	No	No	10	\$41.90
HAVANA STRIPE	100% Linen	47"		No	Yes	No	13	\$55.90
HAZELWOOD	100% Cotton	54.5"	0.5"	No	No	No	18	\$79.90
HEAD OVER HEELS	100% Polyester	52.5"	16"	No	Yes	No	13	\$49.90
HENNA PLAID	100% Silk	52.5"	3.5"	No	Yes	No	20	\$85.90
HENNA STRIPE	100% Silk	55"		No	Yes	No	19	\$85.90
HEXAGON	60% Polyester 27% Viscose 13% Cotton	54.25"	8.25"	No	Yes	No	14	\$53.90
HIDALGO	90% Linen 10% Lurex	55"		No	Yes	No	14	\$58.90
HIDDEN VALLEY	25% Polyester 25% Cotton 25% Viscose	54.5"		No	Yes	No	15	\$65.98
HOHOKAM	100% Cotton	54.25"	7.25"	No	Yes	No	15	\$59.90
HOMESPUN	100% Polyester	54"		No	No	No	18	\$91.60
HOMESPUN	100% Polyester	54"		Yes	No	No	18	\$91.60
HONESTY	100% Polyester	53"	12.25"	No	Yes	No	14	\$52.90
ILLUSTROUS	85% Viscose 15% Silk	53"		No	Yes	No	16	\$66.90
IN STITCHES	100% Cotton	50"	15.25"	No	No	No	22	\$103.90
IN THE AIR	100% Polyester	118"		No	No	Yes	20B	\$90.90
INTO THE GROOVE	75% Viscose 25% Linen	51"	9"	No	Yes	No	22	\$99.90
INTOXICATING	100% Silk	53"	31"	No	Yes	No	34	\$199.90
IROQUOIS	100% Cotton	54"	9.25"	No	Yes	No	15	\$59.90
IT MATTERS	100% Polyester	56"		No	No	No	15	\$60.90
IVORY COAST	100% Linen	54.5"	15.25"	No	Yes	No	28	\$153.90
JAM SESSION	56% Cotton 44% Polyester	54"		No	No	No	11	\$45.90
JAVELIN	90% Polyester 10% Cotton	54"	6.25"	No	No	No	15	\$57.90
JOAN OF ARC	100% Silk	52.5"	16.5"	No	Yes	No	29	\$167.90
JOSEPHINA	100% Polyester	118"	0.5"	Yes	No	Yes	5B	\$49.90

Prices are effective as of 7/1/2026 and are subject to change without notice.

Pattern Name	Fiber Content	Width	Vertical Repeat	Fire Retardant	Exclusive	Railroaded	Workroom Price Code	Suggested Retail
KERALA	73% Viscose 20% Cotton 7% Silk	52"	17.5"	No	Yes	No	25	\$124.90
KINGSLEY	80% Polyester 20% Cotton	56"		No	No	No	9	\$39.90
LAKEPORT PLANTATION	75% Cotton 25% Linen	54"	17.5"	No	No	No	17	\$69.90
LIFE COACH	60% Rayon 40% Linen	54"	11.5"	No	No	No	21	\$93.50
LIFE EXPERIENCE	81% Silk 19% Wool PBT	52"	10"	No	Yes	No	30	\$176.90
LIFE'S TOO SHORT	34% Polyester 34% Cotton 32% Rayon	56.5"	21.75"	No	No	No	21	\$84.90
LIGHT AND EASY	100% Polyester	56"		No	Yes	No	10	\$40.90
LOST MEDALLION	60% Polyester 30% Cotton 10% Linen	52.75"	12.5"	No	Yes	No	18	\$77.90
LUCERNE	66% Viscose 34% Polyester	58"	19.25"	No	No	No	20	\$79.90
MAGELLEN	100% Cotton	51"	11"	No	No	No	20	\$87.90
MAGNA	100% Polyester	48.75"	8.5"	No	No	No	14	\$54.10
MAIN PURPOSE	50% Silk 50% Viscose	54"	4.25"	No	Yes	No	20	\$84.90
MAINLAND	95% Polyester 5% Linen	58"		No	No	No	8	\$33.90
MAKE A DISCOVERY	62% Viscose 38% Polyester	50"	16.75"	No	Yes	No	17	\$66.90
MALDIVES	100% Cotton	49.5"	15"	No	Yes	No	24	\$116.90
MANDELA	100% Silk	53.75"	12.25"	No	Yes	No	31	\$189.90
MANNER OF SPEAKING	52% Cotton 48% Polyester	56"	4.5"	No	No	No	11	\$40.90
MARK MY WORDS	52% Polyester 48% Cotton	54.5"		No	No	No	16	\$67.90
MARK MY WORDS	52% Polyester 48% Cotton	54.5"		No	No	No	21	\$67.90
MEDAL OF HONOR	64% Polyester 36% Linen	54"	14.5"	No	Yes	No	16	\$63.90
MEET YOUR IDOL	52% Viscose 39% Cotton 9% Silk	52"	21.5"	No	Yes	No	23	\$99.90
MENDOZA	100% Polyester	116"		Yes	No	Yes	2B	\$45.90
MESA GRANDE	90% Polyester 10% Linen	114"		No	No	Yes	5B	\$48.90
MESSAGE IN A BOTTLE	78% Viscose 22% Linen	50"	9.25"	No	Yes	No	22	\$98.90
MODERN AGE	100% Polyester	52"	13.25"	No	Yes	No	13	\$51.98
MONFORT	60% Viscose 40% Silk	55"		Yes	Yes	No	18	\$79.90
MONTEZUMA	64% Cotton 27% Viscose 9% Polyester	50.75"	12.5"	No	Yes	No	21	\$93.90
MORENO STRIPE	60% Polyester 40% Linen	114"		No	No	Yes	5B	\$48.90
MOROCCO	55% Linen 45% Rayon	55"	26"	No	No	No	21	\$108.90
MOTHER EARTH	75% SILK 25% Cotton	51"	7"	No	Yes	No	22	\$99.90
MY EUPHORIA	100% Polyester	54"	19.25"	No	Yes	No	19	\$74.90
MYRIAD	53% Cotton 47% Polyester	56"	7.25"	No	No	No	10	\$36.90
MYSTICAL ORCHARD	56% Cotton 54% Polyester	51.25"	6.25"	No	No	No	24	\$119.90
NATURAL STREAK	90% Linen 10% Viscose	54"	3"	No	Yes	No	15	\$56.90
NEWER HEIGHTS	80% Viscose 20% Silk	54"	2"	No	Yes	No	15	\$61.90
OUT OF SIGHT	100% Polyester	55"	11"	No	Yes	No	14	\$55.98
PAINT THE TOWN	100% Cotton	55.25"	15.5"	No	Yes	No	15	\$59.90
PAINTER'S WALL	57% Polyester 43% Cotton	54.5"		No	Yes	No	12	\$50.90
PAISLEY PARADE	100% Polyester Embroidery 100% Rayon Base	52.5"	24.5"	No	No	No	19	\$72.90

Prices are effective as of 7/1/2026 and are subject to change without notice.

Pattern Name	Fiber Content	Width	Vertical Repeat	Fire Retardant	Exclusive	Railroaded	Workroom Price Code	Suggested Retail
PAISLEY UNIQUE	61% Cotton 27% Viscose 12% Polyester	52.5"	14.75"	No	Yes	No	18	\$75.90
PALACE OF VERSAILLES	93% Polyester 7% Linen	54"	23.75"	No	No	No	20	\$79.90
PALOMAS SHEER	100% Polyester	117"		No	No	Yes	8B	\$60.90
PECOS	100% Cotton	54.25"	13.5"	No	Yes	No	15	\$59.90
PERPENDICULAR	100% Polyester	52"	15.75"	No	Yes	No	14	\$54.98
PERSONAL GROWTH	100% Cotton	55"	15.25"	No	No	No	23	\$111.90
PERU STRIPE	100% Linen	54"		No	Yes	No	14	\$58.90
PILLAR POINT	100% Cotton	57.75"		No	No	No	12	\$51.90
PIPER	100% Cotton	54"		No	No	No	22	\$58.90
PLAY THE GAME	100% Polyester	59.5"	6"	No	Yes	No	13	\$49.98
POLLY	70% Cotton 30% Polyester	55"		No	No	No	16	\$67.90
POLYGON	100% Polyester	56"	7.75"	No	Yes	No	14	\$54.90
POMPANO	100% Cotton	54"	26.5"	No	No	No	28	\$140.90
POSITANO	40% Linen 40% Silk 20% Viscose	52"	15.75"	No	Yes	No	26	\$137.90
POSSIBILITIES	100% Polyester	54.5"	11.25"	No	No	No	24	\$115.98
POTOMAC		56.25"	8"	No	No	No	13	\$49.98
PRECIOUS MEMORIES	100% Polyester	53"	11.75"	No	Yes	No	10	\$39.90
PRECIOUS STONES	100% Polyester	53.5"	5.75"	No	Yes	No	20	\$89.90
PREMIUM STRIPE	61% Polyester 39% Cotton Linen	52"		No	Yes	No	16	\$68.90
PRIMARY	100% Polyester	58"		No	Yes	No	10	\$41.98
PRIMO	100% Polyester	55"	25.5"	No	Yes	No	15	\$55.98
PROGRESS	100% Polyester	52"	3"	No	Yes	No	12	\$46.98
PROVIDENCE	100% Polyester	58"	30.25"	No	No	No	10	\$31.90
PROVO	64% Polyester 36% Viscose	55.75"	1.5"	No	No	No	22	\$109.90
PUERTO RICO	100% Linen	55"		No	Yes	No	13	\$55.90
PULSAR	100% Polyester	59"	0.5"	No	No	No	17	\$77.90
PUTTIN' ON THE RITZ	59% Viscose 31% Cotton 10% Silk	52"	16"	No	Yes	No	22	\$99.90
QUEEN ELIZABETH	100% Silk	54"	6.25"	No	Yes	No	31	\$189.90
QUIET SPACE	63% Polyester 20% Cotton 17% Viscose	54.25"		No	No	No	12	\$48.90
QUINTESSENCE	70% Cotton 30% Polyester	54"	14"	No	Yes	No	21	\$92.90
RANDOM ACT	88% Viscose 12% Silk	55"		No	Yes	No	20	\$97.90
REAL MCCOY	100% Cotton	54.5"	8.25"	No	Yes	No	15	\$59.90
RECOGNIZE	58% Cotton 42% Polyester	54"		No	No	No	28	\$80.90
RELIABLE	100% Cotton	53"		No	No	No	18	\$79.90
RESOURCES	100% Polyester	53"	12"	No	Yes	No	13	\$48.90
RIO LINDA	58% Cotton 42% Polyester	54"		No	No	No	28	\$80.90
RIVERFRONT	100% Cotton	57.5"		No	No	No	13	\$54.90
RODERO	59% Polyester 41% Viscose	56"	10.5"	No	No	No	14	\$53.90
ROUND TABLE	100% Polyester	52"	3.75"	No	Yes	No	12	\$45.98
RUSTIC STRIPE	60% Polyester 40% Linen	115"		No	No	Yes	5B	\$48.90
SALVATORE	100% Polyester	54"		No	No	No	15	\$65.90
SAN GABRIEL	60% Polyester 40% Linen	115"		No	Yes	Yes	5B	\$48.90
SAN MARCOS	60% Polyester 40% Linen	115"		No	No	Yes	5B	\$48.90

Prices are effective as of 7/1/2026 and are subject to change without notice.

Pattern Name	Fiber Content	Width	Vertical Repeat	Fire Retardant	Exclusive	Railroaded	Workroom Price Code	Suggested Retail
SAN MIGUEL	100% Linen	54.5"	8.75"	No	No	No	22	\$98.98
SAVE THE DAY	60% Polyester 30% Cotton 10% Linen	55"	5.75"	No	Yes	No	19	\$79.90
SAVE THE PLANET	85% Viscose 15% Silk	49.5"	3"	No	Yes	No	26	\$131.90
SAVITAR	70% Cotton 30% Polyester	54.5"		No	No	No	12	\$49.90
SCROLL WORKS	70% Polyester 30% Cotton	52.75"	9.5"	No	No	No	19	\$79.90
SEAGRASS	100% Polyester	49"	4.25"	No	Yes	No	19	\$79.90
SEAMLESS	100% Polyester	118"		Yes	No	Yes	1B	\$22.90
BATISTE								
SELF INDULGENCE	100% Silk	52"	26"	No	Yes	No	28	\$146.90
SHASTA	100% Polyester	56"		Yes	No	No	11	\$45.90
SHEENA	100% Polyester	115"	5"	Yes	No	Yes	12B	\$78.90
SHORT TRACK	88% Polyester 12% Viscose	59"	18"	No	Yes	No	9	\$35.90
SKYFALL	100% Polyester	55"	6.5"	Yes	No	No	7	\$26.90
SMART MOVE	100% Polyester	54.5"		Yes	No	No	23	\$59.90
SOCIAL STATUS	90% Polyester 10% Cotton	56"	25.25"	No	Yes	No	20	\$79.90
SOFTEN UP	100% Polyester	56"		Yes	No	No	11	\$47.90
SOLID GROUND	100% Polyester	54"		No	No	No	11	\$51.90
SONIC	100% Combed Cotton	54"		No	No	No	25	\$67.90
SOOTHE ME	100% Polyester Embroidery 100% Cotton Base	52"	12"	No	No	No	7	\$26.90
SPIN A YARN	90% Viscose 10% Silk	52.5"	1.5"	No	Yes	No	20	\$94.90
SPOTTED LYNX	100% Cotton	54.5"	9"	No	No	No	9	\$32.90
STARBURST	100% Polyester	58"		No	No	No	17	\$74.90
STAY CONNECTED	100% Polyester	57.75"	5.25"	No	Yes	No	11	\$43.98
STEP BY STEP	66% Polyester 34% Cotton	52"	6.75"	No	Yes	No	12	\$45.98
STONE'S THROW	100% Cotton	55.25"	26.5"	No	No	No	16	\$59.90
STRAIGHT FORWARD	100% Polyester	53"	15.25"	No	Yes	No	14	\$54.98
STRIKE GOLD	100% Polyester	54"	5.5"	No	Yes	No	18	\$73.90
SUPERIOR CHOICE	57% Polyester 15% Linen 28% Cotton	52.5"	12.75"	No	No	No	18	\$74.90
SUPREME	61% Polyester 39% Cotton Linen	54"	13.5"	No	Yes	No	17	\$68.90
SWAN LAKE	100% Silk	54"		No	No	No	38	\$150.22
SWEET AMBROSIA	100% Polyester	55"	14"	No	Yes	No	18	\$74.90
SYMBOLIZE	100% Polyester	52"	7.25"	No	No	No	11	\$41.80
TABLE MESA	70% Viscose 30% Silk	54"	1.5"	No	Yes	No	20	\$93.90
TAIL WIND	59% Cotton 41% Polyester	54.5"		No	No	No	24	\$64.90
TAJ MAHAL	50% Cotton 31% Viscose 19% Silk	53"	74"	No	Yes	No	29	\$135.90
TAKE ACTION	100% Linen Embroidery; 85% Viscose 15% Silk Base	48"		No	Yes	No	25	\$139.90
TAKE SHAPE	67% Polyester 33% Cotton	56"	7"	No	No	No	13	\$50.90
TEAM PURSUIT	100% Polyester	59"	16.75"	No	Yes	No	9	\$35.90
TEARDROPS	57% Cotton 43% Polyester	54"	5.25"	No	No	No	13	\$50.90
THE HAMPTONS	100% Cotton	54"	9"	No	No	No	15	\$59.90
THUMBELINA	79% Cotton 21% Polyester	55.25"		No	No	No	12	\$51.90
TOTAL ECLIPSE	45% Viscose 32% Silk 23% Cotton	50"	11.5"	No	Yes	No	22	\$99.90

Prices are effective as of 7/1/2026 and are subject to change without notice.

Pattern Name	Fiber Content	Width	Vertical Repeat	Fire Retardant	Exclusive	Railroaded	Workroom Price Code	Suggested Retail
TRAIL BLAZER	88% Viscose 12% Silk	55"		No	Yes	No	20	\$97.90
TRAMWAY	100% Polyester	55.75"	16.75"	No	No	No	15	\$57.90
TRANSLATIONS	80% Cotton 20% Linen	55"	4.5"	No	No	No	10	\$37.90
TWEED	87% Polyester 13% Viscose	54.5"		No	No	No	15	\$60.90
TWIRL ME AROUND	100% Polyester	52.5"	3"	No	Yes	No	14	\$54.98
TWIST AND SHOUT	100% Polyester	51.75"	8.75"	No	No	No	12	\$45.90
VALDEZ	100% Polyester	122"		Yes	No	Yes	3B	\$43.90
VELVET ROMANCE	50% Cotton 50% Viscose	54.5"	12.75"	No	Yes	No	28	\$152.90
VENEZUELA	100% Linen	54"		No	Yes	No	14	\$58.90
VERA CRUZE	100% Polyester	117"		Yes	No	Yes	11B	\$74.90
VESTIBULE	55% Polyester 45% Cotton	54.5"	5.25"	No	Yes	No	13	\$49.98
VINLAND ESTATE	55% Linen 45% Rayon	54"	25.75"	No	No	No	20	\$79.90
VIP	100% Polyester	54"	17.25"	No	Yes	No	17	\$71.90
WAIKIKI	69% Cotton 31% Polyester	56"	14"	No	No	No	22	\$99.90
WATER WORLD	100% Cotton	53"	8.25"	No	Yes	No	15	\$59.90
WHAT I LIKE ABOUT YOU	50% Polyester 50% Viscose	49.5"		No	No	No	17	\$74.80
WINTER WONDERLAND	54% Linen 32% Cotton 14% Polyester	51"	12.75"	No	No	No	22	\$103.90
WORLD PEACE	64% Silk 28% Viscose 8% Wool	53"	39"	No	Yes	No	30	\$146.90
ZUNI	100% Polyester	56"	9.25"	No	Yes	No	13	\$51.98

Prices are effective as of 7/1/2026 and are subject to change without notice.

RM COCO Decor Ltd Trim

Pattern Name	Fiber Content	Width	Vertical Repeat	Fire Retardant	Exclusive	Suggested Retail
24283 KEY TASSEL				No	No	\$57.90
25378-090 TIEBACK				No	No	\$135.90
25379-088 CHAIR TIE				No	No	\$81.20
4 BULLION				No	Yes	\$52.00
80525-060 LIPCORDER				No	No	\$14.00
80559-045 BRUSH FRINGE				No	Yes	\$33.90
81830-100 4 BULLION				No	Yes	\$52.00
81830-150 6 BULLION				No	No	\$79.90
92049-045 BORDER				No	Yes	\$20.00
92072 BEADED TASSEL FRINGE				No	Yes	\$95.00
99750 TASSEL FRINGE				No	No	\$49.00
BD100 BORDER 2 3/8"	100% Acrylic	2.38"		No	Yes	\$58.90
BD101 BORDER 2 3/8"	91% Acrylic 9% Polyester	2.38"		No	Yes	\$50.90
BD102 BORDER 2"	100% Acrylic	2"		No	Yes	\$48.90
BD103 BORDER 1 7/8"	100% Acrylic	1.88"		No	Yes	\$28.90
BD104 BORDER 1 7/8"	100% Acrylic	1.88"		No	Yes	\$53.90
BD105 BORDER 1"	100% Acrylic	1"		No	Yes	\$72.90
BD106 BORDER .75"	89% Acrylic 11% Polyester	0.75"		No	Yes	\$22.90
BD107 BORDER 3/8"	78% Acrylic 11% Polyester 6% Cotton 5% Nylon	0.38"		No	Yes	\$12.90
BD108 BORDER 3.125"	95% Rayon 5% Polyester	3.13"		No	No	\$94.90
BD109 BORDER 3.375"	100% Polyester	3.38"		No	No	\$49.90
BD110 BORDER 2.875"	99% Rayon 1% Polyester	2.88"		No	No	\$103.90
BD111 3.25" Border	Base: 100% Cotton Embroidery: 100% Polyester	3.25"	1"	No	Yes	\$69.90
BD112 4.75" Border	Base: 100% Linen Embroidery: 100% Rayon	4.75"	7.85"	No	Yes	\$69.90
BD113 5" Border	Base: 100% Linen Embroidery: 100% Rayon	5"	3.95"	No	Yes	\$79.90
BD114 5" Border	Base: 100% Linen Embroidery: 100% Polyester	5"	7.85"	No	Yes	\$79.90
BD115 2.85" Border	Base: 100% Linen Embroidery: 100% Rayon	2.85"	3.95"	No	Yes	\$69.90
BD116 3" Border	Base: 100% Linen Embroidery: 100% Polyester	3"	2.6"	No	Yes	\$79.90
BD117 5" Border	Base: 100% Linen Embroidery: 100% Rayon	5"		No	Yes	\$89.90
BD118 Border 4"	100% Cotton Base 100% Rayon Embroidery	4"	3.75"	No	No	\$49.90
BD119 Border 4"	100% Cotton Base 100% Rayon Embroidery	4"	3.75"	No	No	\$67.90
BD120 Border 4"	100% Cotton Base 100% Rayon Embroidery	4"	5"	No	No	\$67.90
BD121 4" Border	100% Cotton Base 100% Rayon Embroidery	4"	3"	No	No	\$67.90
BD122 Border 4"	100% Cotton Base 100% Rayon Embroidery	4"	0.75"	No	No	\$67.90
BD123 Border 2.5"	100% Cotton Base 100% Rayon Embroidery	2.5"	1.5"	No	No	\$61.90
BD125 Border 4"	100% Cotton Base 100% Rayon Embroidery	4"	1.25"	No	No	\$49.90
BD126 Border 4"	100% Cotton Base 100% Rayon Embroidery	4"	1.75"	No	No	\$73.90
BD127 Border 4"	100% Cotton Base 100% Rayon Embroidery	4"	2.5"	No	No	\$67.90
BD128 Border 4"	100% Cotton Base 100% Rayon Embroidery	4"	7.5"	No	No	\$79.90

Prices are effective as of 7/1/2026 and are subject to change without notice.

Pattern Name	Fiber Content	Width	Vertical Repeat	Fire Retardant	Exclusive	Suggested Retail
BD129 Border 4"	100% Cotton Base 100% Rayon Embroidery	4"	1.25"	No	No	\$49.90
BD130 Border 4"	100% Cotton Base 100% Rayon Embroidery	4"	3"	No	No	\$49.90
BD131 Border 4"	100% Cotton Base 100% Rayon Embroidery	4"	3.75"	No	No	\$67.90
BD132 Border 4"	100% Cotton Base 100% Rayon Embroidery	4"	2.5"	No	No	\$67.90
BD133 Border 7"	58% Rayon 31% Polyester 11% Linen	7"	13.5"	Yes	No	\$99.90
BD134 Border 3.5"	58% Rayon 31% Polyester 11% Linen	3.5"	4"	Yes	No	\$59.90
BD135 Border 3.5"	58% Rayon 31% Polyester 11% Linen	3.5"	7.5"	Yes	No	\$59.90
BD136 Border 4.3"	75% Polyester 25% Cotton	4"	4"	No	No	\$83.90
BD137 Border 4.7"	75% Polyester 25% Cotton	4.7"	5"	No	No	\$83.90
BD138 Border 4.7"	75% Polyester 25% Cotton	4.7"	7.5"	No	No	\$83.90
BD139 Border 3"	75% Polyester 25% Cotton	3"	2"	No	No	\$83.90
BD140 Border 3.5"	75% Polyester 25% Cotton	3.5"	2.75"	No	No	\$83.90
BD141 Border 4.3"	75% Polyester 25% Cotton	4.3"	7.5"	No	No	\$83.90
BD142 Border 4.7"	75% Polyester 25% Cotton	4.7"	3.75"	No	No	\$83.90
BD143 Border 4.7"	75% Polyester 25% Cotton	4.7"	7.5"	No	No	\$83.90
BD144 Border 4.3"	75% Polyester 25% Cotton	4.3"	7.5"	No	No	\$83.90
BD145 Border 4.3"	75% Polyester 25% Cotton	4.3"	5"	No	No	\$83.90
BD146 Border 4.7"	75% Polyester 25% Cotton	4.7"	1.75"	No	No	\$83.90
BD147 Border 5.1"	75% Polyester 25% Cotton	5.1"	1"	No	No	\$83.90
BD148 Border 4.3"	75% Polyester 25% Cotton	4.3"	3"	No	No	\$83.90
BD149 Border 4.7"	75% Polyester 25% Cotton	4.7"	3"	No	No	\$83.90
BD150 Border 4.3"	75% Polyester 25% Cotton	4.3"	2.75"	No	No	\$83.90
BF101 BRUSH FRINGE 1 7/8"	93% Acrylic 7% Polyester	1.88"		No	Yes	\$26.90
BF102 BRUSH FRINGE 1 3/16"	89% Acrylic 11% Polyester	1.19"		No	Yes	\$24.90
BF103 FRINGE 2"	100% Acrylic	2"		No	Yes	\$126.90
LC101 LIPCORDER .5"	60% Cotton 32% Acrylic 8% Polyester	0.5"		No	Yes	\$26.90
LC102 LIPCORDER 3/8"	57% Acrylic 43% Cotton	0.38"		No	Yes	\$30.90
LC103 LIPCORDER .25"	39% Cotton 39% Acrylic 21% Polyester 11% Nylon	0.25"		No	Yes	\$13.90
ROUCHE				No	Yes	\$68.90
T1000 LIPCORDER				No	Yes	\$15.90
T1001 BRUSH FRINGE				No	Yes	\$27.90
T1002 GIMP				No	Yes	\$15.90
T1003 SCALLOP FRINGE				No	Yes	\$23.00
T1004 TASSEL FRINGE				No	Yes	\$63.00
T1006 BULLION				No	Yes	\$72.90
T1007 TIEBACK				No	Yes	\$113.90
T1008 KEY TASSEL				No	Yes	\$49.90
T1009 CHAIR TIE				No	Yes	\$37.90
T1010 CUSHION TASSEL				No	Yes	\$12.50
T1020 DECORATIVE CORD				No	Yes	\$17.90
T1021 DEC.CORD WITH LIP				No	Yes	\$19.90
T1022 BRUSH FRINGE				No	Yes	\$23.90
T1023 BRUSH FRINGE W/TASSEL				No	Yes	\$43.90
T1024 HAND TIED TASSEL FRNG				No	Yes	\$51.90
T1025 TASSEL FRINGE				No	Yes	\$43.90
T1026 BULLION FRINGE				No	Yes	\$44.90
T1027 FRINGE WITH TASSEL				No	Yes	\$86.90
T1028 CHAIR TIE				No	Yes	\$49.90

Prices are effective as of 7/1/2026 and are subject to change without notice.

Pattern Name	Fiber Content	Vertical Width	Repeat	Fire Retardant	Exclusive	Suggested Retail
T1029 KEY TASSEL				No	Yes	\$36.90
T1030 TIEBACK TASSEL				No	Yes	\$256.90
T1040 LIPCORDER				No	Yes	\$33.90
T1041 BRAID				No	Yes	\$38.90
T1043 TASSEL FRINGE				No	Yes	\$119.90
T1044 BRAID				No	Yes	\$30.90
T1046 KEY TASSEL				No	Yes	\$53.90
T1047 CHAIR TIE				No	Yes	\$68.90
T1050 LIPCORDER				No	Yes	\$14.90
T1051 LIPCORDER				No	Yes	\$19.90
T1052 LOOPED ROUCHE				No	Yes	\$59.90
SEND SFA						
T1053 BORDER				No	Yes	\$30.90
T1054 GIMP				No	Yes	\$16.00
T1055 TASSEL FRINGE				No	Yes	\$65.50
T1056 BULLION 4				No	Yes	\$54.90
T1057 BULLION 6				No	Yes	\$67.90
T1058 TIEBACK				No	Yes	\$190.90
T1059 KEY TASSEL				No	Yes	\$69.90
T1060				No	Yes	\$47.90
T1061				No	Yes	\$30.90
T1062				No	Yes	\$30.90
T1063				No	Yes	\$37.90
T1064				No	Yes	\$39.90
T1070 DECORATIVE CORD				No	Yes	\$35.90
T1071 LIPCORDER				No	Yes	\$36.90
T1072 GIMP				No	Yes	\$35.90
T1073 BRUSH FRINGE				No	Yes	\$76.30
T1074 TASSEL FRINGE				No	Yes	\$218.90
T1075 BULLION FRINGE				No	Yes	\$279.90
T1076 KEY TASSEL				No	Yes	\$121.20
T1077 TIEBACK TASSEL				No	Yes	\$383.90
T1080 LIPCORDER				No	Yes	\$24.90
T1081 BRUSH FRINGE				No	Yes	\$74.90
T1084 FURNITURE FRINGE				No	Yes	\$124.90
T1085 TIEBACK				No	Yes	\$143.90
T1086 CHAIR TIE				No	Yes	\$53.90
T1087 KEY TASSEL				No	Yes	\$30.90
T1090 LIPCORDER				No	Yes	\$19.90
T1091 LIPCORDER				No	Yes	\$30.00
T1092 BRAID				No	Yes	\$18.90
T1093 CURLY ROUCHE				No	Yes	\$101.90
T1094 TASSEL FRINGE				No	Yes	\$77.00
T1095 BEADED FRINGE				No	Yes	\$102.00
T1096 BULLION				No	Yes	\$67.90
T1097 FURNITURE FRINGE				No	Yes	\$123.90
T1098 TIEBACK				No	Yes	\$148.90
T1099 CHAIRTIE				No	Yes	\$73.90
T1100 KEY TASSEL				No	Yes	\$38.90
T1101 BUTTON				No	Yes	\$22.90
T1111 KEY TASSEL				No	Yes	\$48.90
T1112 CUSH.TASSEL				No	Yes	\$17.90
T1113 BEAD TIEBACK				No	Yes	\$129.90
T1114 TASSEL FRINGE				No	Yes	\$199.90
T1116 FLAT TAPE				No	Yes	\$17.90
T1118 BRAIDED LIPCO				No	Yes	\$28.90
T1119 BRUSH FRINGE				No	Yes	\$114.90
T1130 BRUSHED FRINGE				No	Yes	\$53.90
T1131 BULLION FRINGE				No	Yes	\$51.90
T1132 TASSEL FRINGE				No	Yes	\$37.90
T1133 LIPCORDER 6MM				No	Yes	\$11.90

Prices are effective as of 7/1/2026 and are subject to change without notice.

Pattern Name	Fiber Content	Vertical Width	Repeat	Fire Retardant	Exclusive	Suggested Retail
T1134 LIPCORDER 12MM				No	Yes	\$14.90
T1135 TIE BACK TASSEL				No	Yes	\$101.90
T1136 CHAIR TIE				No	Yes	\$24.90
T1137 KEY TASSEL				No	Yes	\$36.90
T1150 LIPCORDER 6MM				No	Yes	\$18.90
T1151 LIPCORDER 12MM				No	Yes	\$20.90
T1152 BORDER				No	Yes	\$27.90
T1153 BULLION FRINGE 4				No	Yes	\$80.90
T1154 BRUSH FRINGE	100% Rayon			No	Yes	\$24.90
T1155 TASSEL FRINGE				No	Yes	\$43.90
T1156 KEY TASSEL				No	Yes	\$42.90
T1157 TIEBACK TASSEL				No	Yes	\$125.90
T1158 CHAIR TIE				No	Yes	\$38.90
TB100 TIEBACK 9.25"	59% Acrylic 41% Cotton	9.25"		No	Yes	\$182.90
TB101 TIEBACK 37"	64% Acrylic 31% Cotton 5% Polyester	37"		No	Yes	\$104.90
TF100 TASSEL FRINGE 1.875"	100% Acrylic	1.88"		No	Yes	\$78.90
TS100 TASSEL 5"	100% Acrylic	5"		No	Yes	\$35.90

Prices are effective as of 7/1/2026 and are subject to change without notice.



Retail Lining Prices

Effective July 1, 2026

(Prices subject to change without notice)

800-325-8025

* 100% Cotton Linings *

Style	Item Number	Rating	Colors	Width	Contents	Cut Retail	Average Bolt Size	Bolt Retail	Bulk Qty Yards	Quantity Retail	Bulk Qty Yards	Quantity Retail
COCO Weather Guard	330	Good	White & Ivory	54"	100% Cotton	\$15.38	100	\$9.38	300	\$8.98	500	\$8.58
RM Designer Deluxe Cotton Sateen	362	Best	White, Ivory & Tusk	54"	100% Cotton	\$15.90	80	\$9.90	240	\$9.50	400	\$9.10
RM Designer Deluxe Cotton Sateen	362	Best	Black	54"	100% Cotton	\$19.90	80	\$13.90	240	\$13.50	400	\$13.10

* 100% Cotton Wide-Width Linings *

RM Designer Napped Sateen	372	Best	White & Pale Ivory	108"	100% Cotton	\$27.20	40	\$21.20	120	\$20.80	200	\$20.40
RM Designer Deluxe Cotton Sateen	371	Best	White & Pale Ivory	108"	100% Cotton	\$25.90	40	\$19.90	120	\$19.50	200	\$19.10

* Blended Linings *

RM Designer Everyday Lining	357	Good	White & Pale Ivory	54"	70% Polyester 30% Cotton	\$10.96	100	\$4.96	300	\$4.56	500	\$4.16
RM Designer Super Sateen	359	Better	White & Pale Ivory	54"	52% Cotton 48% Polyester	\$12.40	100	\$6.40	300	\$6.00	500	\$5.60
RM Designer Royal Satin	354	Best	White, Pale Ivory & Tusk	54"	52% Cotton 48% Polyester	\$15.90	100	\$9.90	300	\$9.50	500	\$9.10
RM Designer Recycled Royal Satin	364	Best +	White & Pale Ivory	54"	52% Cotton 48% Polyester	\$15.90	100	\$9.90	300	\$9.50	500	\$9.10

* Blended Wide-Width Linings *

RM Designer Panarama	400	Good	White & Pale Ivory	115"	70% Polyester 30% Cotton	\$17.90	100	\$11.90	300	\$11.50	500	\$11.10
RM Designer Super Sateen	361	Better	White & Pale Ivory	108"	52% Cotton 48% Polyester	\$18.90	50	\$12.90	150	\$12.50	250	\$12.10
RM Designer Royal Satin	373	Best	White	108"	52% Cotton 48% Polyester	\$22.90	50	\$16.90	150	\$16.50	250	\$16.10

* 100% Cotton Interlinings *

RM Designer Interlining	355	Good	White & Natural	54"	100% Cotton	\$13.90	70	\$7.90	210	\$7.50	350	\$7.10
RM Designer Heavy Flannel	356	Good	White & Natural	54"	100% Cotton	\$15.90	70	\$9.90	210	\$9.50	350	\$9.10
RM Designer English Domette	369	Better	White	54"	100% Cotton	\$18.90	50	\$12.90	150	\$12.50	250	\$12.10
RM Designer English Domette	369	Better	Natural	54"	100% Cotton	\$16.90	50	\$10.90	150	\$10.50	250	\$10.10
RM Designer Napped Sateen	358	Best	White & Pale Ivory	54"	100% Cotton	\$16.20	80	\$10.20	240	\$9.80	400	\$9.40
RM Designer Bump Cloth	360	Best	White	54"	100% Cotton	\$23.90	50	\$17.90	150	\$17.50	250	\$17.10
RM Designer Bump Cloth	360	Best	Natural	54"	100% Cotton	\$21.90	50	\$15.90	150	\$15.50	250	\$15.10
R&M Table Felt	301	Best	Natural	54"	100% Cotton	\$35.90	50	\$29.90	150	\$29.50	250	\$29.10

* 100% Cotton Wide-Width Interlinings *

RM Designer Interlining	374	Good	White & Natural	108"	100% Cotton	\$20.90	40	\$14.90	120	\$14.50	200	\$14.10
-------------------------	-----	------	-----------------	------	-------------	---------	----	---------	-----	---------	-----	---------

* Blended Interlinings *

RM Designer Interlined Sateen	367	Better	White & Pale Ivory	54"	52% Cotton 48% Polyester	\$22.90	25	\$16.90	75	\$16.50	125	\$16.10
RM Designer Why Tex Interlining	370	Better	Natural	54"	90% Cotton 10% Polyester	\$19.90	50	\$13.90	150	\$13.50	250	\$13.10

* Thermal Linings *

RM Designer Thermofoam 1 Pass Non-FR Thermal	353	Good	White & Pale Ivory	55"	100% Polyester	\$13.60	75	\$7.60	225	\$7.20	375	\$6.80
--	-----	------	--------------------	-----	----------------	---------	----	--------	-----	--------	-----	--------

* Blackout Linings *

RM Designer 3 Pass Non-FR Outblack	351	Better	White	54"	100% Polyester	\$17.50	55	\$11.50	165	\$11.10	275	\$10.70
RM Designer Double-Sided Microfiber Non-FR Blackout	365	Better +	Ivory/White	54"	100% Polyester	\$20.90	55	\$14.90	165	\$14.50	275	\$14.10
RM Designer Energy Reflecting 3 Pass Non-FR Blackout	366	Best	Silver/White	55"	100% Polyester	\$32.90	55	\$26.90	165	\$26.50	275	\$26.10
RM Designer Microfiber Interlined 3 Pass Non-FR Blackout	368	Best	White & Pale Ivory	54"	100% Polyester	\$25.90	25	\$19.90	75	\$19.50	125	\$19.10
RM Designer Lite-Tech Non-FR Blackout	376	Best	White & Pale Ivory	55"	100% Polyester	\$17.90	70	\$11.90	210	\$11.50	350	\$11.10

* Fire Retardant Linings/Blackout Linings *

RM Designer Sapphire Deluxe Cotton FR Sateen	378	Best	White	54"	100% BCI Cotton	\$18.90	85	\$12.90	255	\$12.50	425	\$12.10
RM Designer Flame'trol 3 Pass FR Blackout	352	Better	White & Pale Ivory	55"	100% Polyester	\$20.98	55	\$14.98	165	\$14.58	275	\$14.18

Jalisco - White

A two-way slubbed multi-purpose 100% cotton fabric with the look of linen. (6.5 oz)

\$34.95 / printed yard

Organic Cotton Sateen - White

A beautiful multi-purpose 100% organic cotton sateen fabric. A perfect choice for fine detail print designs. (6.5 oz)

\$29.95 / printed yard

Portside Cotton Duck - White Cap

This is a classic 100% cotton duck fabric that is durable and timeless. (6.5 oz)

\$29.95 / printed yard

Harbor Club - Muslin

This handsome linen-blend fabric that is perfect for transitional designs. Natural linter flecking adds to the texture of this fabric. (7 oz)

\$34.95 / printed yard

Costello - Natural

This heavy weight, multi-purpose textured fabric is a blend of cotton and linen. (10.5 oz)

\$39.95 / printed yard

Costello - White

This heavy weight, multi-purpose textured fabric is a blend of cotton and linen. (10.5 oz)

\$39.95 / printed yard

Alicante - Natural

A medium weight, multi-purpose textured fabric is a handsome blend of cotton and linen. (6.8 oz)

\$34.95 / printed yard

Sailaway - Winter White

This is a classic 100% organic cotton duck fabric that is durable and timeless. (9.25 oz)

\$34.95 / printed yard

Fernando - White

A rugged, heavy weight 100% cotton fabric. A perfect choice for upholstery, or wherever a more durable fabric is needed. (11.8 oz)

\$39.95 / printed yard

Ontario - White

A one-way slubbed multi-purpose 100% cotton fabric with the look of linen. (8.3 oz)

\$34.95 / printed yard

Valencia - Natural

This multi-purpose fabric is a beautiful blend of viscose and linen. A perfect choice for drapery, upholstery and accessory usage. (11.7 oz)

\$44.95 / printed yard

Valencia - White

This multi-purpose fabric is a beautiful blend of viscose and linen. A perfect choice for drapery, upholstery and accessory usage. (11.7 oz)

\$44.95 / printed yard

Perception - Pearl

This 100% silk fabric is the perfect choice for luxurious drapery treatments. (2.5 oz)

\$79.95 / printed yard

Bruges - White Optic

A multi-purpose 100% linen fabric for draperies, accessories and light weight upholstery. (7 oz)

\$49.95 / printed yard

Villa - White

A multi-purpose 100% polyester knitted velvet that drapes beautifully. (8.5 oz)

\$34.95 / printed yard

RM COCO™

HARDWARE BRANDS

CONTACT CUSTOMER SERVICE OR YOUR RM COCO SALES REPRESENTATIVE
FOR MORE INFORMATION OR VISIT RMCOCO.COM/HARDWARE-BRANDS



COCO Deco

COCO Deco hardware combines styling, craftsmanship, innovation and quality with outstanding value. Handcrafted from authentic materials, the hardware comes in complete sets making it easy to order and install.

THE FINIAL COMPANY™

For any design you envision, The Finial Company™ can make it a reality. From one-of-a-kind creations to our broad mix of hand-crafted drapery hardware collections, you will never be limited by design styles, finish selections, window shapes or unusual floor plans.



PTH

PARIS TEXAS HARDWARE™

Whether it's a Modern finial silhouette that has never been seen before, a Heritage Classic with a new twist or a customized traverse solution integrated with the latest smart home technology, we promise to provide you with something different – a collective style that you cannot find anywhere else in the world designed to inspire.



AriA[®]

Metal Hardware

The AriA[®] Metal Hardware line offers trend-right designer hardware collections across two pole diameter options providing a beautiful range of finial designs and a full line of coordinating accessories.



The Finestra[®] Wood Hardware collection offers the perfect combination of classic finial designs in 2" and 1 3/8" diameters and furniture-quality finishes that coordinate seamlessly with decorative elements throughout the home.



FOREST

— DRAPERY HARDWARE —

With high quality hardware available in a wide range of materials including aluminum, brass, steel, and solid wood, you can choose from the latest designer finishes!

Forest Drapery Hardware also carries beautiful roller shades.

CDH Decorative

The CDH Decorative Hardware line brings sophistication, versatility, and trend setting design to your drapery solutions.





TEXTILE FINISHING SERVICES

TREATMENT	1-20 YARDS MINIMUM CHARGE	OVER 20 YARDS COST PER YARD
SOIL & STAIN REPELLENT	\$140.00	\$7.00
FLAME RETARDANCY NFPA 701/260	\$160.00	\$8.00
FLAME RETARDANCY WITH SOIL & STAIN REPELLENT	\$220.00	\$11.00
ACRYLIC BACKING NON-FLAME RETARDANT	\$300.00	\$15.00
ACRYLIC BACKING TO PASS NFPA 260	\$360.00	\$18.00
MILDEW RESISTANCE	\$220.00	\$11.00
ANTI-MICROBIAL	\$220.00	\$11.00
GREENSHIELD	\$230.00	\$11.50

TREATMENT		
FLAME RETARDANCY NFPA 701/260	DECORATIVE TRIM	\$11.00/yd
	TIEBACKS	\$17.00/ea
	TASSELS	\$11.00/ea

- Please specify fire retardancy code on flame retardancy finishes.
- Allow a 5% working loss on all Flame Retardant or GreenShield finishes. Allow 1/4 yard on all orders
- No charge for approval sample to show color & hand
- Please allow approximately 2 weeks for finishing services
- Textile Finishes are not yet available to order online, please contact customer service
- No returns allowed after fabric has been treated
- COM fabric accepted - must be inspected prior to shipping to RM COCO
- Release form must be acknowledged or returned before order can be submitted
- Rush orders available upon request; additional fee may apply

The chemical properties of any textile finish have different effects on the various types of fabrics and dyes. RM COCO cannot be held responsible for the color fastness or dye quality of any fabric you order treated. Additionally, we are not responsible for loss of tensile strength, fabric stability, corrosion or rusting of metal in contact with the treated fabric during this process.



TEXTILE FINISH GLOSSARY

SOIL & STAIN REPELLENT	This finish is sprayed onto the face of the fabric and repels oil, water and dirt borne stains. This finish is durable to steam cleaning and shampoo cleaning.
FLAME RETARDANCY 701	Flame Retardancy 701 finishing is a water based application to meet the strict fire codes on vertical hanging fabrics in public places, aircraft, nursing homes and hospitals. Flame Retardants are non-toxic and safe for the environment. They are also durable to solvent based dry cleaning, but are removed in laundering.
FLAME RETARDANCY 260	This finish is applied to the back of the fabric in a water based application. Because only the back of the fabric is treated, the face of the fabric is not affected in any way. This code is used for fabrics on upholstered furniture.
FLAME RETARDANCY WITH SOIL & STAIN REPELLENT	This is a combination of both Flame Retardancy and Stain Repellent finishes.
ACRYLIC BACKING	This is a flexible acrylic latex applied to the back of the fabric. It increases the stability of the fabric and helps to keep the fabric from unraveling. Acrylic backing gives upholstery fabric dimensional stability and also prevents seam slippage.
ACRYLIC BACKING WITH FLAME RETARDANCY	This finish has the same advantages of an Acrylic Backing with Flame Retardancy ingredients added to have the fabric pass the NFPA 260 upholstery standard.
MILDEW RESISTANCE	This is a water based product used to protect the fabric against mold and mildew. This is recommended for use on 'outdoor' fabric as well as fabrics in warm and humid environments.
ANTIMICROBIAL FINISH	This is a water based finish used in hospitals and health care settings to kill or slow the growth of many bacteria and some viruses.
GREENSHIELD	GreenShield® is a stain repellent finish that has improved environmental characteristics. This water based finish uses nano technology to repel all water borne, oil borne and dirt stains. GreenShield® is not recommended for velvets and other delicate fabrics. Solvent based finishes are available for these fabrics; however they do not possess nano technology.



P A N E L P R O G R A M P R I C E L I S T

Effective July 2026

Prices are subject to change without notice.
Visit <https://rmcoco.com/customer-resources/> for latest pricelists.



CUSTOM PANEL PROGRAM

Suggested Retail Pricing | No Other Discounts Apply | July 2026

STYLES & SPECIFICATIONS

PLEATED



Two Prong



Three Prong



Two Prong Tacked at Top



Three Prong Tacked at Top

Pleated Standard Features

- 2½ x's fullness
- 2 Prong - 1 width pleats to approximately 24" and has approximately 6 pleats per width
- 3 Prong - 1 width pleats to approximately 20" and has approximately 5 pleats per width
- Lined with RM Designer Super Sateen - white or ivory
- Bottom Hem - 4" double turned blind stitched
- Side Hem - 1 1/2" double turned blind stitched
- Pin setting up to 1 3/4"
- Matched thread
- Cloth covered weights in hem corners

Pleated Required Ordering Information

- Fabric
- Fabric Color
- Lining/Color: RM Designer Super Sateen or Blackout for surcharge
- Quantity of Panels or Pairs
- Widths per Panel or Pair and L/R Return Size
- Finished Length
- Pin Setting
- Pleat Style

SHIRRED



Shirred

Shirred Standard Features

- 2½ x's fullness
- Top Heading and Top Pocket
- Lined with RM Designer Super Sateen - white or ivory
- Bottom Hem - 4" double turned blind stitched
- Side Hem - 1 1/2" double turned blind stitched
- Matched thread
- Cloth covered weights in hem corners

Shirred Required Ordering Information

- Fabric
- Fabric Color
- Lining/Color: RM Designer Super Sateen or Blackout for surcharge
- Quantity of Panels or Pairs
- Widths per Panel or Pair
- Finished Length
- Pocket and Header Size

GROMMETED



Grommet

Grommet Top Standard Features

- 8 grommets per width
- Lined with RM Designer Super Sateen - white or ivory
- Heading - 4" turned with crinoline
- 3/4" Header above grommet
- Bottom Hem - 4" double turned blind stitched
- Side Hem - 1 1/2" double turned blind stitched
- Matched thread
- Cloth covered weights in hem corners

Grommet Top Required Ordering Information

- Fabric
- Fabric Color
- Lining/Color: RM Designer Super Sateen or Blackout for surcharge
- Quantity of Panels or Pairs
- Widths per Panel or Pair
- Finished Length (from top of panel)
- Grommet Size
- Grommet Color

Grommet Sizes

- Inside diameter of opening
- 1 5/8"
- 2"

Grommet Colors

- Antique Brass
- Copper
- Matte Black
- Brass
- Brushed Steel
- Matte Nickel
- Oil Rubbed Bronze
- Nickel
- Satin Smoke
- Shiny Nickel

ONLINE ORDERING AVAILABLE AT [HTTPS://RMCOCO.COM/SHOP/PROMO](https://rmcoco.com/shop/promo)

TO ORDER: 800.325.8025 OPTION 1 | FAX: 800.501.6810 | EMAIL: CUSTOMCREATIONS@RMCOCO.COM



CUSTOM PANEL PROGRAM

Suggested Retail Pricing | No Other Discounts Apply | July 2026

			Finished Length to 84"			Finished Length to 96"			Finished Length to 108"			Finished Length to 120"		
			1 Width Panel	2 Width Panel or Pair	4 Width Pair	1 Width Panel	2 Width Panel or Pair	4 Width Pair	1 Width Panel	2 Width Panel or Pair	4 Width Pair	1 Width Panel	2 Width Panel or Pair	4 Width Pair
Linen Blends & Textures	Barrister	80% Polyester, 20% Linen Herringbone Solid	\$298	\$547	\$994	\$313	\$573	\$1,042	\$339	\$622	\$1,132	\$368	\$675	\$1,228
	Bruges	100% Linen Medium Weight Linen	\$403	\$740	\$1,345	\$425	\$780	\$1,418	\$461	\$846	\$1,538	\$505	\$926	\$1,684
	Harbor Club	80% Polyester, 20% Linen Slubbed Linen Blend Texture	\$275	\$504	\$917	\$288	\$527	\$959	\$313	\$573	\$1,042	\$338	\$619	\$1,126
	Landen	95% Polyester, 5% Linen Casual Linen Blend Texture	\$336	\$615	\$1,118	\$353	\$647	\$1,177	\$383	\$702	\$1,277	\$418	\$767	\$1,394
	Monte Carlo	100% Polyester Cross Hatched Faux Linen	\$289	\$531	\$965	\$303	\$556	\$1,011	\$329	\$604	\$1,098	\$357	\$654	\$1,190
	Saint Tropez	100% Polyester Faux Linen Solid	\$301	\$552	\$1,003	\$316	\$579	\$1,052	\$343	\$629	\$1,143	\$372	\$682	\$1,241
	Smart Move	100% Polyester Pearlescent Solid Texture	\$324	\$594	\$1,080	\$341	\$625	\$1,136	\$370	\$678	\$1,232	\$403	\$739	\$1,343
	Strata	76% Viscose, 24% Linen Vertical Strié Texture	\$387	\$710	\$1,290	\$408	\$749	\$1,361	\$443	\$812	\$1,476	\$485	\$890	\$1,618
	Sutton	100% Polyester Faux Linen Twill	\$310	\$568	\$1,032	\$325	\$596	\$1,084	\$353	\$647	\$1,176	\$384	\$704	\$1,279
Classics & Velvet	Contessa	100% Polyester Faux Silk Solid Texture	\$303	\$555	\$1,010	\$317	\$580	\$1,055	\$344	\$631	\$1,147	\$371	\$681	\$1,238
	Keepsakes	100% Polyester Transitional Drapery Texture	\$384	\$704	\$1,280	\$404	\$741	\$1,348	\$439	\$804	\$1,462	\$479	\$879	\$1,598
	Prelude	100% Polyester Transitional Drapery Texture	\$290	\$532	\$967	\$303	\$555	\$1,008	\$329	\$603	\$1,097	\$354	\$649	\$1,180
	Villa	100% Polyester Plush Velvet Solid	\$382	\$700	\$1,273	\$396	\$726	\$1,320	\$424	\$777	\$1,413	\$452	\$829	\$1,508
Light Control Fabrics	Eventide	100% Polyester Unlined Dimmer Drapery Textures	\$435	\$797	\$1,448	\$459	\$842	\$1,530	\$498	\$912	\$1,659	\$547	\$1,002	\$1,822
	Illusion	100% Polyester Unlined Dimmer Drapery Textures	\$451	\$826	\$1,502	\$477	\$874	\$1,589	\$516	\$947	\$1,722	\$568	\$1,042	\$1,894
	Nightfall	100% Polyester Unlined Dimmer Drapery Textures	\$464	\$850	\$1,546	\$491	\$900	\$1,635	\$532	\$975	\$1,772	\$586	\$1,074	\$1,952
	Phantom	100% Polyester Unlined Dimmer Drapery Textures	\$447	\$820	\$1,492	\$473	\$867	\$1,577	\$513	\$940	\$1,709	\$564	\$1,034	\$1,880
	Stardust	100% Polyester Unlined Dimmer Drapery Textures	\$402	\$737	\$1,340	\$424	\$777	\$1,413	\$460	\$843	\$1,533	\$503	\$923	\$1,678
	Sunset	100% Polyester Unlined Dimmer Drapery Textures	\$386	\$707	\$1,286	\$406	\$745	\$1,355	\$441	\$808	\$1,470	\$482	\$883	\$1,606
	Twilight	100% Polyester Unlined Dimmer Drapery Textures	\$376	\$690	\$1,254	\$396	\$726	\$1,320	\$430	\$788	\$1,432	\$469	\$860	\$1,563
	Umbra	100% Polyester Unlined Dimmer Drapery Textures	\$451	\$826	\$1,502	\$477	\$874	\$1,589	\$516	\$947	\$1,722	\$568	\$1,042	\$1,894
	Vestige	100% Polyester Unlined Dimmer Drapery Textures	\$431	\$791	\$1,438	\$456	\$835	\$1,518	\$494	\$905	\$1,646	\$542	\$994	\$1,808
	Eventide	100% Polyester Lined Dimmer Drapery Textures	\$465	\$852	\$1,550	\$492	\$902	\$1,640	\$533	\$977	\$1,777	\$587	\$1,077	\$1,958
	Illusion	100% Polyester Lined Dimmer Drapery Textures	\$481	\$882	\$1,604	\$510	\$934	\$1,699	\$552	\$1,012	\$1,840	\$609	\$1,116	\$2,030
	Nightfall	100% Polyester Lined Dimmer Drapery Textures	\$494	\$906	\$1,647	\$524	\$960	\$1,745	\$567	\$1,040	\$1,890	\$626	\$1,148	\$2,087
	Phantom	100% Polyester Lined Dimmer Drapery Textures	\$478	\$876	\$1,593	\$506	\$928	\$1,687	\$548	\$1,005	\$1,827	\$605	\$1,108	\$2,015
	Stardust	100% Polyester Lined Dimmer Drapery Textures	\$433	\$793	\$1,442	\$457	\$838	\$1,523	\$495	\$908	\$1,651	\$544	\$997	\$1,814
	Sunset	100% Polyester Lined Dimmer Drapery Textures	\$416	\$763	\$1,388	\$439	\$806	\$1,465	\$476	\$873	\$1,588	\$522	\$958	\$1,742
	Twilight	100% Polyester Lined Dimmer Drapery Textures	\$407	\$746	\$1,355	\$429	\$786	\$1,430	\$465	\$853	\$1,550	\$510	\$934	\$1,698
	Umbra	100% Polyester Lined Dimmer Drapery Textures	\$481	\$882	\$1,604	\$510	\$934	\$1,699	\$552	\$1,012	\$1,840	\$609	\$1,116	\$2,030
	Vestige	100% Polyester Lined Dimmer Drapery Textures	\$462	\$846	\$1,539	\$489	\$896	\$1,628	\$529	\$970	\$1,764	\$583	\$1,069	\$1,943

	Finished Length to 84"			Finished Length to 96"			Finished Length to 108"			Finished Length to 120"		
	1 Width Panel	2 Width Panel or Pair	4 Width Pair	1 Width Panel	2 Width Panel or Pair	4 Width Pair	1 Width Panel	2 Width Panel or Pair	4 Width Pair	1 Width Panel	2 Width Panel or Pair	4 Width Pair
Grommet Top (Add to Panel Price)	\$108	\$215	\$430	\$108	\$215	\$430	\$108	\$215	\$430	\$108	\$215	\$430
Blackout Lining (Add to Panel Price)	\$70	\$140	\$281	\$76	\$152	\$304	\$82	\$164	\$328	\$94	\$187	\$374

ONLINE ORDERING AVAILABLE AT [HTTPS://RMCOCO.COM/SHOP/PROMO](https://rmcoco.com/shop/promo)

TO ORDER: 800.325.8025 OPTION 1 | FAX: 800.501.6810 | EMAIL: CUSTOMCREATIONS@RMCOCO.COM



CUSTOM PANEL PROGRAM

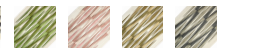
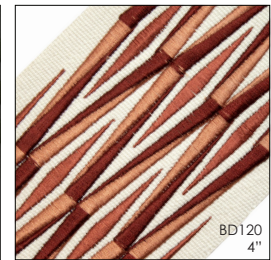
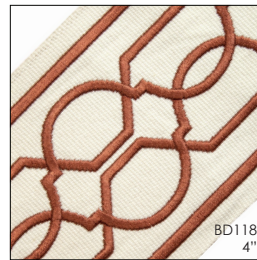
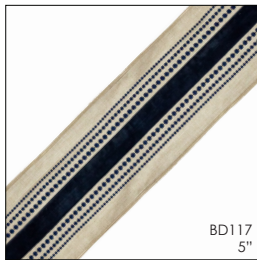
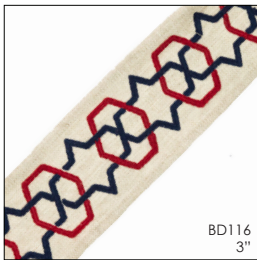
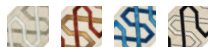
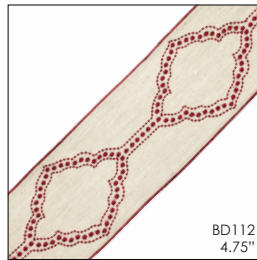
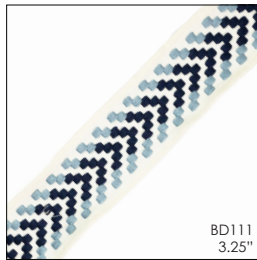
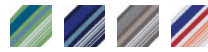
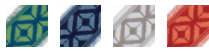
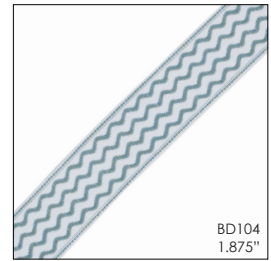
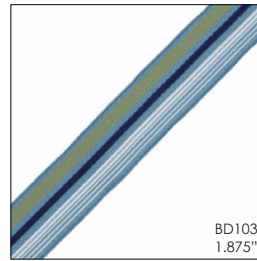
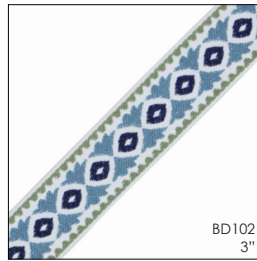
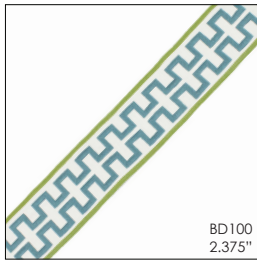
Suggested Retail Pricing | No Other Discounts Apply | July 2026

ELIGIBLE TRIM OPTIONS

Trim on Leading Edges - Labor (add labor per vertical application and cost of trim to panel price - see trim costs below)	Length to	48"	60"	72"	84"	96"	108"	120"
	Labor per Vertical Row	\$64	\$74	\$86	\$106	\$118	\$128	\$150
	Ydg Required	1.50	2.00	2.25	2.50	3.00	3.25	3.75

Select RM COCO trims only. Trim is top stitched on vertical edge only, no horizontal application or inserted trim.

Pattern	Collection	Retail/ Yard	Pattern	Collection	Retail/ Yard	Pattern	Collection	Retail/ Yard	Pattern	Collection	Retail/ Yard
BD100	Bahama Breeze	\$58.90	BD111	Artisano	\$69.90	BD119	Creative Threads II	\$67.90	BD128	Creative Threads IV	\$79.90
BD101	Bahama Breeze	\$50.90	BD112	Artisano	\$69.90	BD120	Creative Threads II	\$67.90	BD129	Creative Threads IV	\$49.90
BD102	Bahama Breeze	\$48.90	BD113	Artisano	\$79.90	BD121	Creative Threads II	\$67.90	BD130	Creative Threads IV	\$49.90
BD103	Bahama Breeze	\$28.90	BD114	Artisano	\$79.90	BD122	Creative Threads III	\$67.90	BD131	Creative Threads IV	\$67.90
BD104	Bahama Breeze	\$53.90	BD115	Artisano	\$69.90	BD123	Creative Threads III	\$61.90	BD132	Creative Threads IV	\$67.90
BD108	Creative Threads	\$94.90	BD116	Artisano	\$79.90	BD125	Creative Threads III	\$49.90	BD133	Creative Threads V	\$99.90
BD109	Creative Threads	\$49.90	BD117	Artisano	\$89.90	BD126	Creative Threads III	\$73.90	BD134	Creative Threads VI	\$59.90
BD110	Creative Threads	\$103.90	BD118	Creative Threads II	\$49.90	BD127	Creative Threads III	\$67.90	BD135	Creative Threads VII	\$59.90



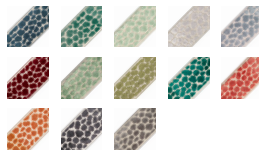
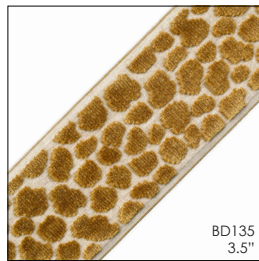
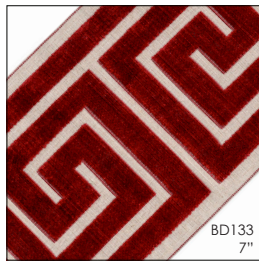
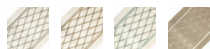
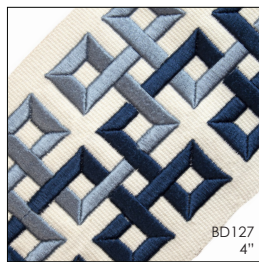
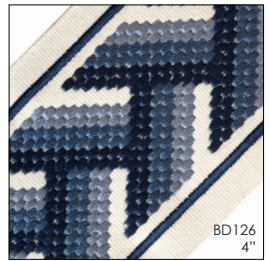
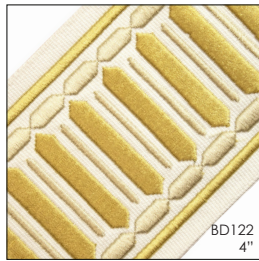
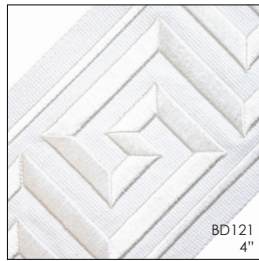
ONLINE ORDERING AVAILABLE AT [HTTPS://RMCOCO.COM/SHOP/PROMO](https://rmcoco.com/shop/promo)

TO ORDER: 800.325.8025 OPTION 1 | FAX: 800.501.6810 | EMAIL: CUSTOMCREATIONS@RMCOCO.COM



CUSTOM PANEL PROGRAM

Suggested Retail Pricing | No Other Discounts Apply | July 2026



ORDER ONLINE!



VIEW OUR ENTIRE TRIM COLLECTION

ONLINE ORDERING AVAILABLE AT [HTTPS://RMCOCO.COM/SHOP/PROMO](https://rmcoco.com/shop/promo)
TO ORDER: 800.325.8025 OPTION 1 | FAX: 800.501.6810 | EMAIL: CUSTOMCREATIONS@RMCOCO.COM



CUSTOM CREATIONS
10 DAY QUICK SHIP
 DRAPERY PROGRAM

Suggested Retail Pricing | No Other Discounts Apply | July 2026

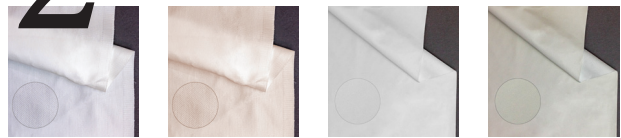
Experience the convenience of our 10-Day Quick Ship program, where designers can access custom-length draperies with swift delivery and a seamless ordering experience. Crafted by skilled artisans in the USA, each drapery promises to be a distinctive highlight in your project. Rest assured, our meticulous 14-point quality inspection ensures precise measurements and impeccable quality before shipping, guaranteeing superior results every time!

1 Choose Your Fabric
 FOUR BEST SELLING FABRICS IN ALL COLORWAYS REPRESENTING 209 SKUS



LANDEN 40 Colors
 SMART MOVE 81 Colors
 SAINT TROPEZ 48 Colors
 MONTE CARLO 40 Colors

2 Choose Your Lining



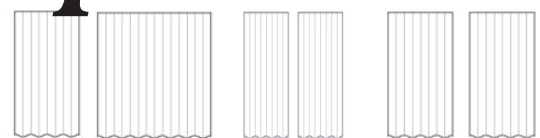
RM DESIGNER SUPER SATEEN White
 RM DESIGNER SUPER SATEEN Ivory
 RM DESIGNER LITE-TECH NON FR BLACKOUT White
 RM DESIGNER LITE-TECH NON FR BLACKOUT Ivory

3 Choose Your Top Style



Three Prong Tacked at Top Pleat
 Three Prong Pleat
 Two Prong Tacked at Top Pleat
 Two Prong Pleat
 Grommet (additional charge)

4 Choose Your Panels



1 Width Panel
 2 Width Panel
 2 Width Pair
 4 Width Pair

Measurements

- Length: **CUSTOM**
- Left Return: 3.5"
- Right Return: 3.5"
- Overlap: 3.5"

Pin Settings

- Wood Pole or Cafe Rings .25"
- Decorative Rods .5"
- Brass Rods .75"
- Valances & Side Panels 1"
- All Under Draperies 1.25"
- Ceiling Mount 1.5"
- Wall-Mounted Traverse Rods 1.75"
- No Pins

Grommets

Available in sizes 1 9/16" & 2"



Program Features

- » Ships within 10 business days
- » Custom length up to 120"
- » Four best-selling fabrics for a total of 209 skus
- » Color matching thread except for pleats
- » Five different top styles to choose from
- » In-house production to ensure quality control

CUSTOM CREATIONS
10 DAY QUICK SHIP
 DRAPERY PROGRAM
SUGGESTED RETAIL PRICING



	Finished Length to 84"			Finished Length to 96"			Finished Length to 108"			Finished Length to 120"		
	2 Width		4 Width Pair	2 Width		4 Width Pair	2 Width		4 Width Pair	2 Width		4 Width Pair
	1 Width Panel	Panel or Pair		1 Width Panel	Panel or Pair		1 Width Panel	Panel or Pair		1 Width Panel	Panel or Pair	
Landen 95% Polyester, 5% Linen Casual Linen Blend Texture	\$336	\$615	\$1,118	\$353	\$647	\$1,177	\$383	\$702	\$1,277	\$418	\$767	\$1,394
Monte Carlo 100% Polyester Cross Hatched Faux Linen	\$289	\$531	\$965	\$303	\$556	\$1,011	\$329	\$604	\$1,098	\$357	\$654	\$1,190
Saint Tropez 100% Polyester Faux Linen Solid	\$301	\$552	\$1,003	\$316	\$579	\$1,052	\$343	\$629	\$1,143	\$372	\$682	\$1,241
Smart Move 100% Polyester Pearlescent Solid Texture	\$324	\$594	\$1,080	\$341	\$625	\$1,136	\$370	\$678	\$1,232	\$403	\$739	\$1,343
Grommet Top (Add to Panel Price)	\$108	\$215	\$430	\$108	\$215	\$430	\$108	\$215	\$430	\$108	\$215	\$430
Blackout Lining (Add to Panel Price)	\$70	\$140	\$281	\$76	\$152	\$304	\$82	\$164	\$328	\$94	\$187	\$374

PLACE YOUR ORDER
 ONLINE OR THROUGH CUSTOM CREATIONS

rmcoco.com/shop/quick-ship
 1.800.325.8025
 customcreations@rmcoco.com

10 Day Quick Ship applies to in stock fabrics and orders with a quantity of 10 or fewer draperies. No cancellations or returns. We will update as soon as possible if unable to meet 10 day deadline for any reason.



SHEER BY THE INCH PROGRAM

Suggested Retail Pricing | No Other Discounts Apply | July 2026



Order Online!

GOSSAMER

27 available colors

\$ 12.83

Per Finished Inch
rod face + overlap and returns

RM DESIGNER ROYAL BATISTE

Champagne, Winter White, White

\$ 8.25

Per Finished Inch
rod face + overlap and returns

RM DESIGNER VALUE VOILE

Champagne, Winter White, White

\$7.83

Per Finished Inch
rod face + overlap and returns

BEADED WEIGHT

(add to per inch price)

\$ 0.56

Per Finished Inch
rod face + overlap and returns

BOTTOM HEADING & ROD POCKET

(add to per inch price)

\$ 0.79

Per Finished Inch

PLEATED



Three Prong
Tacked at Top



Three Prong
Tacked at Bottom

Pleated Standard Features

- 3x's fullness
- Unlined
- Max finished length 99"
- Max finished width for panel is 120" and 240" for pair
- Heading - 4" turned with crinoline
- Bottom Hem - 4" double turned blind stitched
- Side Hem - 1 1/2" double turned blind stitched
- Pin setting up to 1 3/4"
- Matched thread
- Cloth covered weights in hem corners

Pleated Required Ordering Information

- Fabric: Gossamer, RM Designer Royal Batiste or RM Designer Voile
- Fabric Color
- Quantity of Panels or Pair
- Widths per Panel or Pair
- Finished Length
- Pin Setting
- Pleat: Three Prong Tacked at Top or Bottom
- Options: Add Ons

SHIRRED



Shirred

Shirred Standard Features

- 3x's fullness
- 1" Heading (optional) and 1 1/2" Pocket· Unlined
- Max finished length 99"
- Max finished width for panel is 120" and 240" for pair
- Bottom Hem - 4" double turned blind stitched
- Side Hem - 1 1/2" double turned blind stitched
- Matched thread
- Cloth covered weights in hem corners

Shirred Required Ordering Information

- Fabric: Gossamer, RM Designer Royal Batiste or RM Designer Voile
- Fabric Color
- Quantity of Panels or Pairs
- Widths per Panel or Pair
- Finished Length
- Shirred
- Options: Add Ons



Custom Creations
 a division of RM COCO
Fabrics & Trimmings for Living
Style for Life

1389 Southern Expressway
 Cape Girardeau, MO 63703
 800.325.8025 fax 800.501.6810
 customcreations@rmcoco.com

 Order

 Quote

Bill to: _____ Acct #: _____
 Address: _____
 City/State: _____ Zip: _____
 Sidemark: _____ PO#: _____

Ship To: _____
 Address: _____
 Address #2: _____ Zip: _____
 City/State: _____

Date: _____ Phone/Fax: _____

Panel Program Fabric	Color	Lining	Panels or Pairs	Finished Length	Style	Pin Setting (From Drapery Top)	Interlining
		<input type="checkbox"/> White <input type="checkbox"/> Ivory	1 Width Panel Qty. <input type="checkbox"/> 2 Width Panel Qty. <input type="checkbox"/> 3 Width Pair Qty. <input type="checkbox"/> 4 Width Pair Qty. <input type="checkbox"/>	<input type="checkbox"/> Returns & Overlap <input type="checkbox"/> *1 1/2" Pocket <input type="checkbox"/> 1" Header	<input type="checkbox"/> Reverse Pleat <input type="checkbox"/> Tacked at Top <input type="checkbox"/> Shirred* <input type="checkbox"/> Three Prong Pleat <input type="checkbox"/> 2 Prong Pleat <input type="checkbox"/> Soft Goblet	<input type="checkbox"/> .25" <input type="checkbox"/> .50" <input type="checkbox"/> .75" <input type="checkbox"/> 1.0" <input type="checkbox"/> 1.25" <input type="checkbox"/> 1.50" <input type="checkbox"/> 1.75" <input type="checkbox"/> No Pins	<input type="checkbox"/> Yes <input type="checkbox"/> No <input type="checkbox"/> White <input type="checkbox"/> Ivory Blackout Lined <input type="checkbox"/> Yes <input type="checkbox"/> No <input type="checkbox"/> White <input type="checkbox"/> Ivory
Panel Program Fabric	Color	Lining	Panels or Pairs	Finished Length	Style	Pin Setting (From Drapery Top)	Interlining
		<input type="checkbox"/> White <input type="checkbox"/> Ivory	1 Width Panel Qty. <input type="checkbox"/> 2 Width Panel Qty. <input type="checkbox"/> 3 Width Pair Qty. <input type="checkbox"/> 4 Width Pair Qty. <input type="checkbox"/>	<input type="checkbox"/> Returns & Overlap <input type="checkbox"/> *1 1/2" Pocket <input type="checkbox"/> 1" Header	<input type="checkbox"/> Reverse Pleat <input type="checkbox"/> Tacked at Top <input type="checkbox"/> Shirred* <input type="checkbox"/> Three Prong Pleat <input type="checkbox"/> 2 Prong Pleat <input type="checkbox"/> Soft Goblet	<input type="checkbox"/> .25" <input type="checkbox"/> .50" <input type="checkbox"/> .75" <input type="checkbox"/> 1.0" <input type="checkbox"/> 1.25" <input type="checkbox"/> 1.50" <input type="checkbox"/> 1.75" <input type="checkbox"/> No Pins	<input type="checkbox"/> Yes <input type="checkbox"/> No <input type="checkbox"/> White <input type="checkbox"/> Ivory Blackout Lined <input type="checkbox"/> Yes <input type="checkbox"/> No <input type="checkbox"/> White <input type="checkbox"/> Ivory
Grommet Top	Fabric	Lining	Panels or Pairs	Finished Length	Grommet Color	Grommet Size	Interlining
		<input type="checkbox"/> White <input type="checkbox"/> Ivory	1 Width Panel Qty. <input type="checkbox"/> 2 Width Panel Qty. <input type="checkbox"/> 3 Width Pair Qty. <input type="checkbox"/> 4 Width Pair Qty. <input type="checkbox"/>		<input type="checkbox"/> Ant Brass <input type="checkbox"/> Nickel <input type="checkbox"/> Copper <input type="checkbox"/> Black <input type="checkbox"/> Matte Nickel <input type="checkbox"/> Oil Rubbed Bronze <input type="checkbox"/> 1-9/16" only <input type="checkbox"/> Satin Smoke	<input type="checkbox"/> 3/4" <input type="checkbox"/> 1 1/8" <input type="checkbox"/> 1 7/16" <input type="checkbox"/> 1 9/16"	<input type="checkbox"/> Yes <input type="checkbox"/> No <input type="checkbox"/> White <input type="checkbox"/> Ivory Blackout Lined <input type="checkbox"/> Yes <input type="checkbox"/> No <input type="checkbox"/> White <input type="checkbox"/> Ivory
Program	Fabric	Panel/Pair	Width in Inches	Finished Length	Style	Pin Setting (From Drapery Top)	Option
	<input type="checkbox"/> Royal Basitiste <input type="checkbox"/> Value Voile <input type="checkbox"/> Gossamer	<input type="checkbox"/> Pair <input type="checkbox"/> Panel	<input type="checkbox"/> Rod Face <input type="checkbox"/> Returns & Overlaps		<input type="checkbox"/> Three Prong Pleat <input type="checkbox"/> Shirred- <input type="checkbox"/> Pocket Size <input type="checkbox"/> Rod Pocket Top & Bottom- <input type="checkbox"/> Pocket Size Top <input type="checkbox"/> Pocket Size Bottom	<input type="checkbox"/> .25" <input type="checkbox"/> .50" <input type="checkbox"/> .75" <input type="checkbox"/> 1.0" <input type="checkbox"/> 1.25" <input type="checkbox"/> 1.50" <input type="checkbox"/> 1.75" <input type="checkbox"/> No Pins	<input type="checkbox"/> Beaded Weight
Program	Trim & Color	Creative Threads	Trim & Color	Bahama Breeze	Trim & Color	Comments	
	<input type="checkbox"/> BD 111 <input type="checkbox"/> BD 112 <input type="checkbox"/> BD 113 <input type="checkbox"/> BD 114 <input type="checkbox"/> BD 115 <input type="checkbox"/> BD 116 <input type="checkbox"/> BD 117	<input type="checkbox"/> BD 108 <input type="checkbox"/> BD 109 <input type="checkbox"/> BD 110 <input type="checkbox"/> Color	<input type="checkbox"/> BD 108 <input type="checkbox"/> BD 109 <input type="checkbox"/> BD 110 <input type="checkbox"/> Color	Bahama Breeze	<input type="checkbox"/> BD 101 <input type="checkbox"/> BD 102 <input type="checkbox"/> BD 103 <input type="checkbox"/> BD 104 <input type="checkbox"/> Color		



RM COCO DECOR LTD.

1389 Southern Expressway
Cape Girardeau, MO 63703

Phone: 800-325-8025 | 573-334-0517

Fax: 800-501-6810 | 573-334-7483

Email: customerservice@rmcoco.com

www.rmcoco.com