



# PANEL PROGRAM PRICELIST

Effective February 14, 2022

Prices are subject to change without notice.  
Visit <https://rmcoco.com/customer-resources/> for latest pricelists.

# CUSTOM PANEL PROGRAM

Suggested Retail Pricing | No Other Discounts Apply | February 2022

			Finished Length to 90"				Finished Length to 124"				Finished Length to 150"			
			1 Width Panel	2 Width Panel	*3 Width Pair Only	*4 Width Pair Only	1 Width Panel	2 Width Panel	*3 Width Pair Only	*4 Width Pair Only	1 Width Panel	2 Width Panel	*3 Width Pair Only	*4 Width Pair Only
Linen Blends & Textures	<b>Barrister</b>	80% Polyester, 20% Linen Herringbone Solid	\$182	\$364	\$547	\$729	\$240	\$480	\$720	\$960	\$340	\$680	\$1,020	\$1,361
	<b>Bruges</b>	100% Linen Medium Weight Linen	\$267	\$534	\$801	\$1,068	\$335	\$671	\$1,006	\$1,342	\$447	\$894	\$1,341	\$1,789
	<b>Harbor Club</b>	80% Polyester, 20% Linen Slubbed Linen Blend Texture	\$168	\$336	\$503	\$671	\$221	\$442	\$663	\$884	\$317	\$635	\$952	\$1,269
	<b>Harlow</b>	85% Polyester, 15% Linen Casual Linen Blend Texture	\$177	\$355	\$532	\$710	\$234	\$467	\$701	\$935	\$333	\$665	\$998	\$1,330
	<b>Landen</b>	95% Polyester, 5% Linen Casual Linen Blend Texture	\$182	\$364	\$547	\$729	\$240	\$480	\$720	\$960	\$340	\$680	\$1,020	\$1,361
	<b>Monte Carlo</b>	100% Polyester Casual Linen Blend Texture	\$163	\$326	\$489	\$652	\$214	\$429	\$643	\$858	\$310	\$619	\$929	\$1,239
	<b>Saint Tropez</b>	100% Polyester Faux Linen Solid	\$168	\$336	\$503	\$671	\$221	\$442	\$663	\$884	\$317	\$635	\$952	\$1,269
	<b>Smart Move</b>	100% Polyester Pearlescent Solid Texture	\$175	\$350	\$525	\$700	\$230	\$461	\$691	\$922	\$329	\$657	\$986	\$1,315
	<b>Stonebriar</b>	100% Polyester Casual Textured Solid	\$168	\$336	\$503	\$671	\$221	\$442	\$663	\$884	\$317	\$635	\$952	\$1,269
	<b>Strata</b>	76% Viscose, 24% Linen Vertical Strié Texture	\$227	\$453	\$680	\$907	\$299	\$599	\$898	\$1,197	\$405	\$810	\$1,214	\$1,619
	<b>Sutton</b>	100% Polyester Faux Linen Twill	\$168	\$336	\$503	\$671	\$221	\$442	\$663	\$884	\$317	\$635	\$952	\$1,269
Chenilles, Velvets, & Plush Textures	<b>Ascot</b>	90% Polyester, 10% Nylon Pebbled Textured Chenille	\$168	\$336	\$503	\$671	\$221	\$442	\$663	\$884	\$317	\$635	\$952	\$1,269
	<b>Bronco</b>	100% Polyester Multi Colored Textured Chenille	\$158	\$316	\$475	\$633	\$208	\$416	\$624	\$832	\$302	\$604	\$906	\$1,209
	<b>Cortland</b>	85% Polyester, 15% Rayon Cross Hatched Chenille	\$180	\$360	\$539	\$719	\$237	\$474	\$711	\$948	\$336	\$673	\$1,009	\$1,345
	<b>Penthouse</b>	51% Viscose, 29% Polyester Textured Chenille Solid	\$192	\$384	\$575	\$767	\$253	\$506	\$759	\$1,012	\$355	\$711	\$1,066	\$1,421
	<b>Plush</b>	100% Polyester Chenille Textured Solid	\$168	\$336	\$503	\$671	\$221	\$442	\$663	\$884	\$317	\$635	\$952	\$1,269
	<b>Rialto</b>	100% Polyester Strié Faille Chenille	\$168	\$336	\$503	\$671	\$221	\$442	\$663	\$884	\$317	\$635	\$952	\$1,269
	<b>San Moritz</b>	100% Polyester Distressed Chenille Texture	\$204	\$408	\$611	\$815	\$269	\$538	\$807	\$1,076	\$374	\$749	\$1,123	\$1,497
	<b>Villa</b>	100% Polyester Plush Velvet Solid	\$178	\$357	\$535	\$714	\$227	\$453	\$680	\$907	\$326	\$652	\$977	\$1,303
	<b>Wellington</b>	95% Polyester, 5% Nylon Low Pile Chenille Solid	\$168	\$336	\$503	\$671	\$221	\$442	\$663	\$884	\$317	\$635	\$952	\$1,269
	<b>Westover</b>	100% Polyester Antiqued Chenille Solid	\$201	\$403	\$604	\$806	\$266	\$531	\$797	\$1,063	\$371	\$741	\$1,112	\$1,482

# CUSTOM PANEL PROGRAM

Suggested Retail Pricing | No Other Discounts Apply | February 2022

			Finished Length to 90"				Finished Length to 124"				Finished Length to 150"				
			1 Width Panel	2 Width Panel	*3 Width Pair Only	*4 Width Pair Only	1 Width Panel	2 Width Panel	*3 Width Pair Only	*4 Width Pair Only	1 Width Panel	2 Width Panel	*3 Width Pair Only	*4 Width Pair Only	
Classic Drapery Fabric	Organic Classics	Chimera	100% Polyester Faux Silk	\$180	\$360	\$539	\$719	\$237	\$474	\$711	\$948	\$336	\$673	\$1,009	\$1,345
		Contessa	100% Polyester Faux Silk Solid Texture	\$195	\$390	\$586	\$781	\$249	\$498	\$747	\$996	\$352	\$705	\$1,057	\$1,410
		Keepsakes	100% Polyester Transitional Drapery Texture	\$183	\$366	\$550	\$733	\$233	\$466	\$699	\$932	\$333	\$667	\$1,000	\$1,334
		Everest	65% Recycled Polyester 35% Organic Cotton Eco-Twill Solid	\$168	\$336	\$503	\$671	\$221	\$442	\$663	\$884	\$317	\$635	\$952	\$1,269
		Expedition	100% Cotton Organic Cotton Twill	\$168	\$336	\$503	\$671	\$221	\$442	\$663	\$884	\$317	\$635	\$952	\$1,269
		Sailaway	100% Cotton Organic Cotton Duck	\$168	\$336	\$503	\$671	\$221	\$442	\$663	\$884	\$317	\$635	\$952	\$1,269
	Modern Classics	Perception	100% Silk Machine Loomed Silk	\$305	\$609	\$914	\$1,218	\$403	\$807	\$1,210	\$1,613	\$534	\$1,068	\$1,602	\$2,136
		Prelude	100% Polyester Transitional Drapery Texture	\$144	\$288	\$431	\$575	\$189	\$378	\$567	\$756	\$279	\$559	\$838	\$1,117
		RM Dupioni	100% Silk Hand Loomed Silk	\$269	\$537	\$806	\$1,074	\$355	\$711	\$1,066	\$1,421	\$477	\$954	\$1,431	\$1,908
		Trieste Twill	100% Cotton Casual Twill Solid	\$155	\$311	\$466	\$621	\$204	\$408	\$612	\$816	\$292	\$584	\$875	\$1,167
		Vail Suede	100% Polyester Lightweight Suede	\$151	\$302	\$453	\$604	\$198	\$397	\$595	\$794	\$291	\$581	\$872	\$1,163
Light Control Fabrics	Unlined Twilight Dimmers	Eventide	100% Polyester Unlined Dimmer Drapery Textures	\$193	\$386	\$579	\$772	\$255	\$509	\$764	\$1,018	\$357	\$715	\$1,072	\$1,429
		Illusion	100% Polyester Unlined Dimmer Drapery Textures	\$193	\$386	\$579	\$772	\$255	\$509	\$764	\$1,018	\$357	\$715	\$1,072	\$1,429
		Nightfall	100% Polyester Unlined Dimmer Drapery Textures	\$193	\$386	\$579	\$772	\$255	\$509	\$764	\$1,018	\$357	\$715	\$1,072	\$1,429
		Phantom	100% Polyester Unlined Dimmer Drapery Textures	\$193	\$386	\$579	\$772	\$255	\$509	\$764	\$1,018	\$357	\$715	\$1,072	\$1,429
		Stardust	100% Polyester Unlined Dimmer Drapery Textures	\$193	\$386	\$579	\$772	\$255	\$509	\$764	\$1,018	\$357	\$715	\$1,072	\$1,429
		Sunset	100% Polyester Unlined Dimmer Drapery Textures	\$193	\$386	\$579	\$772	\$255	\$509	\$764	\$1,018	\$357	\$715	\$1,072	\$1,429
		Twilight	100% Polyester Unlined Dimmer Drapery Textures	\$157	\$314	\$471	\$628	\$207	\$413	\$620	\$826	\$300	\$601	\$901	\$1,201
		Umbra	100% Polyester Unlined Dimmer Drapery Textures	\$193	\$386	\$579	\$772	\$255	\$509	\$764	\$1,018	\$357	\$715	\$1,072	\$1,429
		Vestige	100% Polyester Unlined Dimmer Drapery Textures	\$193	\$386	\$579	\$772	\$255	\$509	\$764	\$1,018	\$357	\$715	\$1,072	\$1,429
		Lined Twilight Dimmers	Eventide	100% Polyester Lined Dimmer Drapery Textures	\$206	\$412	\$619	\$825	\$272	\$544	\$816	\$1,088	\$378	\$756	\$1,134
	Illusion		100% Polyester Lined Dimmer Drapery Textures	\$206	\$412	\$619	\$825	\$272	\$544	\$816	\$1,088	\$378	\$756	\$1,134	\$1,513
	Nightfall		100% Polyester Lined Dimmer Drapery Textures	\$206	\$412	\$619	\$825	\$272	\$544	\$816	\$1,088	\$378	\$756	\$1,134	\$1,513
	Phantom		100% Polyester Lined Dimmer Drapery Textures	\$206	\$412	\$619	\$825	\$272	\$544	\$816	\$1,088	\$378	\$756	\$1,134	\$1,513
	Stardust		100% Polyester Lined Dimmer Drapery Textures	\$206	\$412	\$619	\$825	\$272	\$544	\$816	\$1,088	\$378	\$756	\$1,134	\$1,513
	Sunset		100% Polyester Lined Dimmer Drapery Textures	\$206	\$412	\$619	\$825	\$272	\$544	\$816	\$1,088	\$378	\$756	\$1,134	\$1,513
	Twilight		100% Polyester Lined Dimmer Drapery Textures	\$170	\$340	\$511	\$681	\$224	\$448	\$672	\$896	\$321	\$642	\$963	\$1,285
Umbra	100% Polyester Lined Dimmer Drapery Textures		\$206	\$412	\$619	\$825	\$272	\$544	\$816	\$1,088	\$378	\$756	\$1,134	\$1,513	
Vestige	100% Polyester Lined Dimmer Drapery Textures	\$206	\$412	\$619	\$825	\$272	\$544	\$816	\$1,088	\$378	\$756	\$1,134	\$1,513		

# CUSTOM PANEL PROGRAM

Suggested Retail Pricing | No Other Discounts Apply | February 2022

Additional Options <i>(add to panel price)</i>	Finished Length to 90"				Finished Length to 124"				Finished Length to 150"			
	1 Width Panel	2 Width Panel	*3 Width Pair Only	*4 Width Pair Only	1 Width Panel	2 Width Panel	*3 Width Pair Only	*4 Width Pair Only	1 Width Panel	2 Width Panel	*3 Width Pair Only	*4 Width Pair Only
<b>Grommet Top</b>	\$89	\$179	\$268	\$357	\$89	\$179	\$268	\$357	\$89	\$179	\$268	\$357
<b>Interlining or Blackout Lining</b>	\$50	\$100	\$150	\$201	\$64	\$129	\$193	\$258	\$70	\$139	\$209	\$278

Trim on Leading Edges <i>(add labor per vertical row and cost of trim to panel price)</i>	Length to:	36"	48"	60"	72"	84"	96"	108"	120"	132"	144"	150"
	Labor per vertical row	\$27	\$41	\$47	\$54	\$68	\$75	\$81	\$95	\$109	\$122	\$129
	Yardage required	1.25	1.50	1.75	2.25	2.50	2.75	3.25	3.50	3.75	4.25	4.50

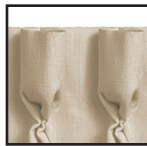
RM COCO trim selections only. Trim top stitched on vertical edge only, no horizontal application or inserted trim.

Trim Options <i>(add labor per vertical row and cost of trim to panel price)</i>	Pattern	Collection	Retail/Yard	Pattern	Collection	Retail/Yard
	BD111	Artisano	\$69.90	BD108	Creative Threads	\$94.90
	BD112	Artisano	\$69.90	BD109	Creative Threads	\$49.90
	BD113	Artisano	\$79.90	BD110	Creative Threads	\$94.90
	BD114	Artisano	\$79.90	BD100	Bahama Breeze	\$50.90
	BD115	Artisano	\$69.90	BD101	Bahama Breeze	\$43.90
	BD116	Artisano	\$79.90	BD102	Bahama Breeze	\$41.90
	BD117	Artisano	\$89.90	BD103	Bahama Breeze	\$25.90
				BD104	Bahama Breeze	\$45.90

## Five Pleat Styles Available 2 1/2 x's Fullness



Reverse Pleat



Soft Goblet



Tacked at Top



Three Prong Pleat



Two Prong Pleat\*\*



Shirred  
1" heading & 1 1/2" pocket

## Pleated or Shirred Features

- 5 pleats per width
- Lined with RM Sateen white or ivory
- Bottom Hem-4" double turned blind stitched
- Side Hem-1 1/2" double turned blind stitched
- Matched thread
- Pin setting up to 1 3/4"
- Cloth covered weights in hem corners
- 1 width pleats to approximately 20"
- \*\* 2 Prong Pleats have 1 width pleats to approximately 24 inches and has 6 pleats per width

no other discounts apply



## Grommet Top Standard Features

- 8 grommets per width
- Lined with RM Sateen white or ivory
- Heading-4" turned with crinoline
- Bottom Hem-4" double turned blind stitched
- Side Hem-1 1/2" double turned blind stitched
- Matched thread
- Cloth covered weights in hem corners

no other discounts apply

## Pleated or Shirred Ordering Information Required

- Fabric
- Fabric Color
- RM Designer Super Sateen/ white or ivory
- Quantity of Panels or Pairs
- Widths per Panel or Pair
- Finished Length
- Pin Setting
- Pleat Style
- Interlined or Blackout Lined: Add on

## Grommet Top Ordering Information Required

- Fabric
- Fabric Color
- Royal Sateen: White or Ivory
- Quantity of Panels or Pairs
- Widths per Panel or Pair
- Finished Length (from top of panel)
- Grommet Size
- Grommet Color
- Interlined or Blackout Lined: Add on

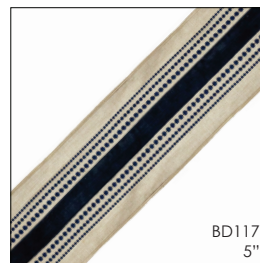
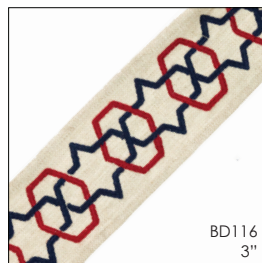
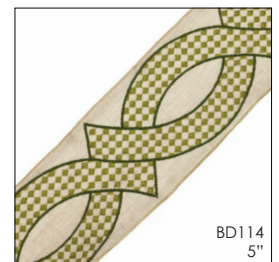
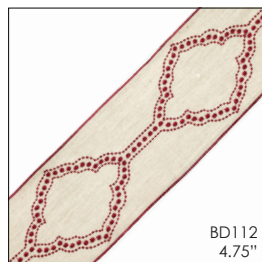
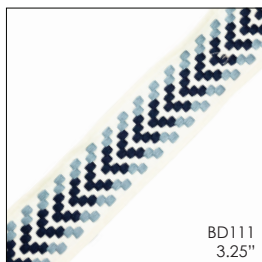
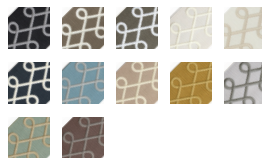
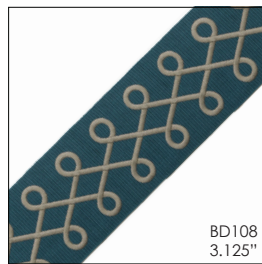
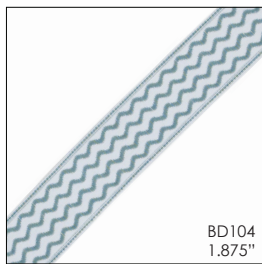
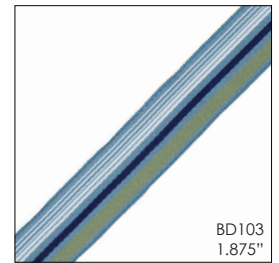
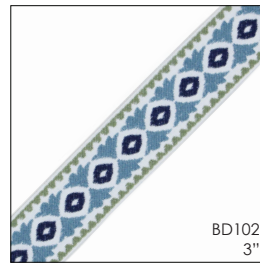
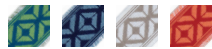
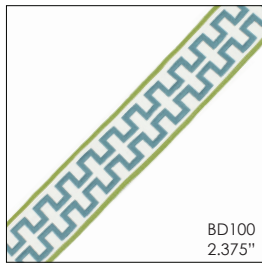
## Grommet Sizes

- Inside diameter of opening
- 3/4"
- 1 1/8"
- 1 7/16"
- 1 9/16"

## Grommet Colors

- Antique Brass
- Antique Copper
- Brass
- Black
- Matte Nickel
- Nickel
- Oil Rubbed Bronze - 1 9/16" only
- Satin Smoke

# ELIGIBLE PANEL PROGRAM TRIM



VIEW OUR ENTIRE  
TRIM COLLECTION