



PANEL PROGRAM PRICELIST

Effective March 20, 2023

Prices are subject to change without notice.
Visit <https://rmcoco.com/customer-resources/> for latest pricelists.



CUSTOM PANEL PROGRAM

Suggested Retail Pricing | No Other Discounts Apply | March 2023

			Finished Length to 90"				Finished Length to 124"				Finished Length to 150"			
			1 Width Panel	2 Width Panel	*3 Width Pair Only	*4 Width Pair Only	1 Width Panel	2 Width Panel	*3 Width Pair Only	*4 Width Pair Only	1 Width Panel	2 Width Panel	*3 Width Pair Only	*4 Width Pair Only
Linen Blends & Textures	Barrister	80% Polyester, 20% Linen Herringbone Solid	\$188	\$376	\$564	\$752	\$247	\$495	\$742	\$990	\$353	\$707	\$1,060	\$1,413
	Bruges	100% Linen Medium Weight Linen	\$273	\$546	\$820	\$1,093	\$343	\$687	\$1,030	\$1,373	\$460	\$921	\$1,381	\$1,842
	Harbor Club	80% Polyester, 20% Linen Slubbed Linen Blend Texture	\$174	\$347	\$521	\$694	\$228	\$457	\$685	\$913	\$331	\$661	\$992	\$1,322
	Landen	95% Polyester, 5% Linen Casual Linen Blend Texture	\$200	\$400	\$600	\$800	\$263	\$527	\$790	\$1,054	\$372	\$745	\$1,117	\$1,489
	Monte Carlo	100% Polyester Casual Linen Blend Texture	\$169	\$337	\$506	\$675	\$222	\$444	\$666	\$888	\$323	\$646	\$969	\$1,292
	Saint Tropez	100% Polyester Faux Linen Solid	\$174	\$347	\$521	\$694	\$228	\$457	\$685	\$913	\$331	\$661	\$992	\$1,322
	Smart Move	100% Polyester Pearlescent Solid Texture	\$181	\$361	\$542	\$723	\$238	\$476	\$714	\$952	\$342	\$684	\$1,026	\$1,368
	Stonebriar	100% Polyester Casual Textured Solid	\$174	\$347	\$521	\$694	\$228	\$457	\$685	\$913	\$331	\$661	\$992	\$1,322
	Strata	76% Viscose, 24% Linen Vertical Strié Texture	\$251	\$501	\$752	\$1,003	\$331	\$662	\$993	\$1,324	\$446	\$893	\$1,339	\$1,785
	Sutton	100% Polyester Faux Linen Twill	\$174	\$347	\$521	\$694	\$228	\$457	\$685	\$913	\$331	\$661	\$992	\$1,322
Chenilles, Velvets, & Plush Textures	Ascot	90% Polyester, 10% Nylon Pebbled Textured Chenille	\$174	\$347	\$521	\$694	\$228	\$457	\$685	\$913	\$331	\$661	\$992	\$1,322
	Bronco	100% Polyester Multi Colored Textured Chenille	\$164	\$328	\$492	\$656	\$215	\$431	\$646	\$862	\$315	\$631	\$946	\$1,261
	Cortland	85% Polyester, 15% Rayon Cross Hatched Chenille	\$186	\$371	\$557	\$742	\$244	\$489	\$733	\$977	\$350	\$699	\$1,049	\$1,389
	Penthouse	51% Viscose, 29% Polyester Textured Chenille Solid	\$198	\$395	\$593	\$790	\$260	\$521	\$781	\$1,041	\$369	\$737	\$1,106	\$1,474
	Plush	100% Polyester Chenille Textured Solid	\$174	\$347	\$521	\$694	\$228	\$457	\$685	\$913	\$331	\$661	\$992	\$1,322
	Rialto	100% Polyester Strié Faille Chenille	\$174	\$347	\$521	\$694	\$228	\$457	\$685	\$913	\$331	\$661	\$992	\$1,322
	San Moritz	100% Polyester Distressed Chenille Texture	\$210	\$419	\$629	\$838	\$276	\$553	\$829	\$1,105	\$388	\$775	\$1,163	\$1,550
	Villa	100% Polyester Plush Velvet Solid	\$187	\$373	\$560	\$746	\$237	\$475	\$712	\$949	\$343	\$686	\$1,028	\$1,371
	Wellington	95% Polyester, 5% Nylon Low Pile Chenille Solid	\$174	\$347	\$521	\$694	\$228	\$457	\$685	\$913	\$331	\$661	\$992	\$1,322
	Westover	100% Polyester Antiqued Chenille Solid	\$207	\$414	\$621	\$828	\$273	\$546	\$819	\$1,092	\$384	\$767	\$1,151	\$1,535



CUSTOM PANEL PROGRAM

Suggested Retail Pricing | No Other Discounts Apply | March 2023

			Finished Length to 90"				Finished Length to 124"				Finished Length to 150"				
			1 Width Panel	2 Width Panel	*3 Width Pair Only	*4 Width Pair Only	1 Width Panel	2 Width Panel	*3 Width Pair Only	*4 Width Pair Only	1 Width Panel	2 Width Panel	*3 Width Pair Only	*4 Width Pair Only	
Classic Drapery Fabric	Chimera	100% Polyester Faux Silk	\$186	\$371	\$557	\$742	\$244	\$489	\$733	\$977	\$350	\$699	\$1,049	\$1,398	
	Contessa	100% Polyester Faux Silk Solid Texture	\$201	\$402	\$603	\$804	\$256	\$513	\$769	\$1,026	\$366	\$731	\$1,097	\$1,462	
	Everest	65% Recycled Polyester 35% Organic Cotton Eco-Twill Solid	\$181	\$361	\$542	\$723	\$238	\$476	\$714	\$952	\$342	\$684	\$1,026	\$1,368	
	Expedition	100% Cotton Organic Cotton Twill	\$181	\$361	\$542	\$723	\$238	\$476	\$714	\$952	\$342	\$684	\$1,026	\$1,368	
	Keepsakes	100% Polyester Transitional Drapery Texture	\$199	\$397	\$596	\$794	\$253	\$507	\$760	\$1,013	\$362	\$724	\$1,085	\$1,447	
	Perception	100% Silk Machine Loomed Silk	\$327	\$654	\$981	\$1,308	\$433	\$866	\$1,299	\$1,732	\$574	\$1,147	\$1,721	\$2,295	
	Prelude	100% Polyester Transitional Drapery Texture	\$152	\$304	\$456	\$608	\$199	\$399	\$598	\$798	\$296	\$593	\$889	\$1,185	
	RM Dupioni	100% Silk Hand Loomed Silk	\$274	\$549	\$823	\$1,097	\$363	\$725	\$1,088	\$1,451	\$490	\$980	\$1,470	\$1,960	
	Sailaway	100% Cotton Organic Cotton Duck	\$190	\$381	\$571	\$761	\$251	\$501	\$752	\$1,003	\$357	\$714	\$1,071	\$1,428	
	Trieste Twill	100% Cotton Casual Twill Solid	\$200	\$399	\$599	\$799	\$263	\$526	\$789	\$1,052	\$366	\$731	\$1,097	\$1,462	
	Vail Suede	100% Polyester Lightweight Suede	\$157	\$313	\$470	\$627	\$206	\$412	\$618	\$824	\$304	\$608	\$912	\$1,216	
Light Control Fabrics	Unlined Twilight Dimmers	Eventide	100% Polyester Unlined Dimmer Drapery Textures	\$207	\$415	\$622	\$829	\$273	\$547	\$820	\$1,094	\$384	\$768	\$1,152	\$1,536
		Illusion	100% Polyester Unlined Dimmer Drapery Textures	\$207	\$415	\$622	\$829	\$273	\$547	\$820	\$1,094	\$384	\$768	\$1,152	\$1,536
		Nightfall	100% Polyester Unlined Dimmer Drapery Textures	\$207	\$415	\$622	\$829	\$273	\$547	\$820	\$1,094	\$384	\$768	\$1,152	\$1,536
		Phantom	100% Polyester Unlined Dimmer Drapery Textures	\$231	\$463	\$694	\$925	\$305	\$611	\$916	\$1,222	\$422	\$844	\$1,266	\$1,688
		Stardust	100% Polyester Unlined Dimmer Drapery Textures	\$207	\$415	\$622	\$829	\$273	\$547	\$820	\$1,094	\$384	\$768	\$1,152	\$1,536
		Sunset	100% Polyester Unlined Dimmer Drapery Textures	\$207	\$415	\$622	\$829	\$273	\$547	\$820	\$1,094	\$384	\$768	\$1,152	\$1,536
		Twilight	100% Polyester Unlined Dimmer Drapery Textures	\$195	\$391	\$586	\$781	\$257	\$515	\$772	\$1,030	\$365	\$730	\$1,095	\$1,460
		Umbra	100% Polyester Unlined Dimmer Drapery Textures	\$207	\$415	\$622	\$829	\$273	\$547	\$820	\$1,094	\$384	\$768	\$1,152	\$1,536
		Vestige	100% Polyester Unlined Dimmer Drapery Textures	\$212	\$424	\$636	\$849	\$280	\$560	\$839	\$1,119	\$392	\$783	\$1,175	\$1,567
	Lined Twilight Dimmers	Eventide	100% Polyester Lined Dimmer Drapery Textures	\$222	\$443	\$665	\$886	\$292	\$585	\$877	\$1,169	\$407	\$813	\$1,220	\$1,626
		Illusion	100% Polyester Lined Dimmer Drapery Textures	\$222	\$443	\$665	\$886	\$292	\$585	\$877	\$1,169	\$407	\$813	\$1,220	\$1,626
		Nightfall	100% Polyester Lined Dimmer Drapery Textures	\$222	\$443	\$665	\$886	\$292	\$585	\$877	\$1,169	\$407	\$813	\$1,220	\$1,626
		Phantom	100% Polyester Lined Dimmer Drapery Textures	\$246	\$491	\$737	\$982	\$324	\$649	\$973	\$1,297	\$445	\$889	\$1,334	\$1,778
		Stardust	100% Polyester Lined Dimmer Drapery Textures	\$222	\$443	\$665	\$886	\$292	\$585	\$877	\$1,169	\$407	\$813	\$1,220	\$1,626
		Sunset	100% Polyester Lined Dimmer Drapery Textures	\$222	\$443	\$665	\$886	\$292	\$585	\$877	\$1,169	\$407	\$813	\$1,220	\$1,626
Twilight	100% Polyester Lined Dimmer Drapery Textures	\$210	\$419	\$629	\$838	\$276	\$553	\$829	\$1,105	\$388	\$775	\$1,163	\$1,550		
Umbra	100% Polyester Lined Dimmer Drapery Textures	\$222	\$443	\$665	\$886	\$292	\$585	\$877	\$1,169	\$407	\$813	\$1,220	\$1,626		
Vestige	100% Polyester Lined Dimmer Drapery Textures	\$226	\$453	\$679	\$905	\$299	\$597	\$896	\$1,195	\$414	\$828	\$1,242	\$1,656		

CUSTOM PANEL PROGRAM

Suggested Retail Pricing | No Other Discounts Apply | March 2023

Additional Options (add to panel price)	Finished Length to 90"				Finished Length to 124"				Finished Length to 150"			
	1 Width Panel	2 Width Panel	*3 Width Pair Only	*4 Width Pair Only	1 Width Panel	2 Width Panel	*3 Width Pair Only	*4 Width Pair Only	1 Width Panel	2 Width Panel	*3 Width Pair Only	*4 Width Pair Only
Grommet Top	\$96	\$193	\$289	\$386	\$96	\$193	\$289	\$386	\$96	\$193	\$289	\$386
Interlining or Blackout Lining	\$65	\$129	\$194	\$258	\$83	\$167	\$250	\$334	\$91	\$183	\$274	\$366

Trim on Leading Edges (add labor per vertical row and cost of trim to panel price)	Length to:	36"	48"	60"	72"	84"	96"	108"	120"	132"	144"	150"
	Labor per vertical row	\$27	\$41	\$47	\$54	\$68	\$75	\$81	\$95	\$109	\$122	\$129
	Yardage required	1.25	1.50	1.75	2.25	2.50	2.75	3.25	3.50	3.75	4.25	4.50

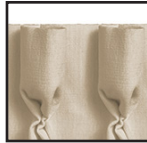
RM COCO trim selections only. Trim top stitched on vertical edge only, no horizontal application or inserted trim.

Trim Options (add labor per vertical row and cost of trim to panel price)	Pattern	Collection	Retail/Yard	Pattern	Collection	Retail/Yard
	BD111	Artisano	\$69.90	BD118	Creative Threads II	\$59.90
	BD112	Artisano	\$69.90	BD119	Creative Threads II	\$74.90
	BD113	Artisano	\$79.90	BD120	Creative Threads II	\$78.90
	BD114	Artisano	\$79.90	BD121	Creative Threads II	\$78.90
	BD115	Artisano	\$69.90	BD122	Creative Threads III	\$74.90
	BD116	Artisano	\$79.90	BD123	Creative Threads III	\$67.90
	BD117	Artisano	\$89.90	BD125	Creative Threads III	\$59.90
	BD100	Bahama Breeze	\$54.90	BD126	Creative Threads III	\$80.90
	BD101	Bahama Breeze	\$46.90	BD127	Creative Threads III	\$74.90
	BD102	Bahama Breeze	\$44.90	BD128	Creative Threads IV	\$87.90
	BD103	Bahama Breeze	\$26.90	BD129	Creative Threads IV	\$59.90
	BD104	Bahama Breeze	\$48.90	BD130	Creative Threads IV	\$59.90
	BD108	Creative Threads	\$94.90	BD131	Creative Threads IV	\$74.90
	BD109	Creative Threads	\$49.90	BD132	Creative Threads IV	\$74.90
	BD110	Creative Threads	\$94.90			

Five Pleat Styles Available 2 1/2 x's Fullness



Reverse Pleat



Soft Goblet



Tacked at Top



Three Prong Pleat



Two Prong Pleat**



Shirred
1" heading & 1 1/2" pocket

Pleated or Shirred Features

- 5 pleats per width
- Lined with RM Designer Super Sateen - white or ivory
- Bottom Hem-4" double turned blind stitched
- Side Hem-1 1/2" double turned blind stitched
- Matched thread
- Pin setting up to 1 3/4"
- Cloth covered weights in hem corners
- 1 width pleats to approximately 20"
- ** 2 Prong Pleats have 1 width pleats to approximately 24 inches and has 6 pleats per width

no other discounts apply



Grommet Top Standard Features

- 8 grommets per width
- Lined with RM Designer Super Sateen - white or ivory
- Heading-4" turned with crinoline
- Bottom Hem-4" double turned blind stitched
- Side Hem-1 1/2" double turned blind stitched
- Matched thread
- Cloth covered weights in hem corners

no other discounts apply

Pleated or Shirred Ordering Information Required

- Fabric
- Fabric Color
- RM Designer Super Sateen - white or ivory
- Quantity of Panels or Pairs
- Widths per Panel or Pair
- Finished Length
- Pin Setting
- Pleat Style
- Interlined or Blackout Lined: Add on

Grommet Top Ordering Information Required

- Fabric
- Fabric Color
- RM Designer Super Sateen - white or ivory
- Quantity of Panels or Pairs
- Widths per Panel or Pair
- Finished Length (from top of panel)
- Grommet Size
- Grommet Color
- Interlined or Blackout Lined: Add on

Grommet Sizes

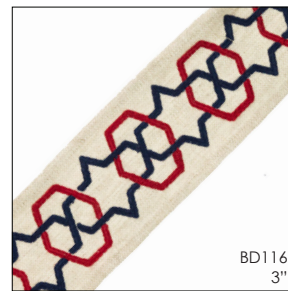
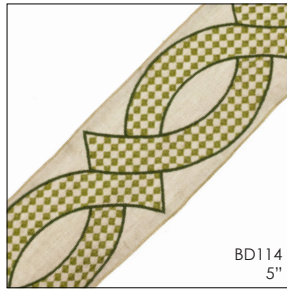
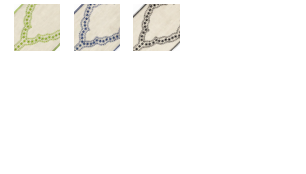
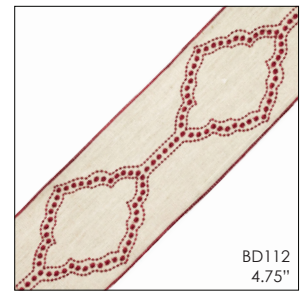
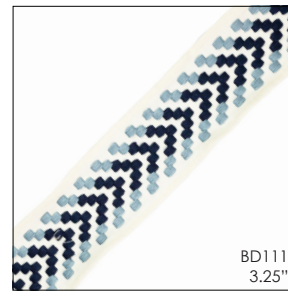
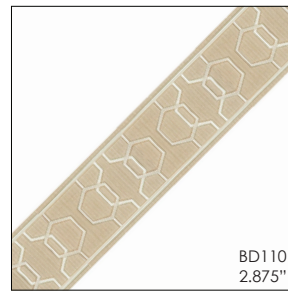
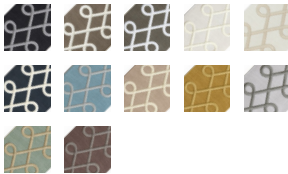
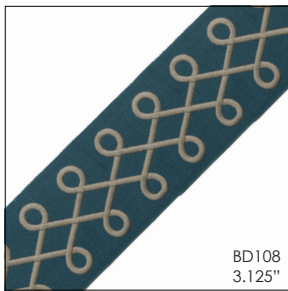
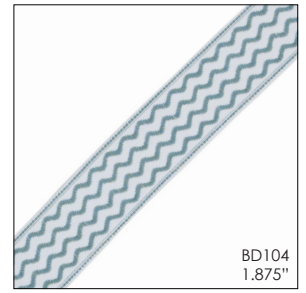
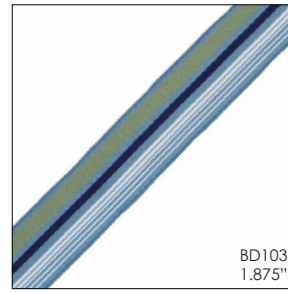
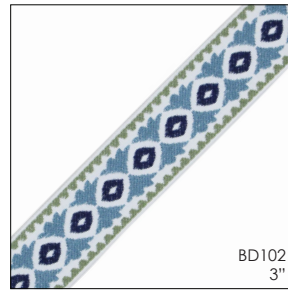
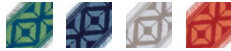
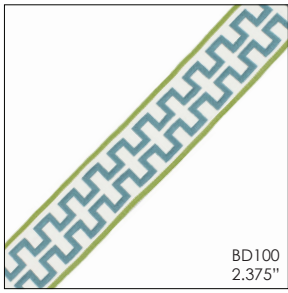
- Inside diameter of opening
- 3/4"
- 1 1/8"
- 1 7/16"
- 1 9/16"

Grommet Colors

- Antique Brass
- Antique Copper
- Brass
- Black
- Matte Nickel
- Nickel
- Oil Rubbed Bronze - 1 9/16" only
- Satin Smoke

ELIGIBLE PANEL PROGRAM TRIM

Suggested Retail Pricing | No Other Discounts Apply | March 2023



TO ORDER:

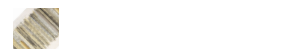
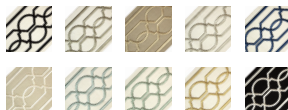
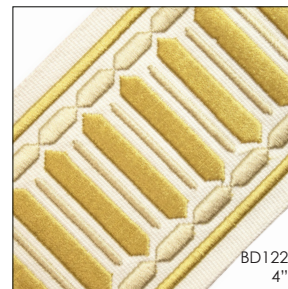
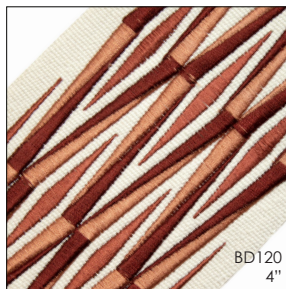
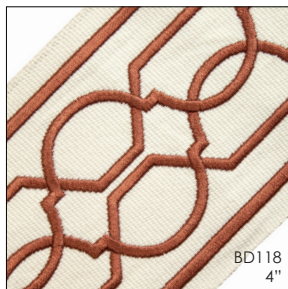
AVAILABLE ONLINE AT RMCOCO.COM

800.325.8025 OPTION 1 | FAX: 800.501.6810 | EMAIL: CUSTOMCREATIONS@RMCOCO.COM

12/07/23

ELIGIBLE PANEL PROGRAM TRIM

Suggested Retail Pricing | No Other Discounts Apply | March 2023



VIEW OUR ENTIRE
TRIM COLLECTION

TO ORDER:

AVAILABLE ONLINE AT [RMCO.COM](https://www.rmco.com)

800.325.8025 OPTION 1 | FAX: 800.501.6810 | EMAIL: [CUSTOMCREATIONS@RMCO.COM](mailto:customcreations@rmcoco.com)

12/07/23