



PANEL PROGRAM PRICELIST

Effective March 29, 2025

Prices are subject to change without notice.
Visit <https://rmcoco.com/customer-resources/> for latest pricelists.

Panel Program

Pleated or Shirred Lined Panels
Grommet Top (See Surcharge)

suggested retail pricing • no other discounts apply

Effective March 29th, 2025

Linen Blends & Textures		Finished Length to 90"				Finished Length to 124"				Finished Length to 150"			
		1 Width Panel	2 Width Panel	2 Width Pair Only	4 Width Pair Only*	1 Width Panel	2 Width Panel	2 Width Pair Only	4 Width Pair Only*	1 Width Panel	2 Width Panel	2 Width Pair Only	4 Width Pair Only*
Barrister	80% Polyester, 20% Linen Herringbone Solid	\$ 220	\$ 439	\$ 439	\$ 879	\$ 289	\$ 578	\$ 578	\$ 1,157	\$ 415	\$ 830	\$ 830	\$ 1,661
Bruges	100% Linen Medium Weight Linen	\$ 280	\$ 559	\$ 559	\$ 1,118	\$ 369	\$ 737	\$ 737	\$ 1,474	\$ 495	\$ 989	\$ 989	\$ 1,979
Harbor Club	80% Polyester, 20% Linen Slubbed Linen Blend Texture	\$ 200	\$ 401	\$ 401	\$ 802	\$ 264	\$ 527	\$ 527	\$ 1,054	\$ 385	\$ 770	\$ 770	\$ 1,539
Landen	95% Polyester, 5% Linen Casual Linen Blend Texture	\$ 241	\$ 483	\$ 483	\$ 965	\$ 318	\$ 636	\$ 636	\$ 1,272	\$ 449	\$ 899	\$ 899	\$ 1,797
Monte Carlo	100% Polyester Casual Linen Blend Texture	\$ 200	\$ 401	\$ 401	\$ 802	\$ 264	\$ 527	\$ 527	\$ 1,054	\$ 385	\$ 770	\$ 770	\$ 1,539
Saint Tropez	100% Polyester Faux Linen Solid	\$ 217	\$ 435	\$ 435	\$ 869	\$ 286	\$ 572	\$ 572	\$ 1,144	\$ 411	\$ 823	\$ 823	\$ 1,645
Smart Move	100% Polyester Pearlescent Solid Texture	\$ 220	\$ 439	\$ 439	\$ 879	\$ 289	\$ 578	\$ 578	\$ 1,157	\$ 415	\$ 830	\$ 830	\$ 1,661
Strata	76% Viscose, 24% Linen Vertical Strié Texture	\$ 274	\$ 548	\$ 548	\$ 1,097	\$ 362	\$ 723	\$ 723	\$ 1,447	\$ 494	\$ 988	\$ 988	\$ 1,976
Sutton	100% Polyester Faux Linen Twill	\$ 229	\$ 459	\$ 459	\$ 917	\$ 302	\$ 604	\$ 604	\$ 1,208	\$ 430	\$ 861	\$ 861	\$ 1,721

* 4 widths not available as panels

Velvets		Finished Length to 90"				Finished Length to 124"				Finished Length to 150"			
		1 Width Panel	2 Width Panel	2 Width Pair Only	4 Width Pair Only*	1 Width Panel	2 Width Panel	2 Width Pair Only	4 Width Pair Only*	1 Width Panel	2 Width Panel	2 Width Pair Only	4 Width Pair Only*
Villa	100% Polyester Plush Velvet Solid	\$ 286	\$ 572	\$ 572	\$ 1,143	\$ 357	\$ 714	\$ 714	\$ 1,427	\$ 476	\$ 952	\$ 952	\$ 1,905

* 4 widths not available as panels

Classic Drapery Fabrics		Finished Length to 90"				Finished Length to 124"				Finished Length to 150"			
		1 Width Panel	2 Width Panel	2 Width Pair Only	4 Width Pair Only*	1 Width Panel	2 Width Panel	2 Width Pair Only	4 Width Pair Only*	1 Width Panel	2 Width Panel	2 Width Pair Only	4 Width Pair Only*
Contessa	100% Polyester Faux Silk Solid Texture	\$ 220	\$ 440	\$ 440	\$ 880	\$ 289	\$ 579	\$ 579	\$ 1,157	\$ 401	\$ 801	\$ 801	\$ 1,603
Keepsakes	100% Polyester Transitional Drapery Texture	\$ 239	\$ 478	\$ 478	\$ 956	\$ 315	\$ 629	\$ 629	\$ 1,258	\$ 431	\$ 861	\$ 861	\$ 1,722
Prelude	100% Polyester Transitional Drapery Texture	\$ 204	\$ 408	\$ 408	\$ 816	\$ 268	\$ 535	\$ 535	\$ 1,071	\$ 375	\$ 750	\$ 750	\$ 1,500

* 4 widths not available as panels

Light Control Fabrics		Finished Length to 90"				Finished Length to 124"				Finished Length to 150"			
		1 Width Panel	2 Width Panel	2 Width Pair Only	4 Width Pair Only*	1 Width Panel	2 Width Panel	2 Width Pair Only	4 Width Pair Only*	1 Width Panel	2 Width Panel	2 Width Pair Only	4 Width Pair Only*
Eventide	100% Polyester Unlined Dimmer Drapery Textures	\$ 299	\$ 599	\$ 599	\$ 1,198	\$ 395	\$ 790	\$ 790	\$ 1,580	\$ 526	\$ 1,053	\$ 1,053	\$ 2,105
Illusion	100% Polyester Unlined Dimmer Drapery Textures	\$ 313	\$ 626	\$ 626	\$ 1,252	\$ 413	\$ 826	\$ 826	\$ 1,652	\$ 548	\$ 1,095	\$ 1,095	\$ 2,191
Nightfall	100% Polyester Unlined Dimmer Drapery Textures	\$ 321	\$ 642	\$ 642	\$ 1,284	\$ 424	\$ 848	\$ 848	\$ 1,696	\$ 560	\$ 1,121	\$ 1,121	\$ 2,242
Phantom	100% Polyester Unlined Dimmer Drapery Textures	\$ 308	\$ 615	\$ 615	\$ 1,230	\$ 406	\$ 812	\$ 812	\$ 1,624	\$ 539	\$ 1,078	\$ 1,078	\$ 2,156
Stardust	100% Polyester Unlined Dimmer Drapery Textures	\$ 278	\$ 556	\$ 556	\$ 1,111	\$ 366	\$ 733	\$ 733	\$ 1,465	\$ 492	\$ 984	\$ 984	\$ 1,968
Sunset	100% Polyester Unlined Dimmer Drapery Textures	\$ 278	\$ 556	\$ 556	\$ 1,111	\$ 366	\$ 733	\$ 733	\$ 1,465	\$ 492	\$ 984	\$ 984	\$ 1,968
Twilight	100% Polyester Unlined Dimmer Drapery Textures	\$ 259	\$ 518	\$ 518	\$ 1,036	\$ 341	\$ 682	\$ 682	\$ 1,364	\$ 462	\$ 924	\$ 924	\$ 1,849
Umbr	100% Polyester Unlined Dimmer Drapery Textures	\$ 313	\$ 626	\$ 626	\$ 1,252	\$ 413	\$ 826	\$ 826	\$ 1,652	\$ 548	\$ 1,095	\$ 1,095	\$ 2,191
Vestige	100% Polyester Unlined Dimmer Drapery Textures	\$ 297	\$ 593	\$ 593	\$ 1,187	\$ 391	\$ 783	\$ 783	\$ 1,566	\$ 522	\$ 1,044	\$ 1,044	\$ 2,088
Eventide	100% Polyester Lined Dimmer Drapery Textures	\$ 323	\$ 645	\$ 645	\$ 1,291	\$ 426	\$ 852	\$ 852	\$ 1,704	\$ 563	\$ 1,126	\$ 1,126	\$ 2,253
Illusion	100% Polyester Lined Dimmer Drapery Textures	\$ 336	\$ 672	\$ 672	\$ 1,345	\$ 444	\$ 888	\$ 888	\$ 1,776	\$ 585	\$ 1,169	\$ 1,169	\$ 2,338
Nightfall	100% Polyester Lined Dimmer Drapery Textures	\$ 344	\$ 689	\$ 689	\$ 1,377	\$ 455	\$ 910	\$ 910	\$ 1,820	\$ 597	\$ 1,195	\$ 1,195	\$ 2,389
Phantom	100% Polyester Lined Dimmer Drapery Textures	\$ 331	\$ 662	\$ 662	\$ 1,323	\$ 437	\$ 874	\$ 874	\$ 1,748	\$ 576	\$ 1,152	\$ 1,152	\$ 2,304
Stardust	100% Polyester Lined Dimmer Drapery Textures	\$ 301	\$ 602	\$ 602	\$ 1,204	\$ 397	\$ 795	\$ 795	\$ 1,589	\$ 529	\$ 1,058	\$ 1,058	\$ 2,116
Sunset	100% Polyester Lined Dimmer Drapery Textures	\$ 301	\$ 602	\$ 602	\$ 1,204	\$ 397	\$ 795	\$ 795	\$ 1,589	\$ 529	\$ 1,058	\$ 1,058	\$ 2,116
Twilight	100% Polyester Lined Dimmer Drapery Textures	\$ 282	\$ 564	\$ 564	\$ 1,129	\$ 372	\$ 744	\$ 744	\$ 1,488	\$ 499	\$ 998	\$ 998	\$ 1,996
Umbr	100% Polyester Lined Dimmer Drapery Textures	\$ 336	\$ 672	\$ 672	\$ 1,345	\$ 444	\$ 888	\$ 888	\$ 1,776	\$ 585	\$ 1,169	\$ 1,169	\$ 2,338
Vestige	100% Polyester Lined Dimmer Drapery Textures	\$ 320	\$ 640	\$ 640	\$ 1,280	\$ 423	\$ 845	\$ 845	\$ 1,690	\$ 559	\$ 1,118	\$ 1,118	\$ 2,235

Grommet Top (Add to Panel Price)		Finished Length to 90"				Finished Length to 124"				Finished Length to 150"			
		1 Width Panel	2 Width Panel	2 Width Pair Only	4 Width Pair Only*	1 Width Panel	2 Width Panel	2 Width Pair Only	4 Width Pair Only*	1 Width Panel	2 Width Panel	2 Width Pair Only	4 Width Pair Only*
		\$ 104	\$ 208	\$ 208	\$ 416	\$ 104	\$ 208	\$ 208	\$ 416	\$ 104	\$ 208	\$ 208	\$ 416

Panel Program

Pleated or Shirred Lined Panels
 Grommet Top (See Surcharge)

suggested retail pricing • no other discounts apply

Effective March 29th, 2025

Trim on Leading Edges (Add Labor per Vertical Row and Cost of Trim to Panel Price)	Length to	36"	48"	60"	72"	84"	96"	108"	120"	132"	144"	150"
	Labor per Vertical Row	\$ 34.00	\$ 51.00	\$ 60.00	\$ 68.00	\$ 85.00	\$ 95.00	\$ 103.00	\$ 120.00	\$ 138.00	\$ 156.00	\$ 166.00
	Ydg Required	1.25	1.50	1.75	2.25	2.50	2.75	3.25	3.50	3.75	4.25	4.50

RM CO CO trim selections only. Trim top stitched on vertical edge only, no horizontal application or inserted trim.

Trim Options (Add Labor per Vertical Row and Cost of Trim to Panel Price)	Pattern	Collection	Retail Per Yard	Pattern	Collection	Retail Per Yard
	BD100	Bahama Breeze	\$ 58.90	BD119	Creative Threads II	\$ 74.90
BD101	Bahama Breeze	\$ 50.90	BD120	Creative Threads II	\$ 78.90	
BD102	Bahama Breeze	\$ 48.90	BD121	Creative Threads II	\$ 78.90	
BD103	Bahama Breeze	\$ 28.90	BD122	Creative Threads III	\$ 74.90	
BD104	Bahama Breeze	\$ 53.90	BD123	Creative Threads III	\$ 67.90	
BD108	Creative Threads	\$ 94.90	BD125	Creative Threads III	\$ 59.90	
BD109	Creative Threads	\$ 49.90	BD126	Creative Threads III	\$ 80.90	
BD110	Creative Threads	\$ 94.90	BD127	Creative Threads III	\$ 74.90	
BD111	Artisano	\$ 69.90	BD128	Creative Threads IV	\$ 87.90	
BD112	Artisano	\$ 69.90	BD129	Creative Threads IV	\$ 59.90	
BD113	Artisano	\$ 79.90	BD130	Creative Threads IV	\$ 59.90	
BD114	Artisano	\$ 79.90	BD131	Creative Threads IV	\$ 74.90	
BD115	Artisano	\$ 69.90	BD132	Creative Threads IV	\$ 74.90	
BD116	Artisano	\$ 79.90	BD133	Creative Threads V	\$ 102.90	
BD117	Artisano	\$ 89.90	BD134	Creative Threads VI	\$ 62.90	
BD118	Creative Threads II	\$ 59.90	BD135	Creative Threads VII	\$ 62.90	

Five Pleat Styles Available 2 1/2 x's Fullness



Reverse Pleat



Soft Goblet



Tacked at Top



Three Prong Pleat



Two Prong Pleat**



Shirred
 1" heading & 1 1/2" pocket

Pleated or Shirred Features

- 5 pleats per width
- Lined with RM Designer Super Sateen - white or ivory
- Bottom Hem-4" double turned blind stitched
- Side Hem-1 1/2" double turned blind stitched
- Matched thread
- Pin setting up to 1 3/4"
- Cloth covered weights in hem corners
- 1 width pleats to approximately 20"
- ** 2 Prong Pleats have 1 width pleats to approximately 24 inches and has 6 pleats per width

no other discounts apply



Grommet Top Standard Features

- 8 grommets per width
- Lined with RM Designer Super Sateen - white or ivory
- Heading-4" turned with crinoline
- Bottom Hem-4" double turned blind stitched
- Side Hem-1 1/2" double turned blind stitched
- Matched thread
- Cloth covered weights in hem corners

no other discounts apply

Pleated or Shirred Ordering Information Required

- Fabric
- Fabric Color
- RM Designer Super Sateen - white or ivory
- Quantity of Panels or Pairs
- Widths per Panel or Pair
- Finished Length
- Pin Setting
- Pleat Style
- Interlined or Blackout Lined: Add on

Grommet Top Ordering Information Required

- Fabric
- Fabric Color
- RM Designer Super Sateen - white or ivory
- Quantity of Panels or Pairs
- Widths per Panel or Pair
- Finished Length (from top of panel)
- Grommet Size
- Grommet Color
- Interlined or Blackout Lined: Add on

Grommet Sizes

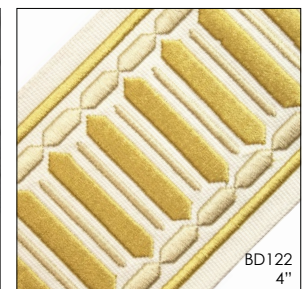
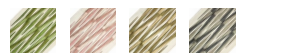
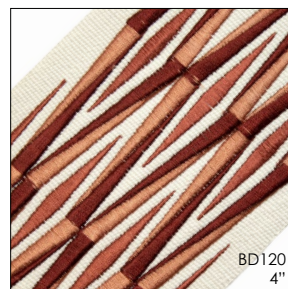
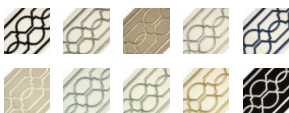
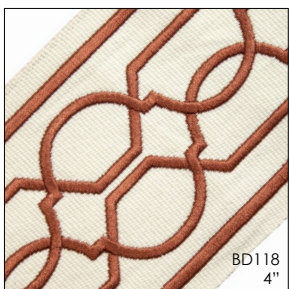
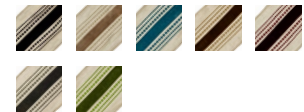
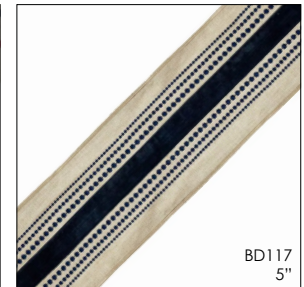
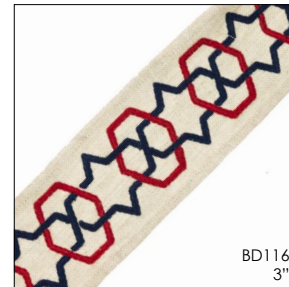
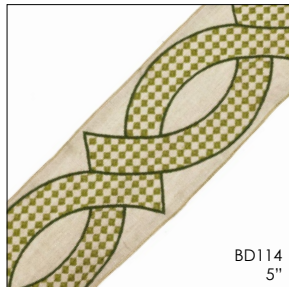
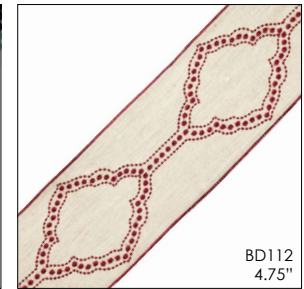
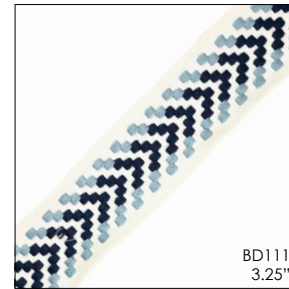
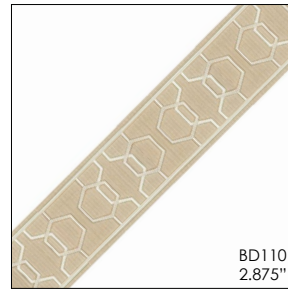
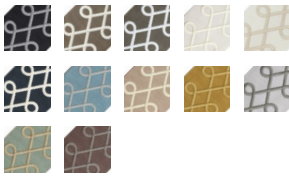
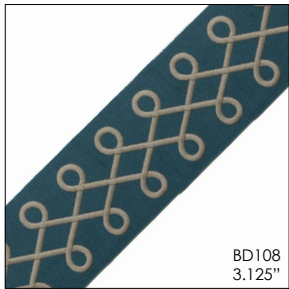
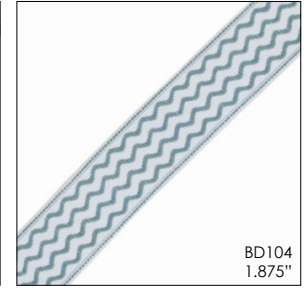
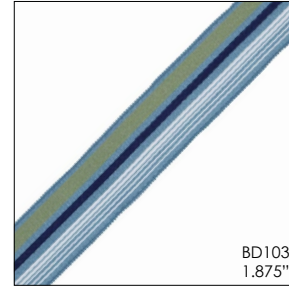
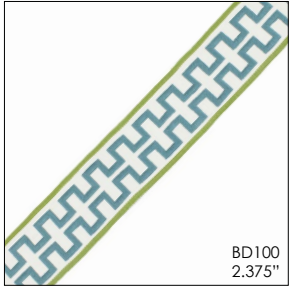
- Inside diameter of opening
- 3/4"
 - 1 1/8"
 - 1 7/16"
 - 1 9/16"

Grommet Colors

- Antique Brass
- Antique Copper
- Brass
- Black
- Matte Nickel
- Nickel
- Oil Rubbed Bronze - 1 9/16" only
- Satin Smoke

ELIGIBLE PANEL PROGRAM TRIM

Suggested Retail Pricing | No Other Discounts Apply



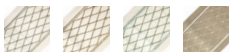
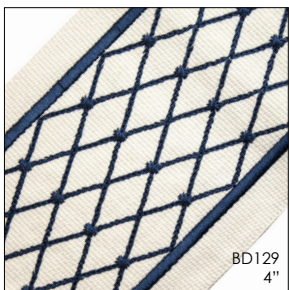
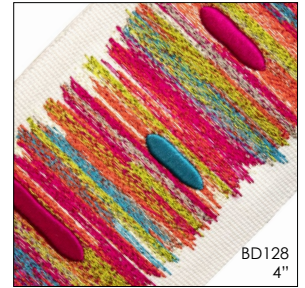
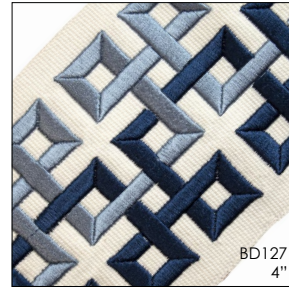
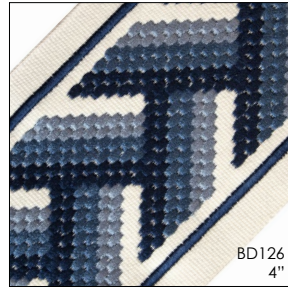
TO ORDER:

AVAILABLE ONLINE AT RMCOCO.COM

800.325.8025 OPTION 1 | FAX: 800.501.6810 | EMAIL: CUSTOMCREATIONS@RMCOCO.COM

ELIGIBLE PANEL PROGRAM TRIM

Suggested Retail Pricing | No Other Discounts Apply



TO ORDER:
AVAILABLE ONLINE AT RMCOCO.COM
800.325.8025 OPTION 1 | FAX: 800.501.6810 | EMAIL: CUSTOMCREATIONS@RMCOCO.COM

VIEW OUR ENTIRE TRIM COLLECTION