



PANEL PROGRAM PRICELIST

Effective February 14, 2022

Prices are subject to change without notice.
Visit <https://rmcoco.com/customer-resources/> for latest pricelists.



CUSTOM PANEL PROGRAM

Suggested Retail Pricing | No Other Discounts Apply | February 2022

			Finished Length to 90"				Finished Length to 124"				Finished Length to 150"			
			1 Width Panel	2 Width Panel	*3 Width Pair Only	*4 Width Pair Only	1 Width Panel	2 Width Panel	*3 Width Pair Only	*4 Width Pair Only	1 Width Panel	2 Width Panel	*3 Width Pair Only	*4 Width Pair Only
Linen Blends & Textures	Barrister	80% Polyester, 20% Linen Herringbone Solid	\$182	\$364	\$547	\$729	\$240	\$480	\$720	\$960	\$340	\$680	\$1,020	\$1,361
	Bruges	100% Linen Medium Weight Linen	\$267	\$534	\$801	\$1,068	\$335	\$671	\$1,006	\$1,342	\$447	\$894	\$1,341	\$1,789
	Harbor Club	80% Polyester, 20% Linen Slubbed Linen Blend Texture	\$168	\$336	\$503	\$671	\$221	\$442	\$663	\$884	\$317	\$635	\$952	\$1,269
	Harlow	85% Polyester, 15% Linen Casual Linen Blend Texture	\$177	\$355	\$532	\$710	\$234	\$467	\$701	\$935	\$333	\$665	\$998	\$1,330
	Landen	95% Polyester, 5% Linen Casual Linen Blend Texture	\$182	\$364	\$547	\$729	\$240	\$480	\$720	\$960	\$340	\$680	\$1,020	\$1,361
	Monte Carlo	100% Polyester Casual Linen Blend Texture	\$163	\$326	\$489	\$652	\$214	\$429	\$643	\$858	\$310	\$619	\$929	\$1,239
	Saint Tropez	100% Polyester Faux Linen Solid	\$168	\$336	\$503	\$671	\$221	\$442	\$663	\$884	\$317	\$635	\$952	\$1,269
	Smart Move	100% Polyester Pearlescent Solid Texture	\$175	\$350	\$525	\$700	\$230	\$461	\$691	\$922	\$329	\$657	\$986	\$1,315
	Stonebriar	100% Polyester Casual Textured Solid	\$168	\$336	\$503	\$671	\$221	\$442	\$663	\$884	\$317	\$635	\$952	\$1,269
	Strata	76% Viscose, 24% Linen Vertical Strié Texture	\$227	\$453	\$680	\$907	\$299	\$599	\$898	\$1,197	\$405	\$810	\$1,214	\$1,619
Chenilles, Velvets, & Plush Textures	Sutton	100% Polyester Faux Linen Twill	\$168	\$336	\$503	\$671	\$221	\$442	\$663	\$884	\$317	\$635	\$952	\$1,269
	Ascot	90% Polyester, 10% Nylon Pebbled Textured Chenille	\$168	\$336	\$503	\$671	\$221	\$442	\$663	\$884	\$317	\$635	\$952	\$1,269
	Bronco	100% Polyester Multi Colored Textured Chenille	\$158	\$316	\$475	\$633	\$208	\$416	\$624	\$832	\$302	\$604	\$906	\$1,209
	Cortland	85% Polyester, 15% Rayon Cross Hatched Chenille	\$180	\$360	\$539	\$719	\$237	\$474	\$711	\$948	\$336	\$673	\$1,009	\$1,345
	Penthouse	51% Viscose, 29% Polyester Textured Chenille Solid	\$192	\$384	\$575	\$767	\$253	\$506	\$759	\$1,012	\$355	\$711	\$1,066	\$1,421
	Plush	100% Polyester Chenille Textured Solid	\$168	\$336	\$503	\$671	\$221	\$442	\$663	\$884	\$317	\$635	\$952	\$1,269
	Rialto	100% Polyester Strié Faille Chenille	\$168	\$336	\$503	\$671	\$221	\$442	\$663	\$884	\$317	\$635	\$952	\$1,269
	San Moritz	100% Polyester Distressed Chenille Texture	\$204	\$408	\$611	\$815	\$269	\$538	\$807	\$1,076	\$374	\$749	\$1,123	\$1,497
	Villa	100% Polyester Plush Velvet Solid	\$178	\$357	\$535	\$714	\$227	\$453	\$680	\$907	\$326	\$652	\$977	\$1,303
	Wellington	95% Polyester, 5% Nylon Low Pile Chenille Solid	\$168	\$336	\$503	\$671	\$221	\$442	\$663	\$884	\$317	\$635	\$952	\$1,269
	Westover	100% Polyester Antiqued Chenille Solid	\$201	\$403	\$604	\$806	\$266	\$531	\$797	\$1,063	\$371	\$741	\$1,112	\$1,482



CUSTOM PANEL PROGRAM

Suggested Retail Pricing | No Other Discounts Apply | February 2022

			Finished Length to 90"				Finished Length to 124"				Finished Length to 150"				
			1 Width Panel	2 Width Panel	*3 Width Pair Only	*4 Width Pair Only	1 Width Panel	2 Width Panel	*3 Width Pair Only	*4 Width Pair Only	1 Width Panel	2 Width Panel	*3 Width Pair Only	*4 Width Pair Only	
Classic Drapery Fabric	Organic Classics	Chimera	100% Polyester Faux Silk	\$180	\$360	\$539	\$719	\$237	\$474	\$711	\$948	\$336	\$673	\$1,009	\$1,345
		Contessa	100% Polyester Faux Silk Solid Texture	\$195	\$390	\$586	\$781	\$249	\$498	\$747	\$996	\$352	\$705	\$1,057	\$1,410
		Keepsakes	100% Polyester Transitional Drapery Texture	\$183	\$366	\$550	\$733	\$233	\$466	\$699	\$932	\$333	\$667	\$1,000	\$1,334
		Everest	65% Recycled Polyester 35% Organic Cotton Eco-Twill Solid	\$168	\$336	\$503	\$671	\$221	\$442	\$663	\$884	\$317	\$635	\$952	\$1,269
		Expedition	100% Cotton Organic Cotton Twill	\$168	\$336	\$503	\$671	\$221	\$442	\$663	\$884	\$317	\$635	\$952	\$1,269
		Sailaway	100% Cotton Organic Cotton Duck	\$168	\$336	\$503	\$671	\$221	\$442	\$663	\$884	\$317	\$635	\$952	\$1,269
		Perception	100% Silk Machine Loomed Silk	\$305	\$609	\$914	\$1,218	\$403	\$807	\$1,210	\$1,613	\$534	\$1,068	\$1,602	\$2,136
		Prelude	100% Polyester Transitional Drapery Texture	\$144	\$288	\$431	\$575	\$189	\$378	\$567	\$756	\$279	\$559	\$838	\$1,117
		RM Dupioni	100% Silk Hand Loomed Silk	\$269	\$537	\$806	\$1,074	\$355	\$711	\$1,066	\$1,421	\$477	\$954	\$1,431	\$1,908
		Trieste Twill	100% Cotton Casual Twill Solid	\$155	\$311	\$466	\$621	\$204	\$408	\$612	\$816	\$292	\$584	\$875	\$1,167
		Vail Suede	100% Polyester Lightweight Suede	\$151	\$302	\$453	\$604	\$198	\$397	\$595	\$794	\$291	\$581	\$872	\$1,163
Light Control Fabrics	Unlined Twilight Dimmers	Eventide	100% Polyester Unlined Dimmer Drapery Textures	\$193	\$386	\$579	\$772	\$255	\$509	\$764	\$1,018	\$357	\$715	\$1,072	\$1,429
		Illusion	100% Polyester Unlined Dimmer Drapery Textures	\$193	\$386	\$579	\$772	\$255	\$509	\$764	\$1,018	\$357	\$715	\$1,072	\$1,429
		Nightfall	100% Polyester Unlined Dimmer Drapery Textures	\$193	\$386	\$579	\$772	\$255	\$509	\$764	\$1,018	\$357	\$715	\$1,072	\$1,429
		Phantom	100% Polyester Unlined Dimmer Drapery Textures	\$193	\$386	\$579	\$772	\$255	\$509	\$764	\$1,018	\$357	\$715	\$1,072	\$1,429
		Stardust	100% Polyester Unlined Dimmer Drapery Textures	\$193	\$386	\$579	\$772	\$255	\$509	\$764	\$1,018	\$357	\$715	\$1,072	\$1,429
		Sunset	100% Polyester Unlined Dimmer Drapery Textures	\$193	\$386	\$579	\$772	\$255	\$509	\$764	\$1,018	\$357	\$715	\$1,072	\$1,429
		Twilight	100% Polyester Unlined Dimmer Drapery Textures	\$157	\$314	\$471	\$628	\$207	\$413	\$620	\$826	\$300	\$601	\$901	\$1,201
		Umbra	100% Polyester Unlined Dimmer Drapery Textures	\$193	\$386	\$579	\$772	\$255	\$509	\$764	\$1,018	\$357	\$715	\$1,072	\$1,429
		Vestige	100% Polyester Unlined Dimmer Drapery Textures	\$193	\$386	\$579	\$772	\$255	\$509	\$764	\$1,018	\$357	\$715	\$1,072	\$1,429
		Eventide	100% Polyester Lined Dimmer Drapery Textures	\$206	\$412	\$619	\$825	\$272	\$544	\$816	\$1,088	\$378	\$756	\$1,134	\$1,513
	Lined Twilight Dimmers	Illusion	100% Polyester Lined Dimmer Drapery Textures	\$206	\$412	\$619	\$825	\$272	\$544	\$816	\$1,088	\$378	\$756	\$1,134	\$1,513
		Nightfall	100% Polyester Lined Dimmer Drapery Textures	\$206	\$412	\$619	\$825	\$272	\$544	\$816	\$1,088	\$378	\$756	\$1,134	\$1,513
		Phantom	100% Polyester Lined Dimmer Drapery Textures	\$206	\$412	\$619	\$825	\$272	\$544	\$816	\$1,088	\$378	\$756	\$1,134	\$1,513
		Stardust	100% Polyester Lined Dimmer Drapery Textures	\$206	\$412	\$619	\$825	\$272	\$544	\$816	\$1,088	\$378	\$756	\$1,134	\$1,513
		Sunset	100% Polyester Lined Dimmer Drapery Textures	\$206	\$412	\$619	\$825	\$272	\$544	\$816	\$1,088	\$378	\$756	\$1,134	\$1,513
		Twilight	100% Polyester Lined Dimmer Drapery Textures	\$170	\$340	\$511	\$681	\$224	\$448	\$672	\$896	\$321	\$642	\$963	\$1,285
		Umbra	100% Polyester Lined Dimmer Drapery Textures	\$206	\$412	\$619	\$825	\$272	\$544	\$816	\$1,088	\$378	\$756	\$1,134	\$1,513
		Vestige	100% Polyester Lined Dimmer Drapery Textures	\$206	\$412	\$619	\$825	\$272	\$544	\$816	\$1,088	\$378	\$756	\$1,134	\$1,513



CUSTOM PANEL PROGRAM

Suggested Retail Pricing | No Other Discounts Apply | February 2022

Additional Options (add to panel price)	Finished Length to 90"				Finished Length to 124"				Finished Length to 150"			
	1 Width Panel	2 Width Panel	*3 Width Pair Only	*4 Width Pair Only	1 Width Panel	2 Width Panel	*3 Width Pair Only	*4 Width Pair Only	1 Width Panel	2 Width Panel	*3 Width Pair Only	*4 Width Pair Only
Grommet Top	\$89	\$179	\$268	\$357	\$89	\$179	\$268	\$357	\$89	\$179	\$268	\$357
Interlining or Blackout Lining	\$50	\$100	\$150	\$201	\$64	\$129	\$193	\$258	\$70	\$139	\$209	\$278

Trim on Leading Edges (add labor per vertical row and cost of trim to panel price)	Length to:	36"	48"	60"	72"	84"	96"	108"	120"	132"	144"	150"
	Labor per vertical row	\$27	\$41	\$47	\$54	\$68	\$75	\$81	\$95	\$109	\$122	\$129
	Yardage required	1.25	1.50	1.75	2.25	2.50	2.75	3.25	3.50	3.75	4.25	4.50

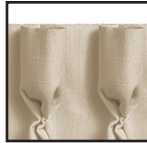
RM COCO trim selections only. Trim top stitched on vertical edge only, no horizontal application or inserted trim.

Trim Options (add labor per vertical row and cost of trim to panel price)	Pattern	Collection	Retail/Yard	Pattern	Collection	Retail/Yard
	BD111	Artisano	\$69.90	BD118	Creative Threads II	\$59.90
	BD112	Artisano	\$69.90	BD119	Creative Threads II	\$72.90
	BD113	Artisano	\$79.90	BD120	Creative Threads II	\$72.90
	BD114	Artisano	\$79.90	BD121	Creative Threads II	\$72.90
	BD115	Artisano	\$69.90	BD122	Creative Threads III	\$72.90
	BD116	Artisano	\$79.90	BD123	Creative Threads III	\$66.90
	BD117	Artisano	\$89.90	BD125	Creative Threads III	\$59.90
	BD100	Bahama Breeze	\$50.90	BD126	Creative Threads III	\$79.90
	BD101	Bahama Breeze	\$43.90	BD127	Creative Threads III	\$72.90
	BD102	Bahama Breeze	\$41.90	BD128	Creative Threads IV	\$85.90
	BD103	Bahama Breeze	\$25.90	BD129	Creative Threads IV	\$59.90
	BD104	Bahama Breeze	\$45.90	BD130	Creative Threads IV	\$59.90
	BD108	Creative Threads	\$94.90	BD131	Creative Threads IV	\$72.90
	BD109	Creative Threads	\$49.90	BD132	Creative Threads IV	\$72.90
	BD110	Creative Threads	\$94.90			

Five Pleat Styles Available 2 1/2 x's Fullness



Reverse Pleat



Soft Goblet



Tacked at Top



Three Prong Pleat



Two Prong Pleat**



Shirred
1" heading & 1 1/2" pocket

Pleated or Shirred Features

- 5 pleats per width
- Lined with RM Sateen white or ivory
- Bottom Hem-4" double turned blind stitched
- Side Hem-1 1/2" double turned blind stitched
- Matched thread
- Pin setting up to 1 3/4"
- Cloth covered weights in hem corners
- 1 width pleats to approximately 20"
- ** 2 Prong Pleats have 1 width pleats to approximately 24 inches and has 6 pleats per width

no other discounts apply



Grommet Top Standard Features

- 8 grommets per width
- Lined with RM Sateen white or ivory
- Heading-4" turned with crinoline
- Bottom Hem-4" double turned blind stitched
- Side Hem-1 1/2" double turned blind stitched
- Matched thread
- Cloth covered weights in hem corners

no other discounts apply

Pleated or Shirred Ordering Information Required

- Fabric
- Fabric Color
- RM Designer Super Sateen/ white or ivory
- Quantity of Panels or Pairs
- Widths per Panel or Pair
- Finished Length
- Pin Setting
- Pleat Style
- Interlined or Blackout Lined: Add on

Grommet Top Ordering Information Required

- Fabric
- Fabric Color
- Royal Sateen: White or Ivory
- Quantity of Panels or Pairs
- Widths per Panel or Pair
- Finished Length (from top of panel)
- Grommet Size
- Grommet Color
- Interlined or Blackout Lined: Add on

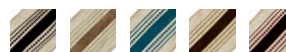
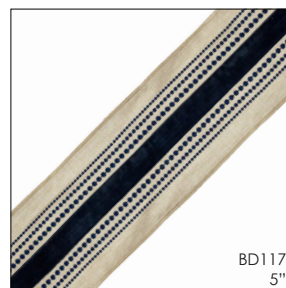
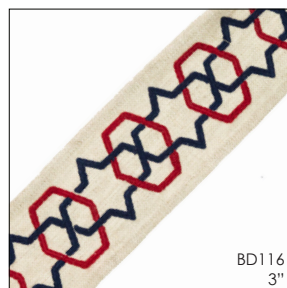
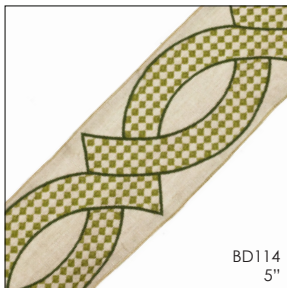
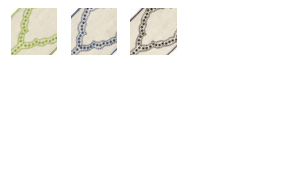
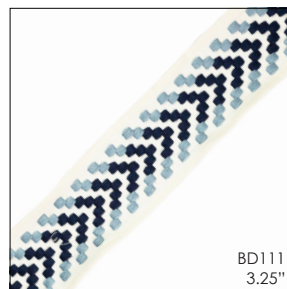
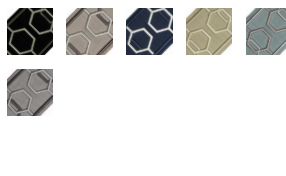
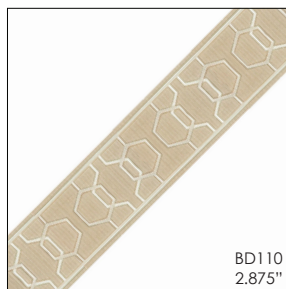
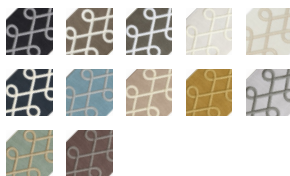
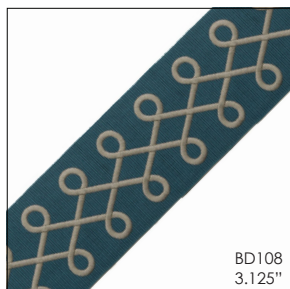
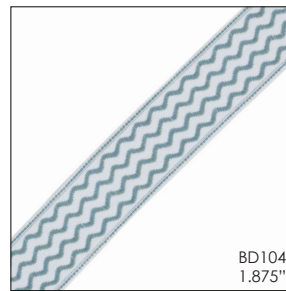
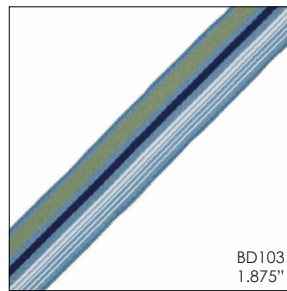
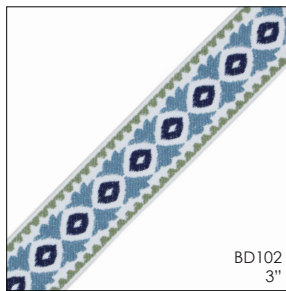
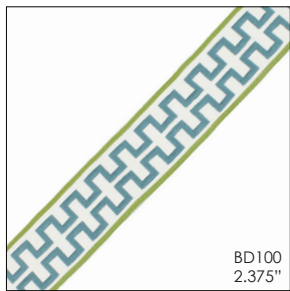
Grommet Sizes

- Inside diameter of opening
- 3/4"
- 1 1/8"
- 1 7/16"
- 1 9/16"

Grommet Colors

- Antique Brass
- Antique Copper
- Brass
- Black
- Matte Nickel
- Nickel
- Oil Rubbed Bronze - 1 9/16" only
- Satin Smoke

ELIGIBLE PANEL PROGRAM TRIM

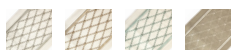
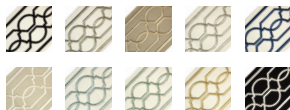
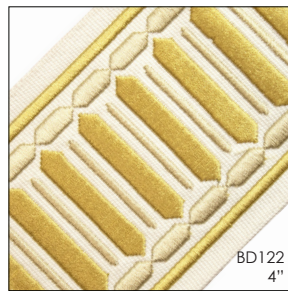
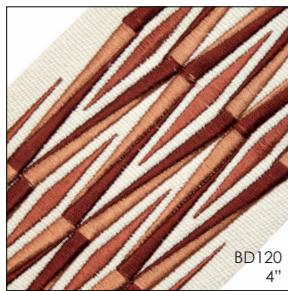
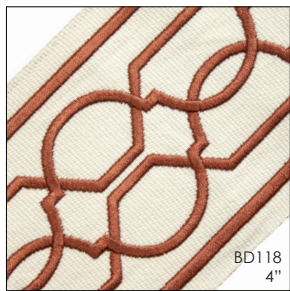


TO ORDER:

AVAILABLE ONLINE AT RMCOCO.COM

800.325.8025 OPTION 1 | FAX: 800.501.6810 | EMAIL: CUSTOMCREATIONS@RMCOCO.COM

ELIGIBLE PANEL PROGRAM TRIM



VIEW OUR ENTIRE
TRIM COLLECTION

TO ORDER:

AVAILABLE ONLINE AT RMCOCO.COM

800.325.8025 OPTION 1 | FAX: 800.501.6810 | EMAIL: CUSTOMCREATIONS@RMCOCO.COM